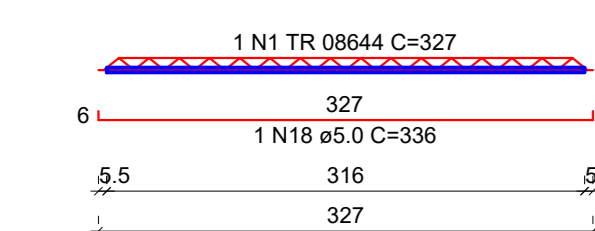


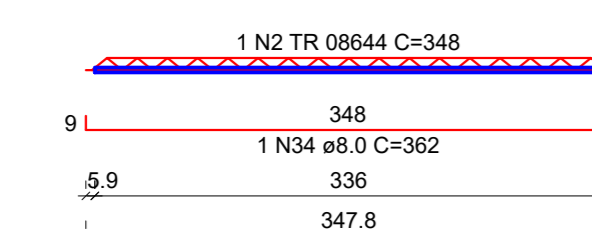
Planta de vigotas pré-moldadas

escala 1:50

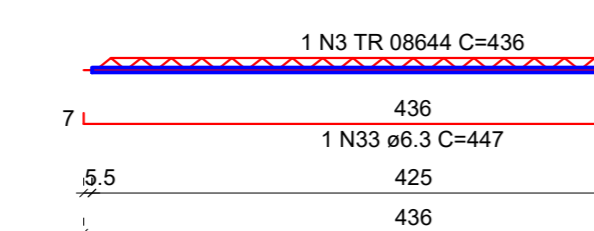
VT1a (13 unidades)



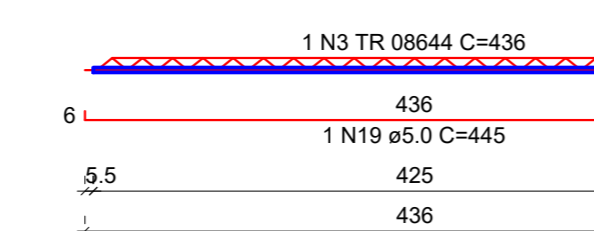
VT2a (14 unidades)



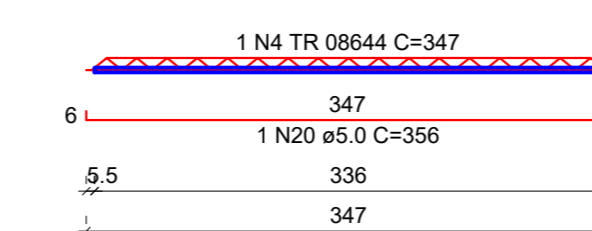
VT3a (12 unidades)



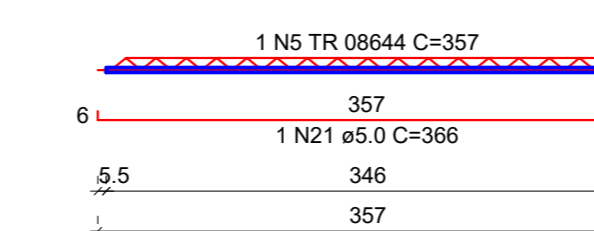
VT4a (12 unidades)



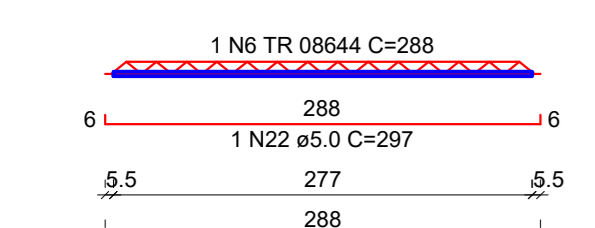
VT5a (12 unidades)



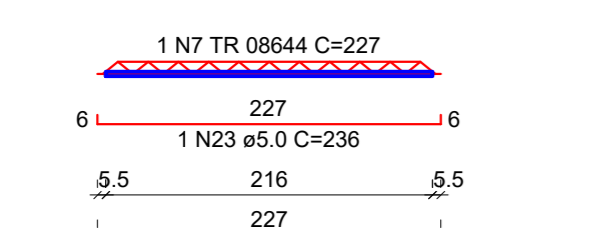
VT6a (12 unidades)



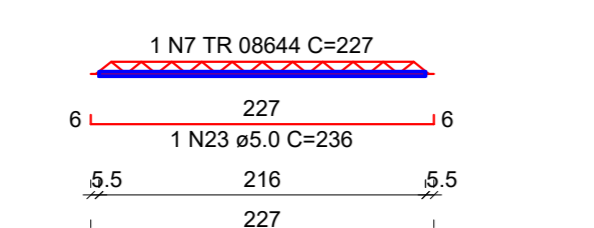
VT7a (12 unidades)



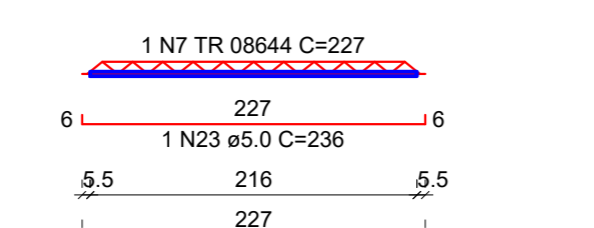
VT8a (8 unidades)



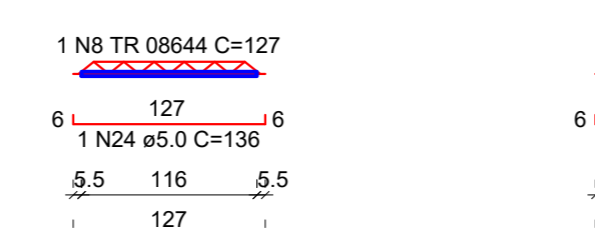
VT9a (8 unidades)



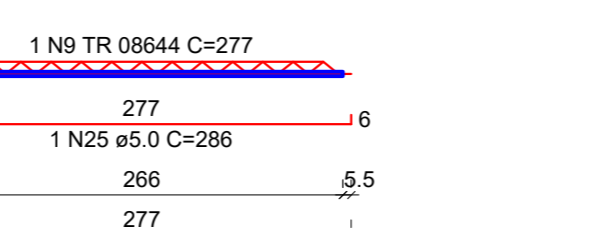
VT10a (8 unidades)



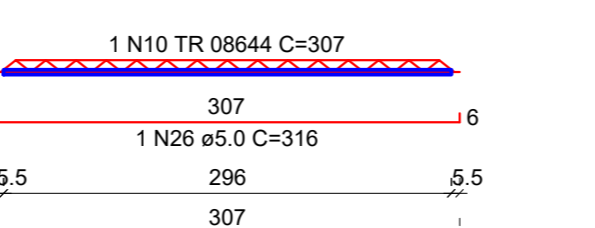
VT11a (8 unidades)



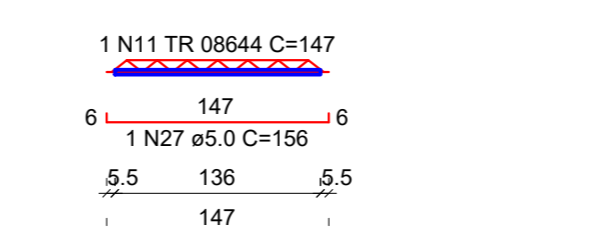
VT12a (13 unidades)



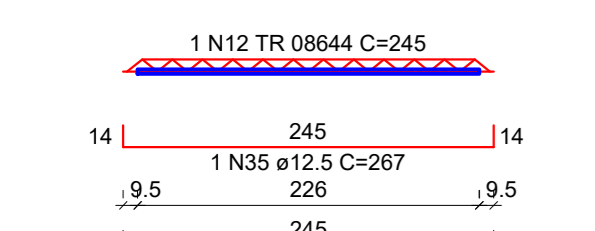
VT13a (15 unidades)



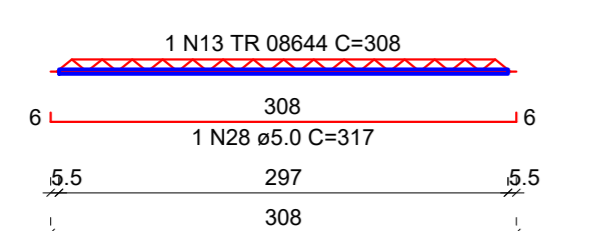
VT14a (21 unidades)



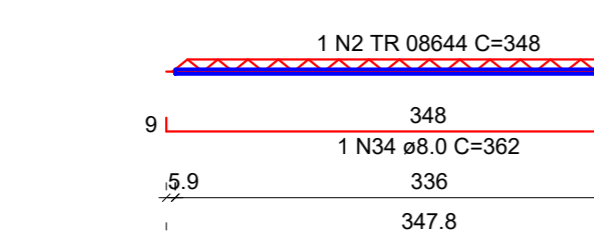
VT15a (41 unidades)



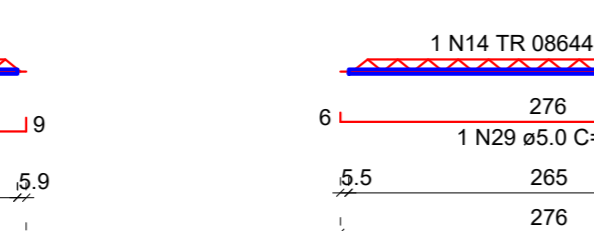
VT16a (13 unidades)



VT17a (9 unidades)



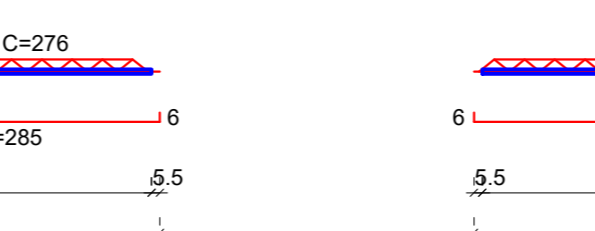
VT18a (11 unidades)



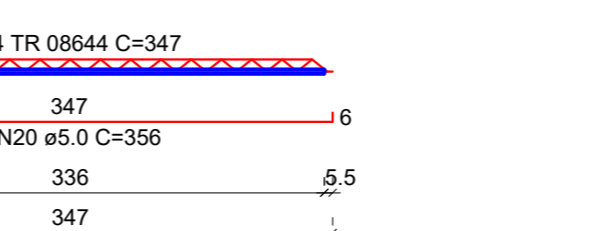
VT19a (11 unidades)



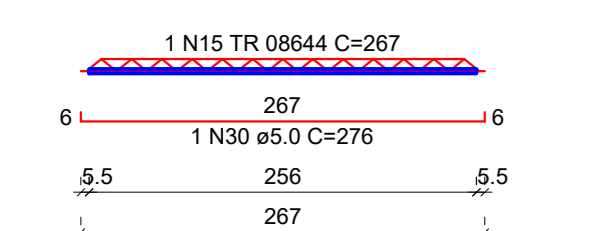
VT20a (11 unidades)



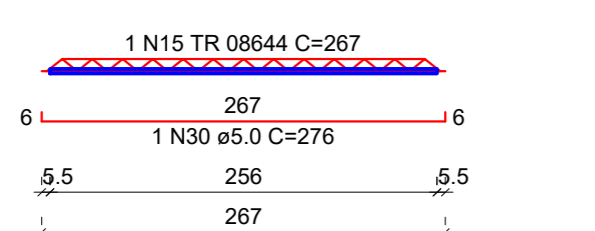
VT21a (9 unidades)



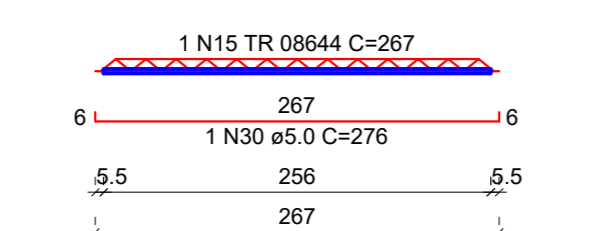
VT22a (9 unidades)



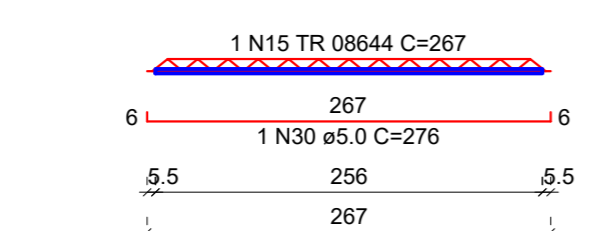
VT23a (9 unidades)



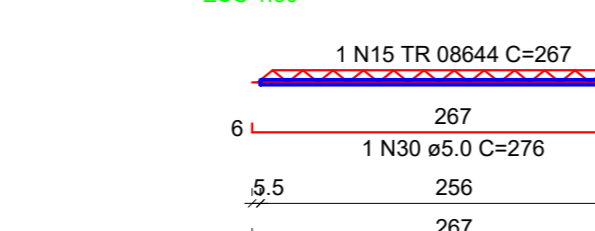
VT24a (9 unidades)



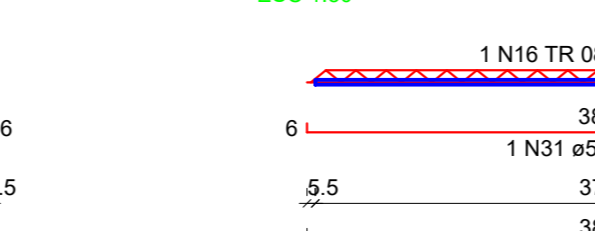
VT25a (9 unidades)



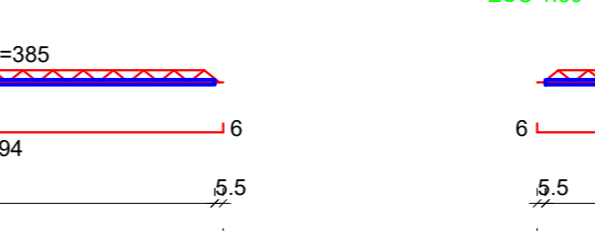
VT26a (9 unidades)



VT27a (13 unidades)



VT28a (13 unidades)



RELAÇÃO DO AÇO

AÇO	N	DIAM (mm)	QUANT	C.UNIT (cm)	C.TOTAL (cm)
CA60	1	TR 08644	13	327	4251
	2	TR 08644	23	346	8044
	3	TR 08644	24	436	10464
	4	TR 08644	32	347	11104
	5	TR 08644	12	357	4284
	6	TR 08644	12	288	3456
	7	TR 08644	24	227	5448
	8	TR 08644	8	127	1016
	9	TR 08644	13	277	3601
	10	TR 08644	15	307	4605
	11	TR 08644	21	147	3087
	12	TR 08644	41	245	10045
	13	TR 08644	13	308	4004
	14	TR 08644	22	276	6072
	15	TR 08644	45	267	12015
	16	TR 08644	13	385	5005
	17	TR 08644	13	348	4524
	18	5.0	13	336	4368
	19	5.0	12	445	5340
	20	5.0	32	356	11392
	21	5.0	12	366	4392
	22	5.0	12	297	3564
	23	5.0	24	236	5664
	24	5.0	8	136	1088
	25	5.0	13	286	3718
	26	5.0	15	316	4740
	27	5.0	21	156	3276
	28	5.0	45	276	12420
	29	5.0	22	265	5830
	30	5.0	45	276	12420
	31	5.0	13	394	5122
	32	5.0	13	357	4641
	33	6.3	12	447	5364
	34	8.0	23	362	8326
	35	12.5	41	267	10947

RESUMO DO AÇO

AÇO	DIAM (mm)	C. TOTAL (m)	PESO + 6% (kg)
CA50	6.3	53.6	13.1
	8.0	83.3	32.9
	12.5	109.5	105.5
CA60	5.0	801.2	123.5
TR 08644		1059.9	142.2
<b>PESO TOTAL (kg)</b>			
CA50			151.4
CA60			862.1
Volume de concreto (C-30) = 21.37 m³			
Área de forma = 0.00 m²			

**ESTRUTURAL**

Unidade Básica de Saúde Rachadel  
Município de Antônio Carlos  
Rua Nelson Olegário Schmitz, s/n - bairro Rachadel - Antônio Carlos/SC



QuatroD Engenharia LTDA - CNPJ 03.883.288/0001-01  
Rua Leopoldo Pinheiro de Oliveira, nº 149 - Fátima - Belo Horizonte - Minas Gerais - CEP 31290-000  
Telefone: (51) 3333-1111  
E-mail: contato@quatrod.com.br

Quem é o Engenheiro? - CREA 03.000.000/0001-01

Número	Descrição	Data
001	1ª Análise - Elaboração do Projeto	20/01/2023

Desenvolvido por: **Gian Mizuza - CREA SC 159024-4**  
Engenheiro Civil

EST 10/12  
Data: 20/01/2023  
Como indicado