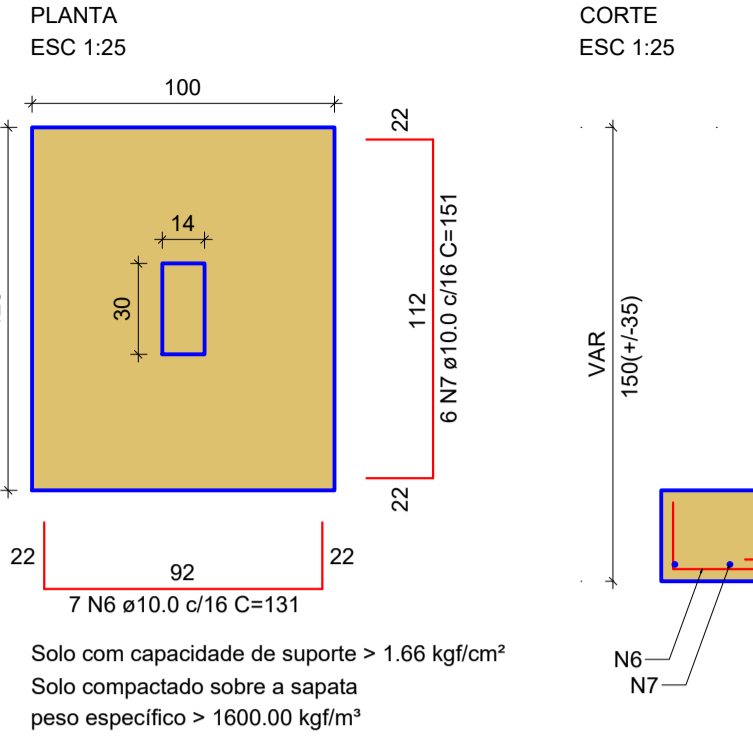
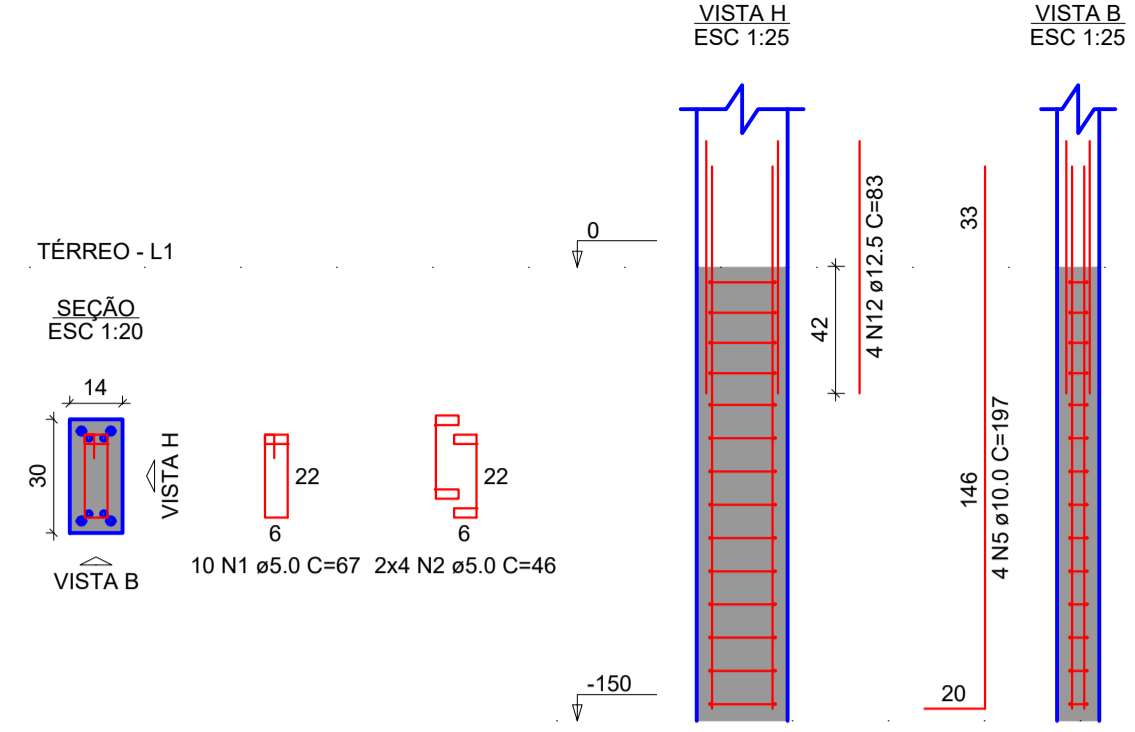


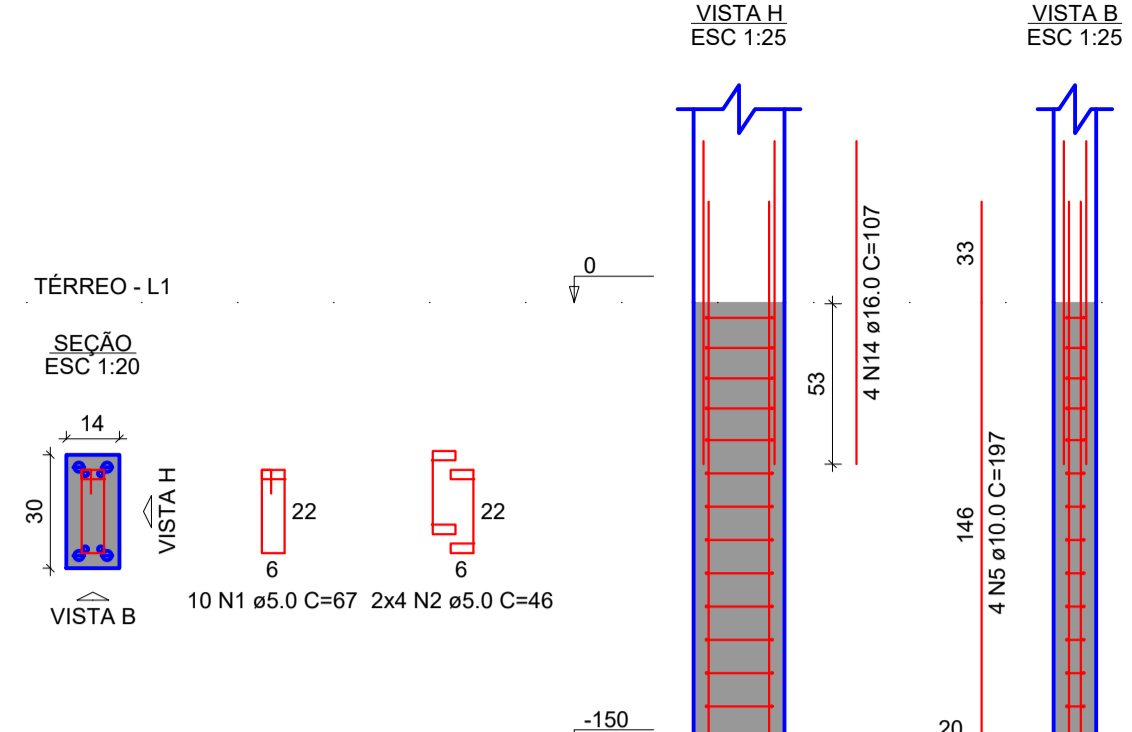
S1=S2=S6=S15=S17=S18=S20=S21=S23=S24
=S29=S30=S31=S35



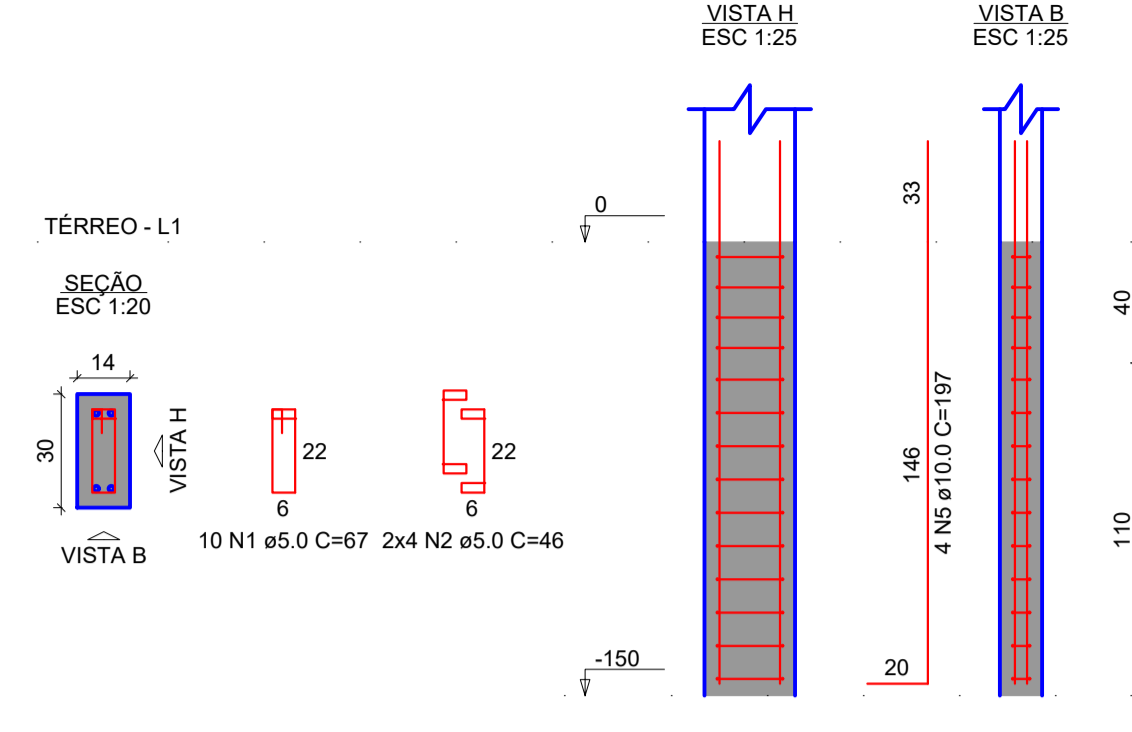
P1=P2=P15=P35



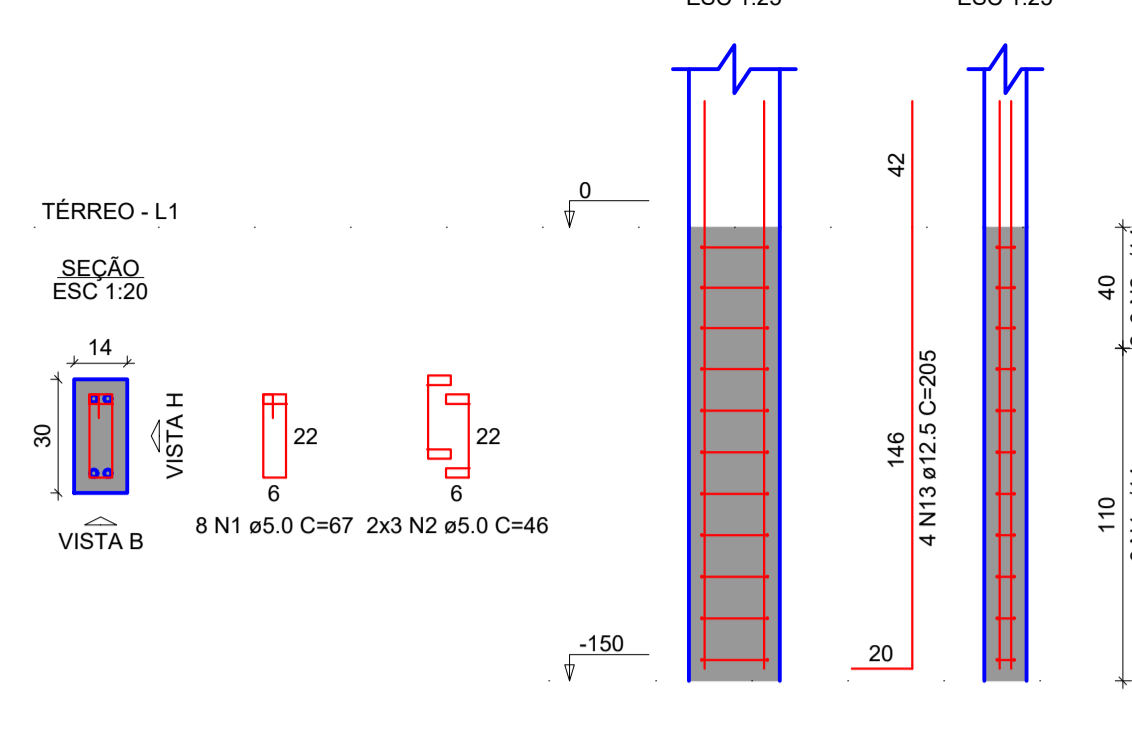
P6=P18=P20=P21



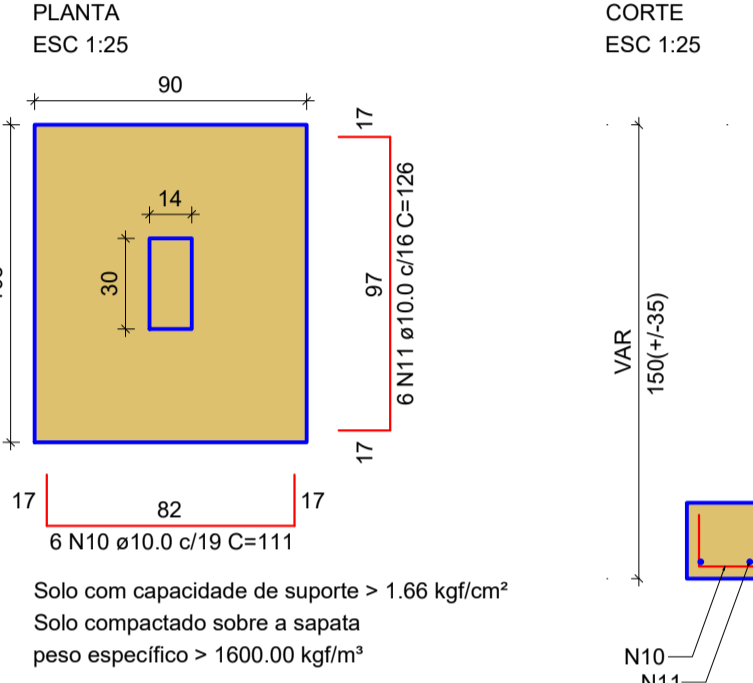
P17=P24=P29=P30=P31



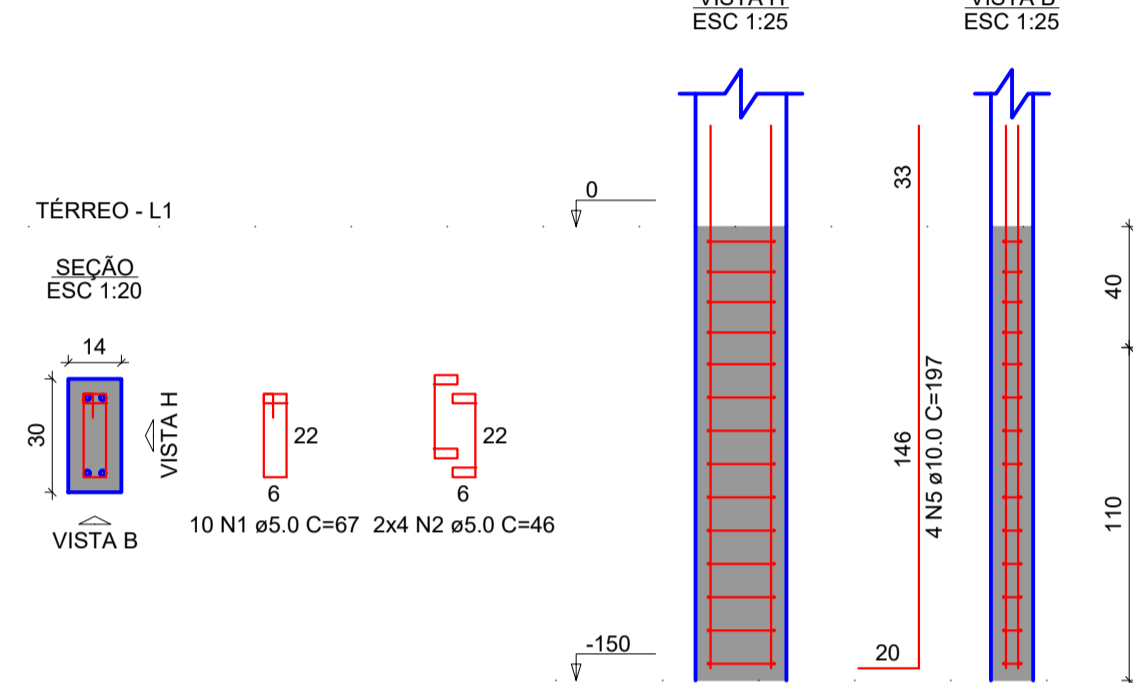
P23



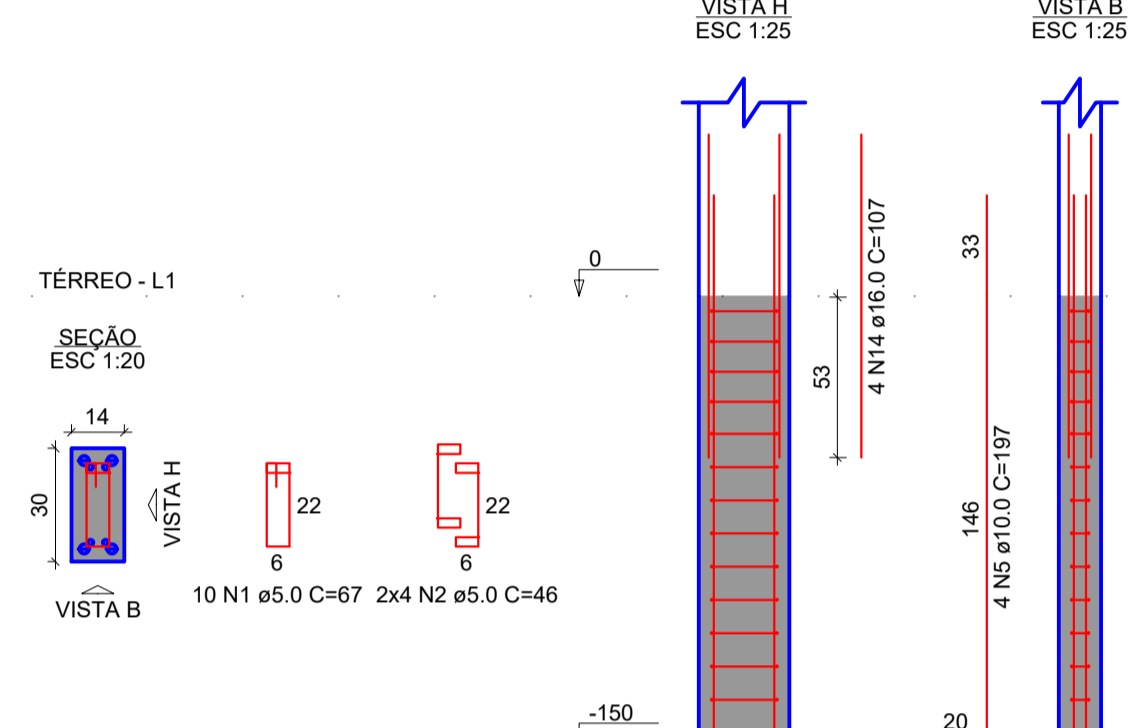
S3=S4=S5=S7=S8=S14=S16=S19=S22=S28=S32
=S33=S34=S41=S43



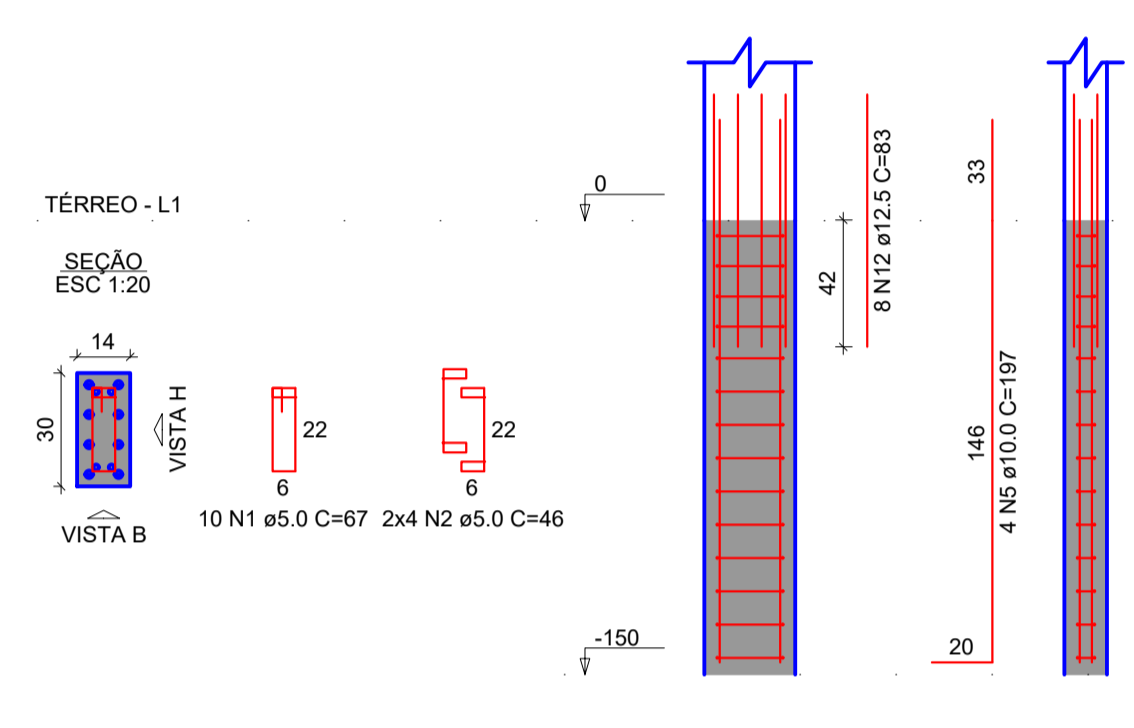
P3=P8=P14=P16=P22=P28=P32=P33=P34=
=P41



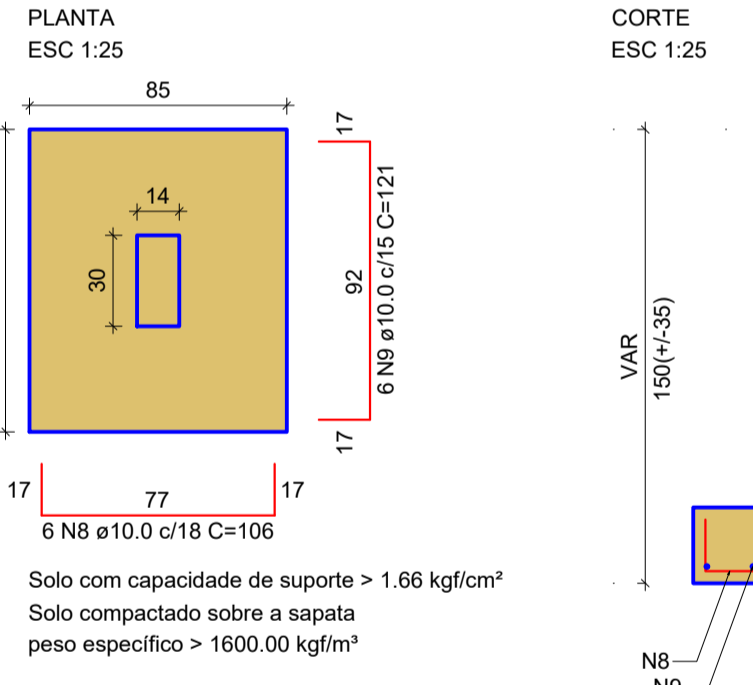
P4=P5=P19=P43



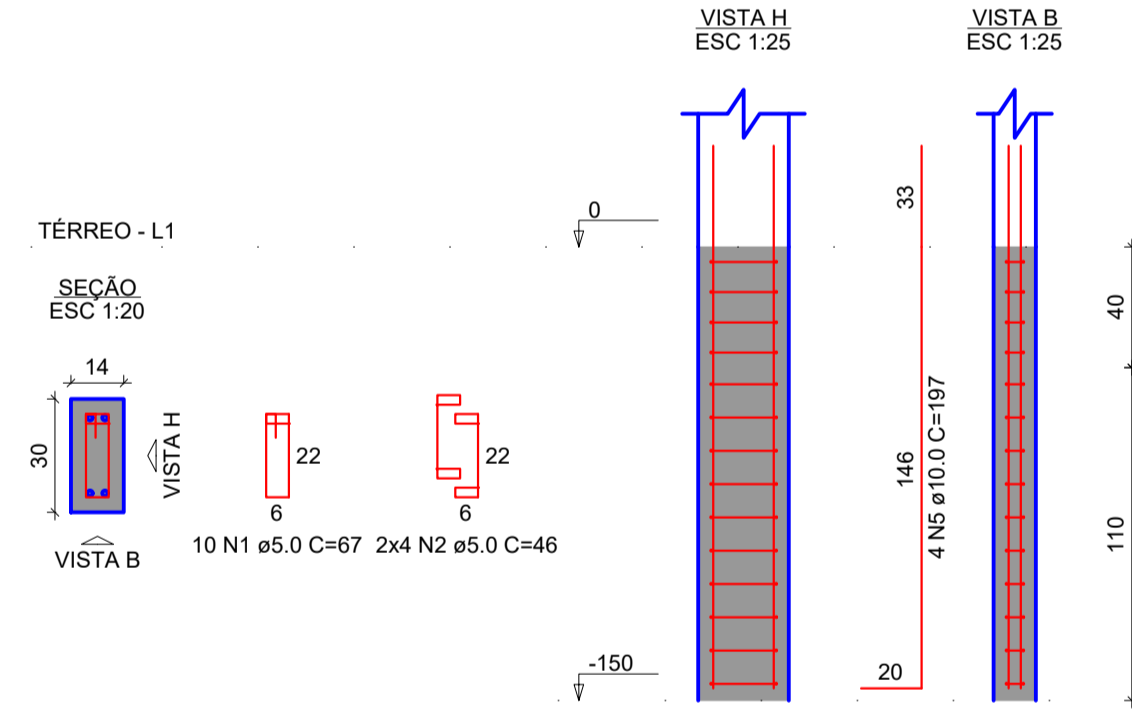
P7



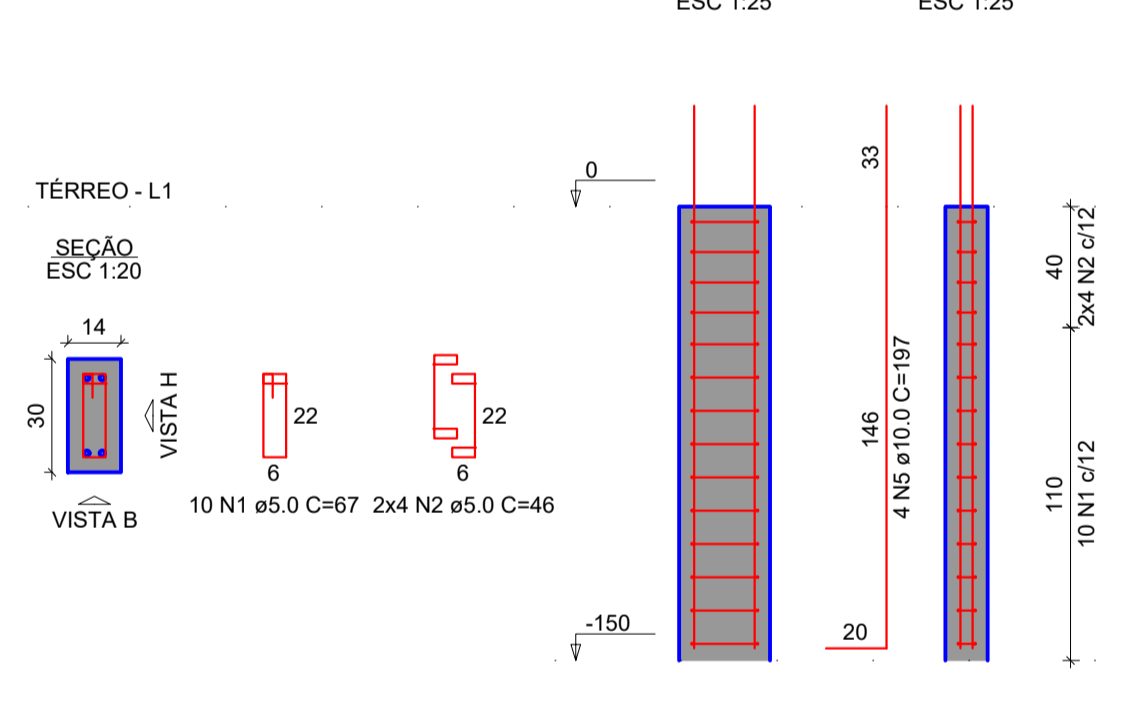
S9=S10=S11=S12=S13=S25=S26=S27=S36=S37
=S38=S39=S40=S42=S44



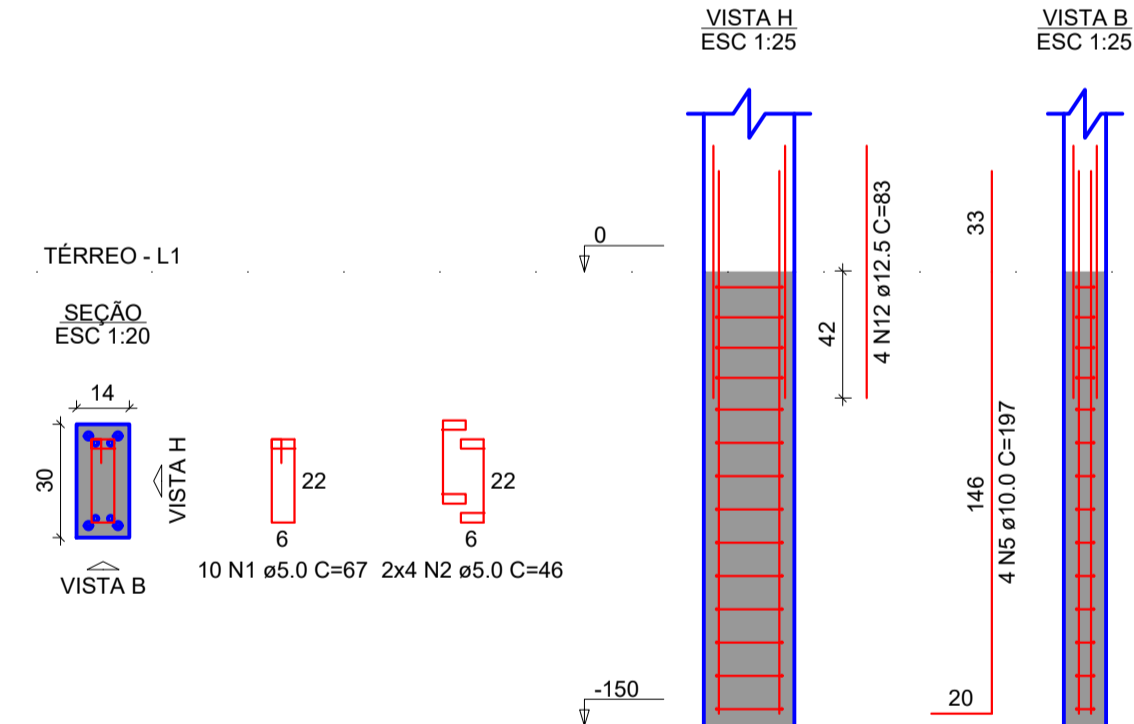
P9=P10=P11=P25=P40=P42



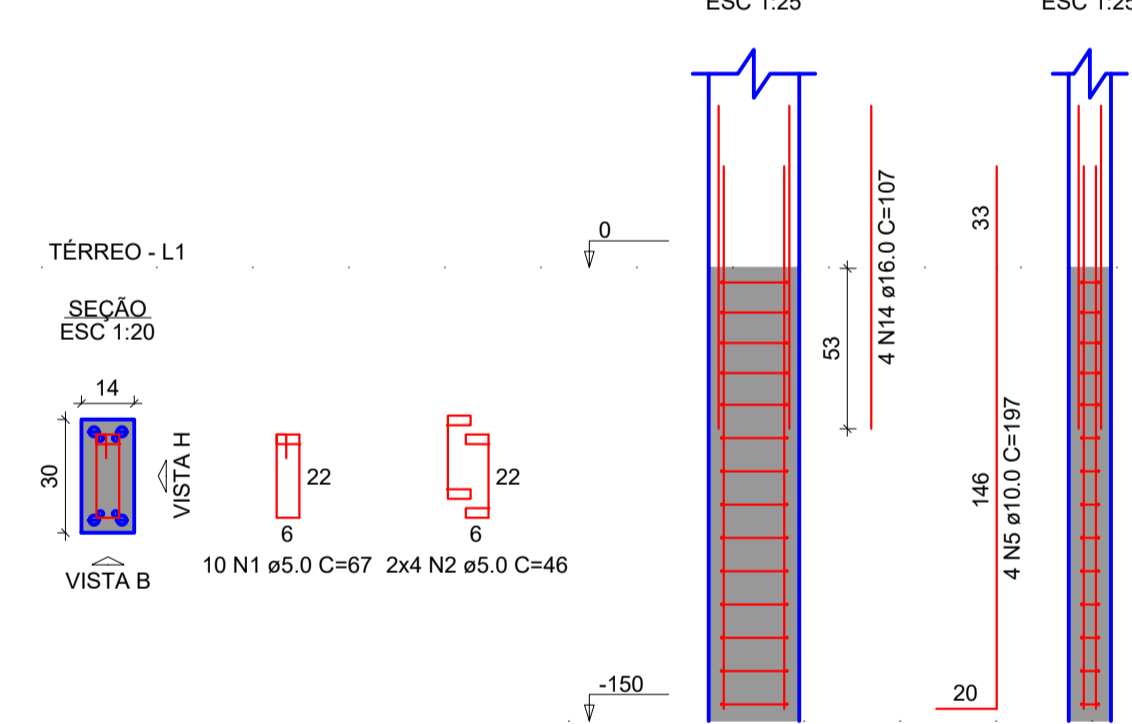
P12=P13



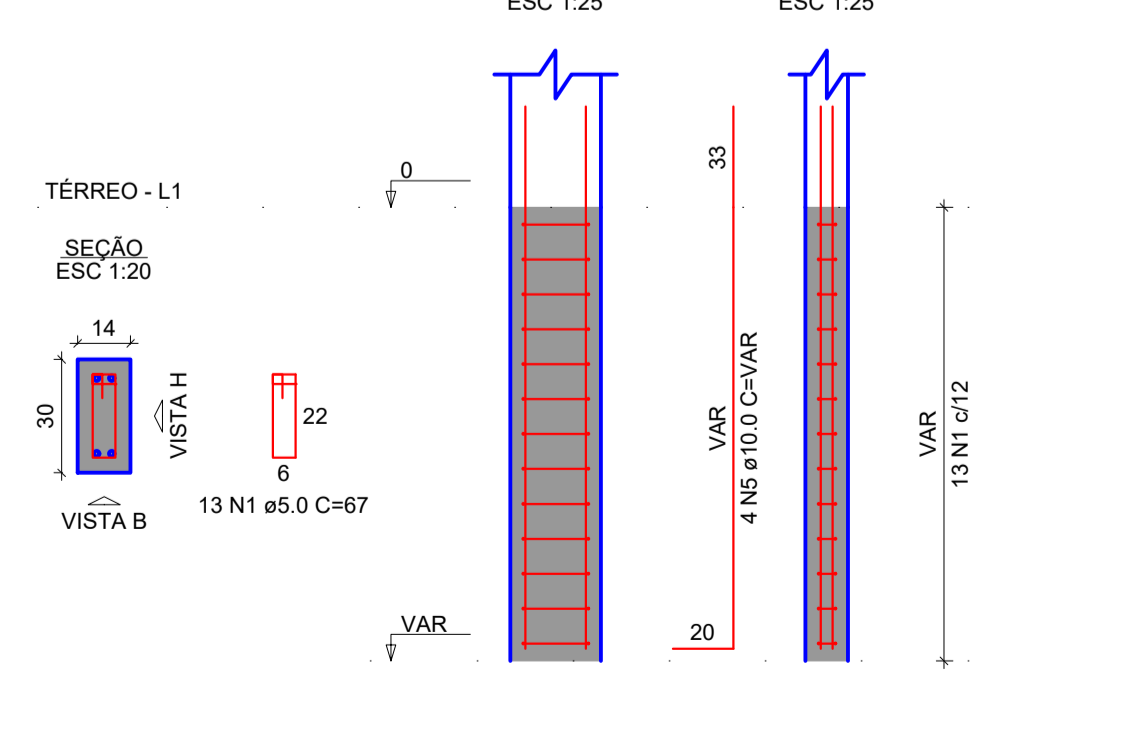
P26=P27=P36=P37=P38=P39



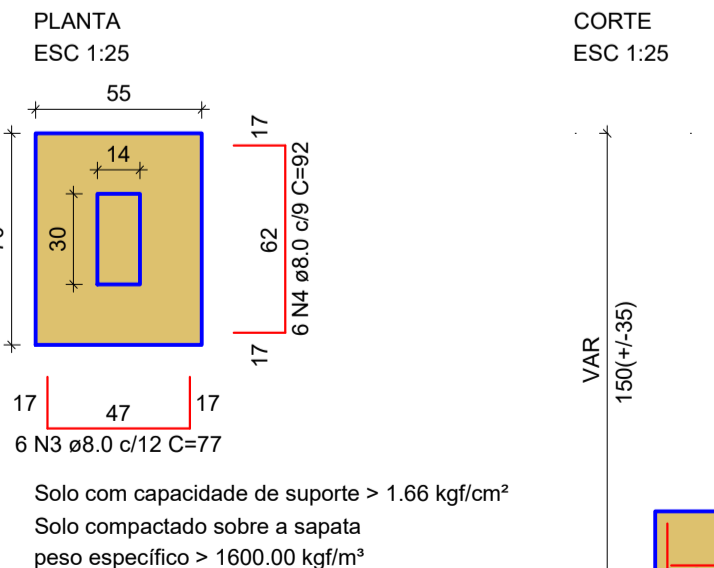
P44



P45=P46



S45=S46



RELAÇÃO DO AÇO

4xP1	10xP3	4xP4
4xP6	P7	6xP9
2xP12	5xP17	P23
8xP28	P44	2xP45
14xS1	15xS10	15xS16
2xS45		

AÇO	N	DIAM (mm)	QUANT	C.UNIT (cm)	C.TOTAL (cm)
CA60	1	5.0	464	67	31088
	2	5.0	350	46	16100
CA50	3	8.0	12	77	924
	4	8.0	12	92	1104
	5	10.0	180	197	35460
	6	10.0	98	131	12838
	7	10.0	84	151	12584
	8	10.0	90	106	9540
	9	10.0	90	121	10890
	10	10.0	90	111	9990
	11	10.0	90	126	11340
	12	12.5	48	83	3984
	13	12.5	4	205	820
	14	16.0	36	107	3852

RESUMO DO AÇO

AÇO	DIAM (mm)	C.TOTAL (m)	PESO + 0% (kg)
CA50	8.0	20.3	8
	10.0	1027.4	633.4
	12.5	48	46.3
CA60	5.0	38.5	60.8
	5.0	471.9	72.7
PESO TOTAL (kg)			
CA50		748.5	
CA60		72.7	

Volume de concreto (C-30) = 14.86 m³
Área de forma = 108.95 m²

OBSERVAÇÕES

- 1- Cota de apoio(base) das sapatas deverá ficar há 1m abaixo do terreno
- 1- Concreto utilizado sendo fck = 30 MPa

ESTRUTURAL

Assunto: Unidade Básica de Saúde Rachadel
Município de Antônio Carlos
Rua Nilton Olegário Schmitz, s/n - bairro Rachadel - Antônio Carlos/SC

Número	Descrição	Data
R00	1ª Análise - Elaboração do Projeto	20/01/2023

DETALHAMENTO DE SAPATAS

Desenhadas por: **Gian Minuzzo - CREA/SC 159024-4**
Engenheiro Civil
Data: **20/01/2023**
Escala: **Como indicado**

EST 03/12