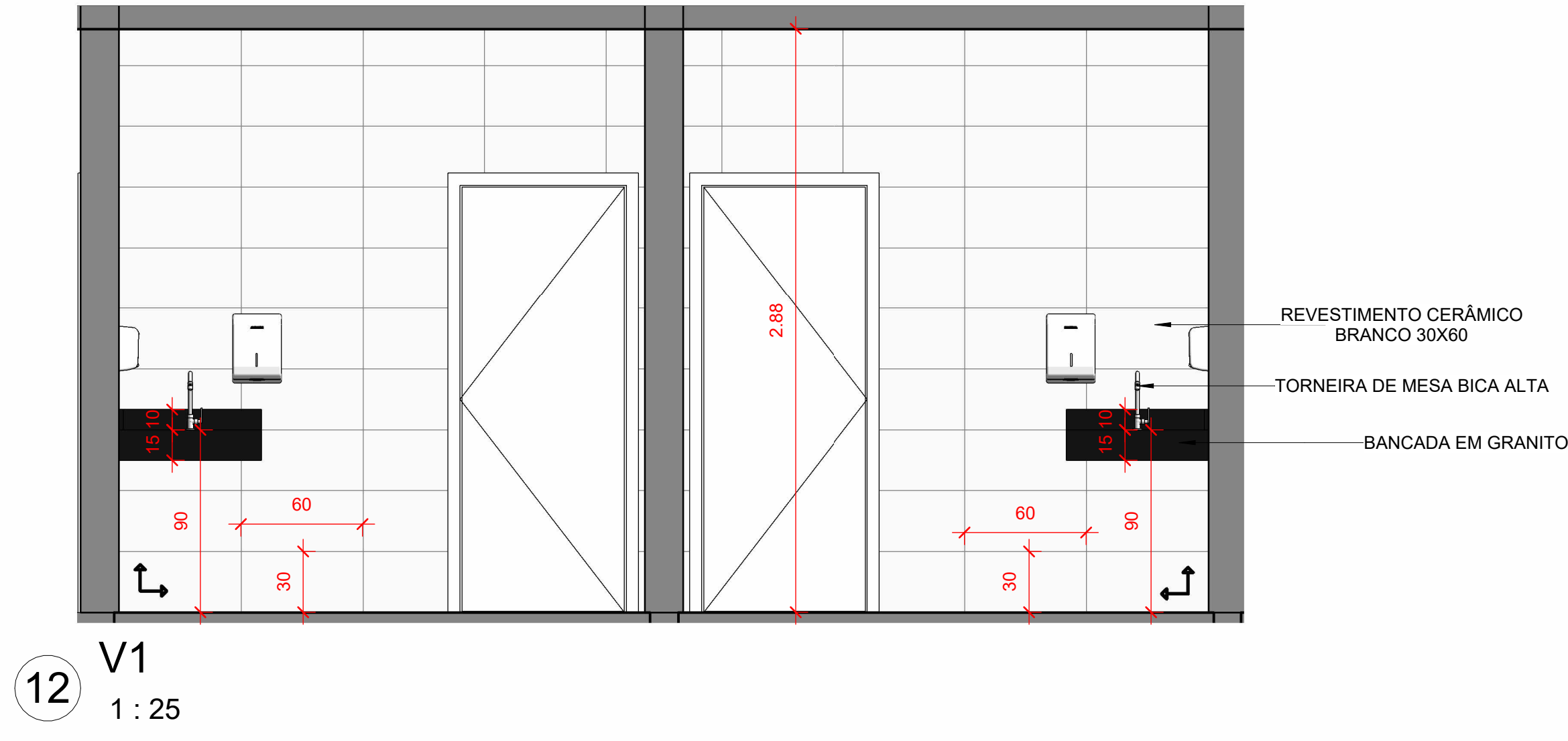
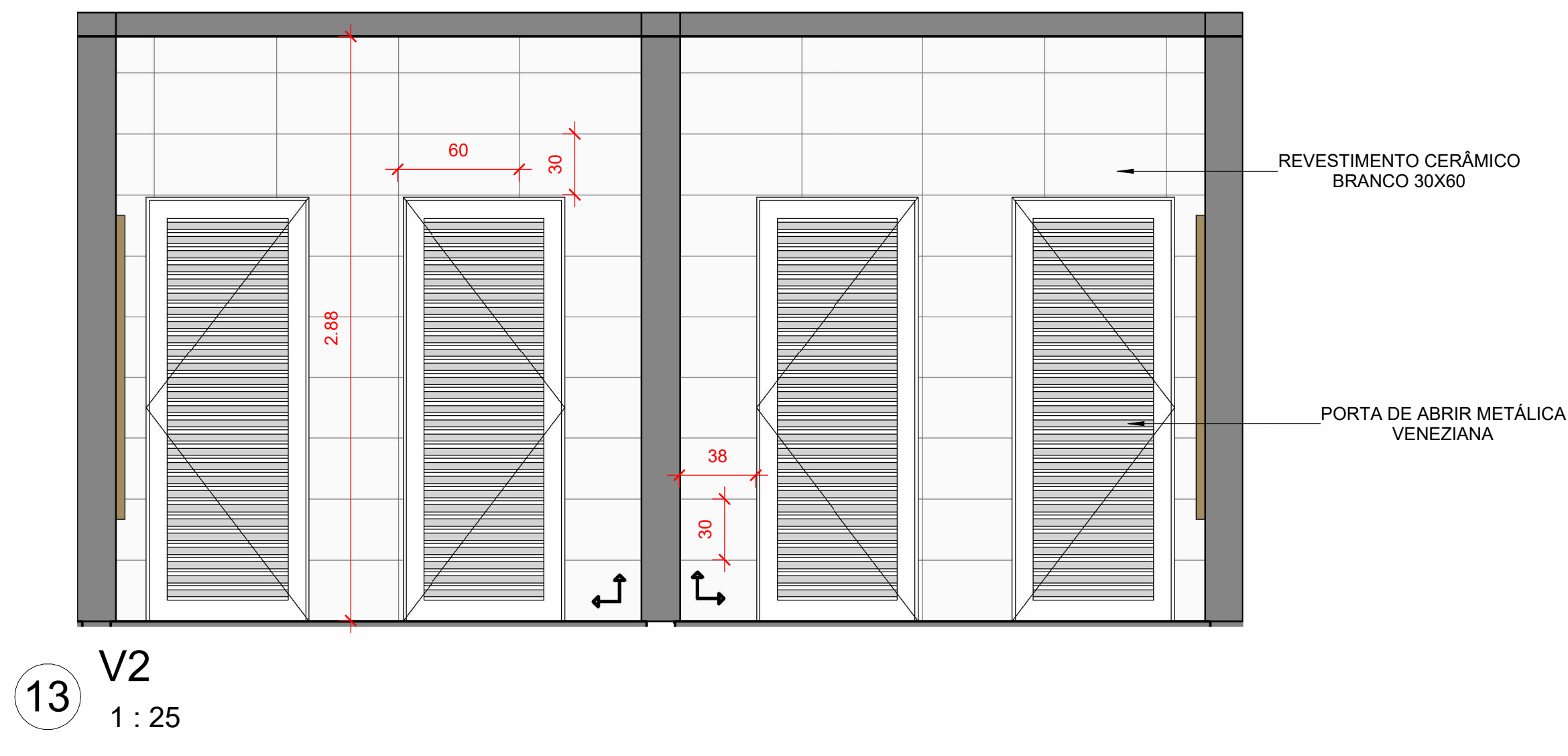


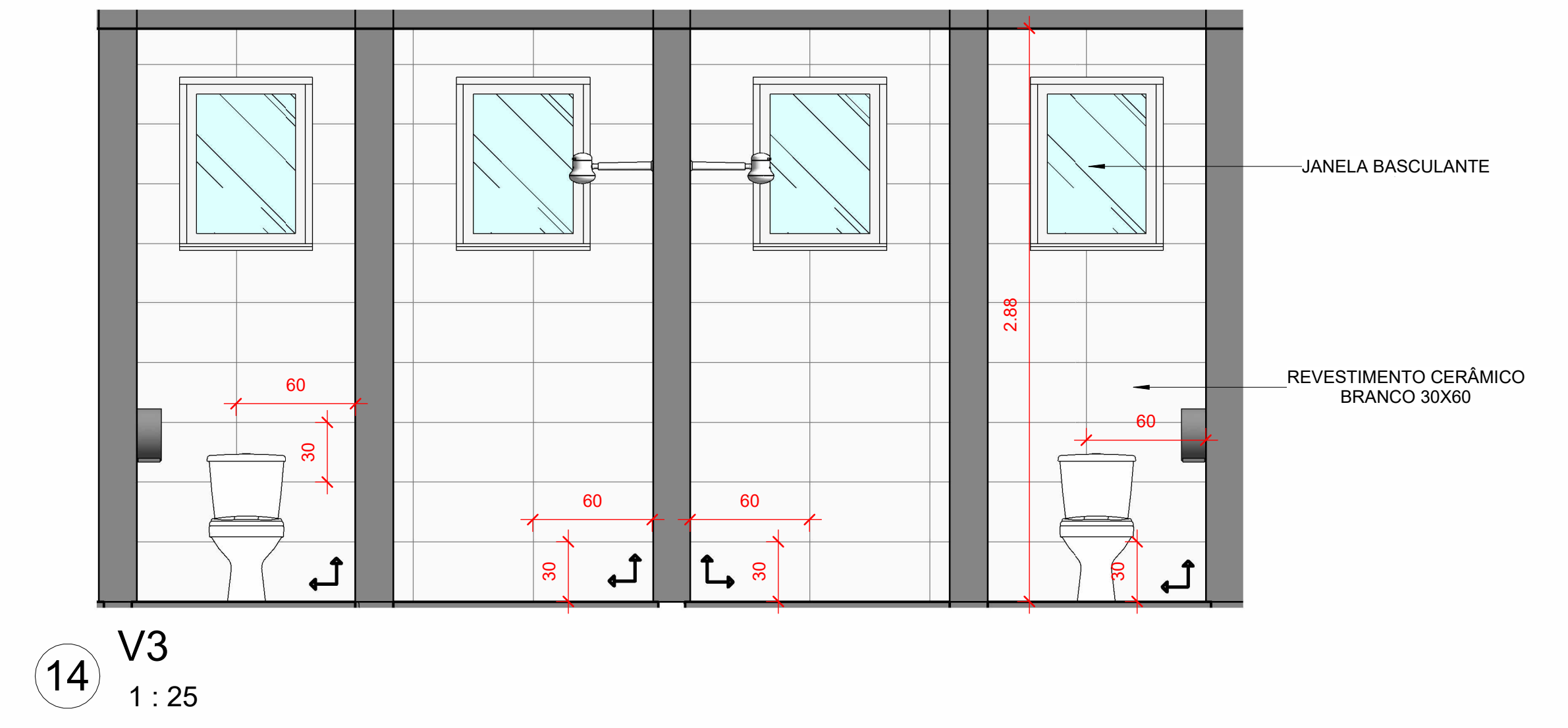
11 PLANTA BAIXA DETALHE VESTIBÁRIOS
1:25



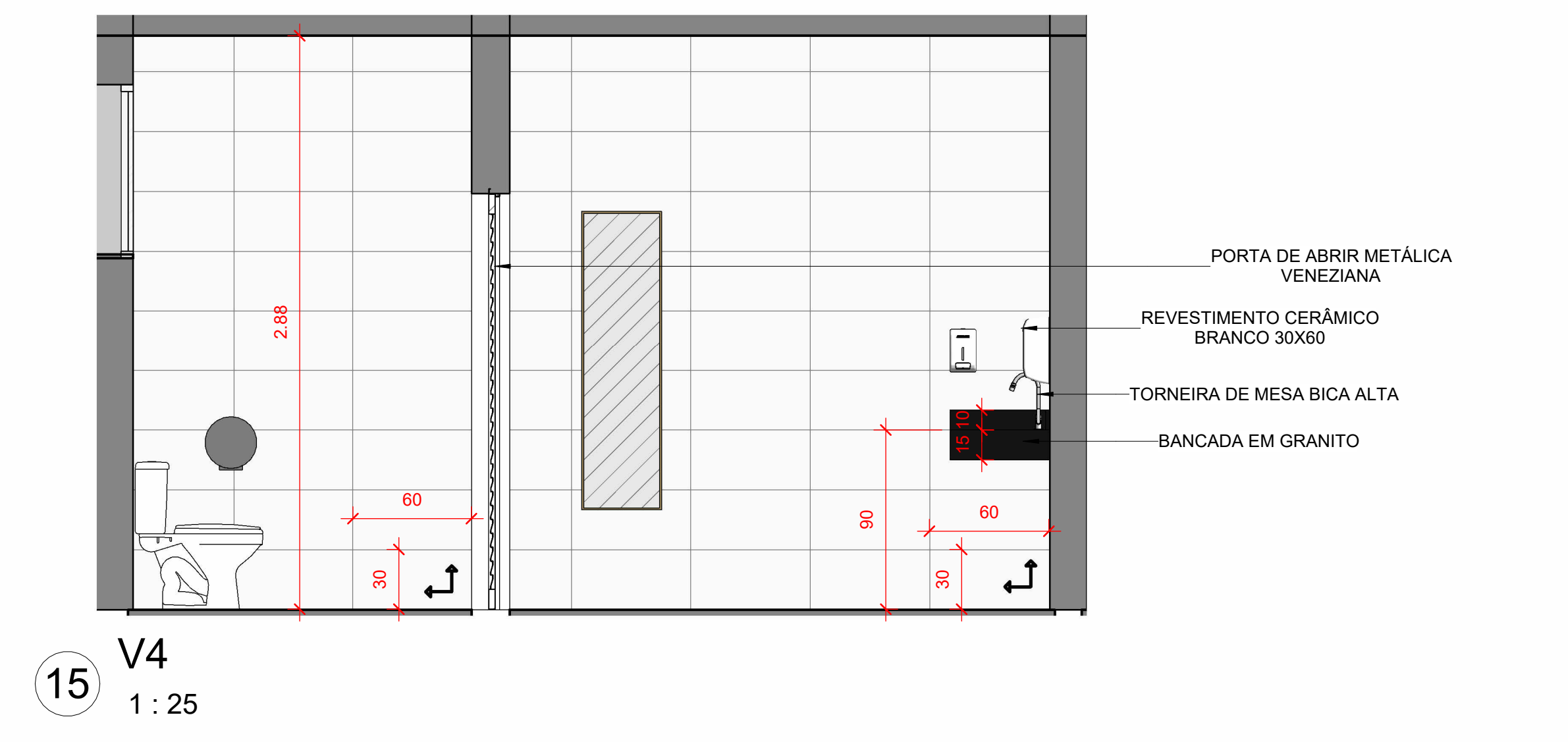
12 V1
1:25



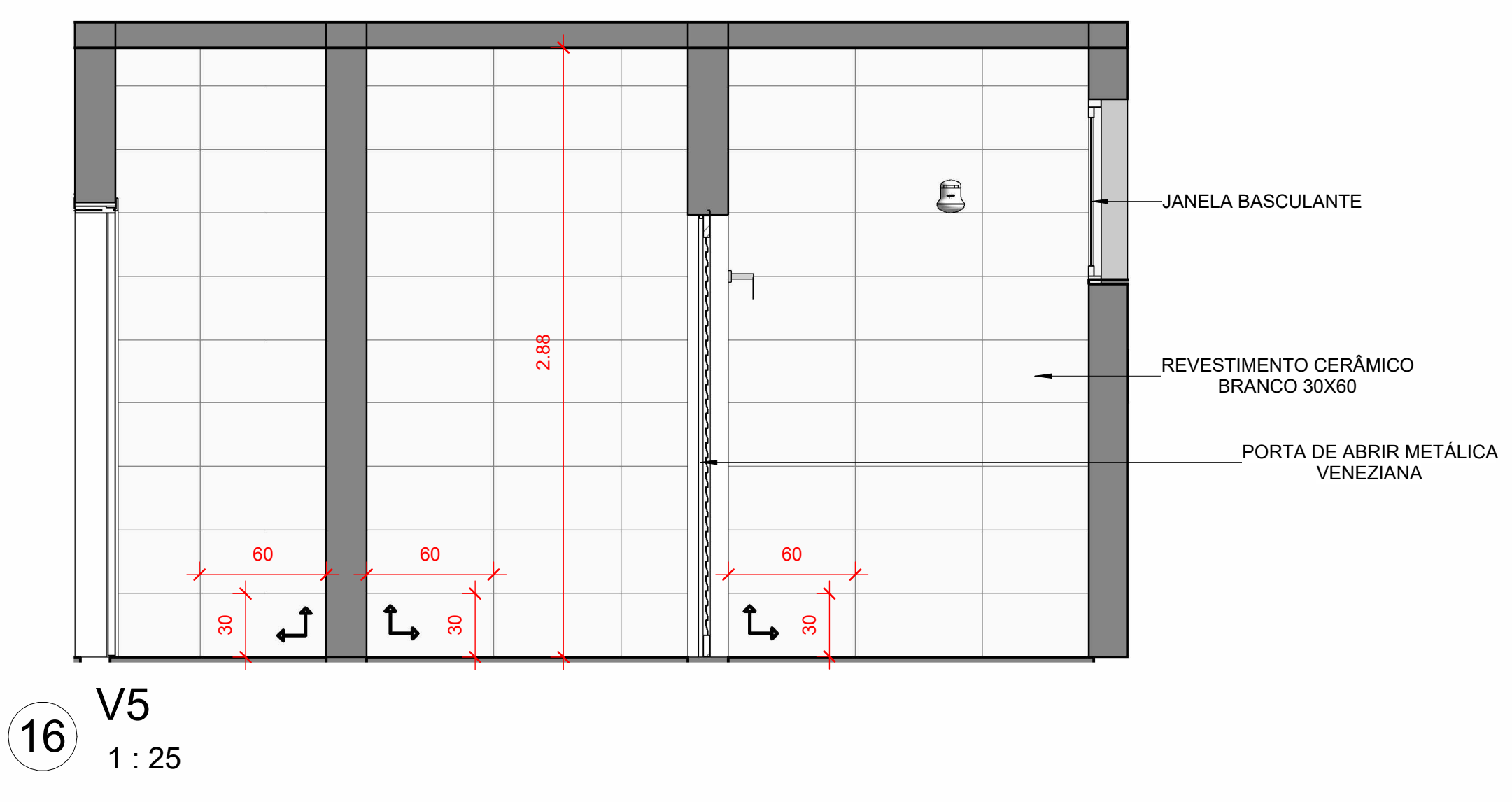
13 V2
1:25



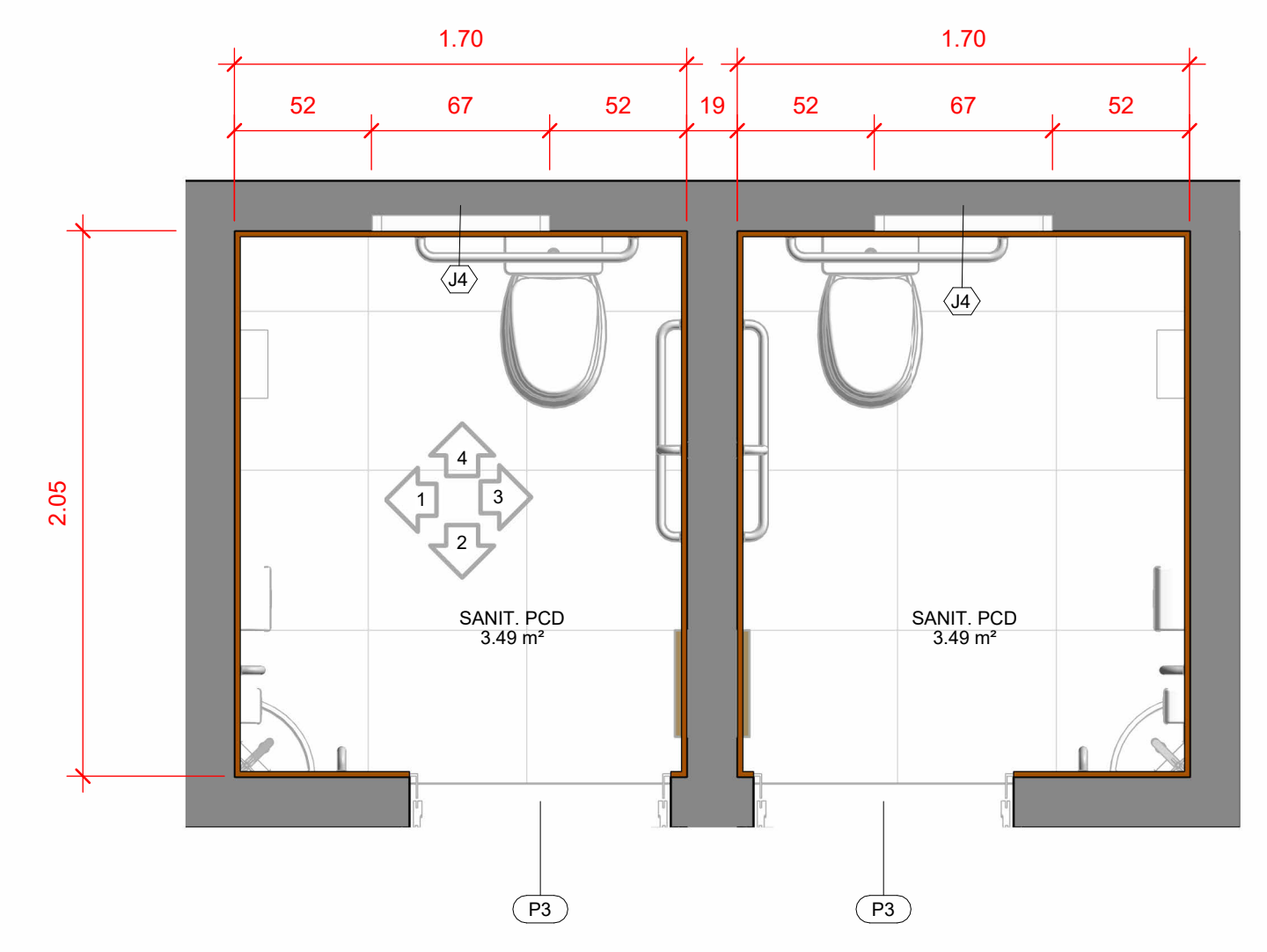
14 V3
1:25



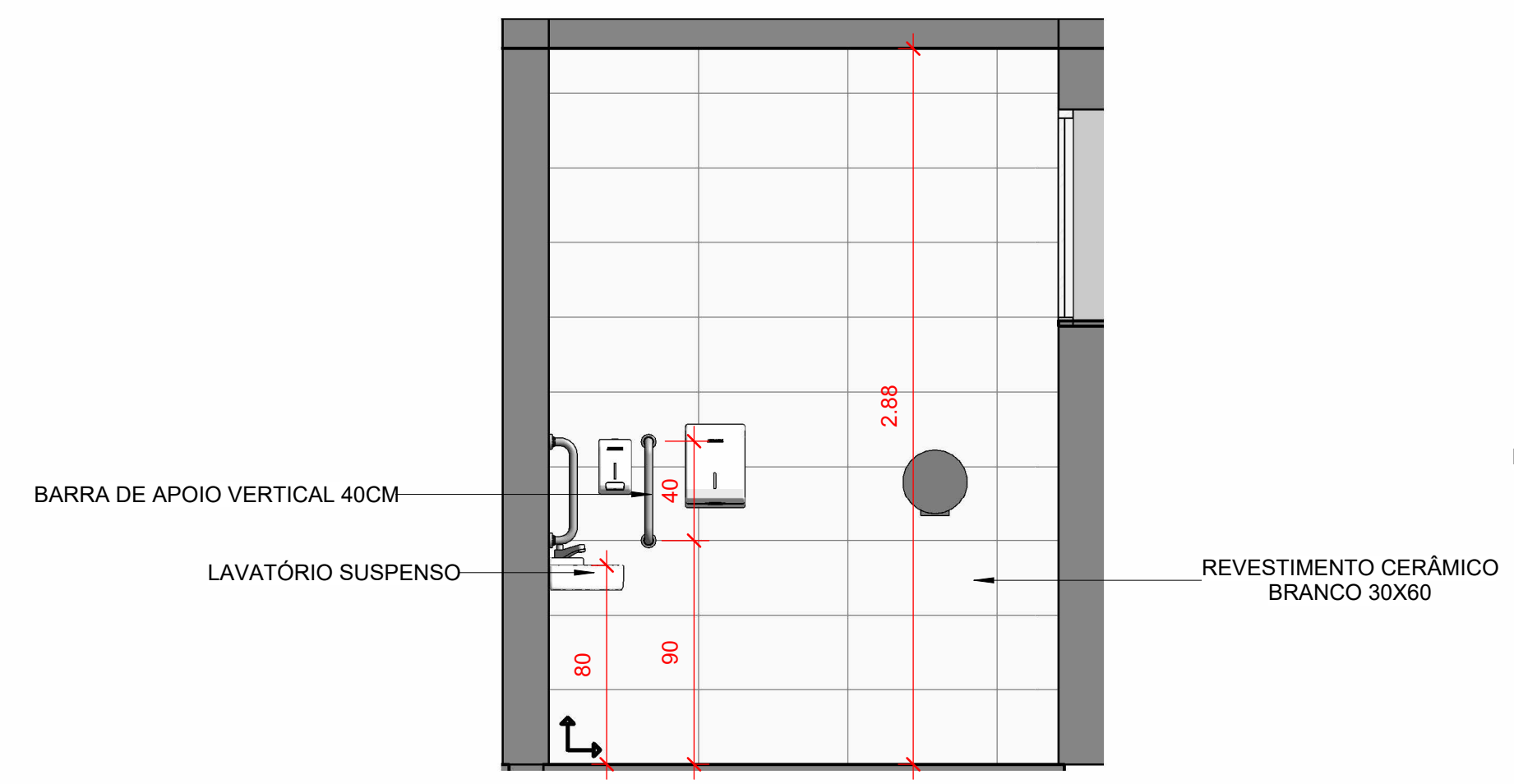
15 V4
1:25



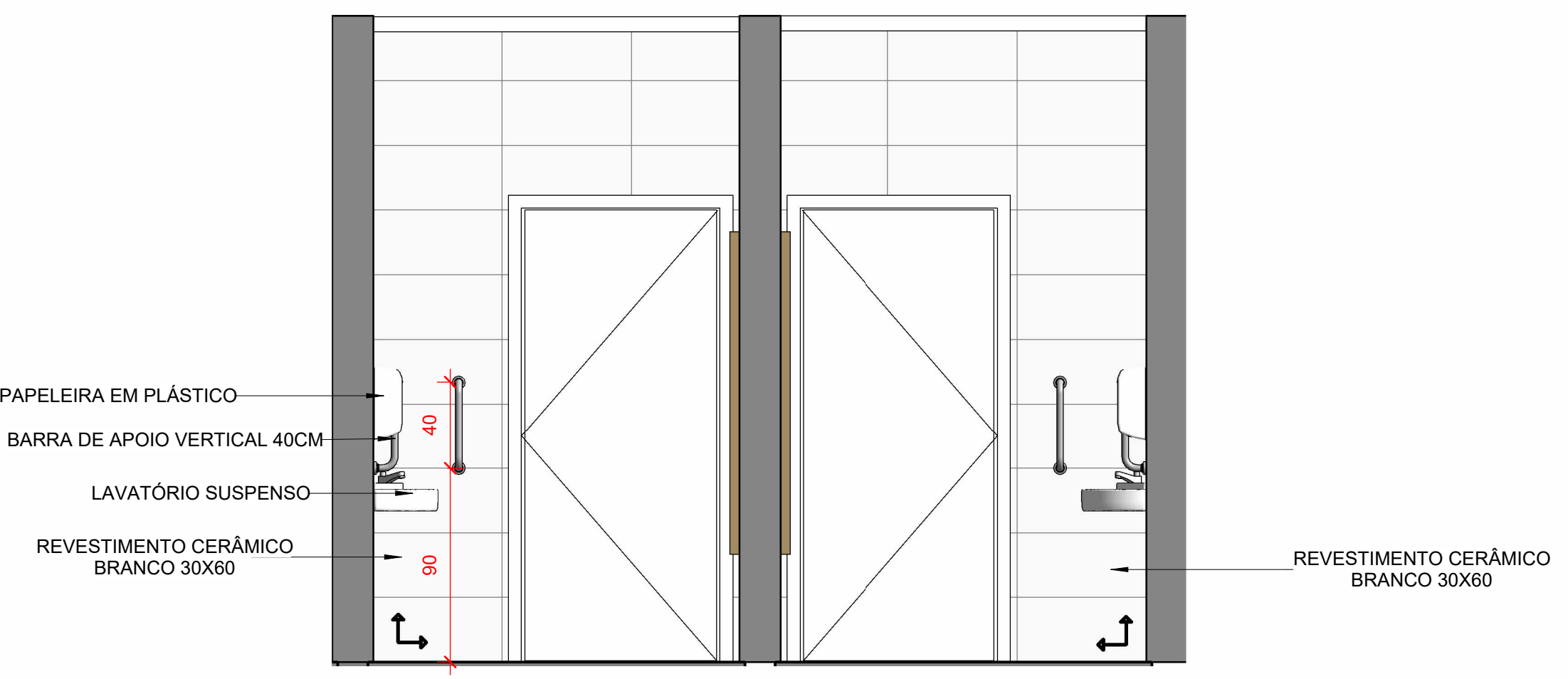
16 V5
1:25



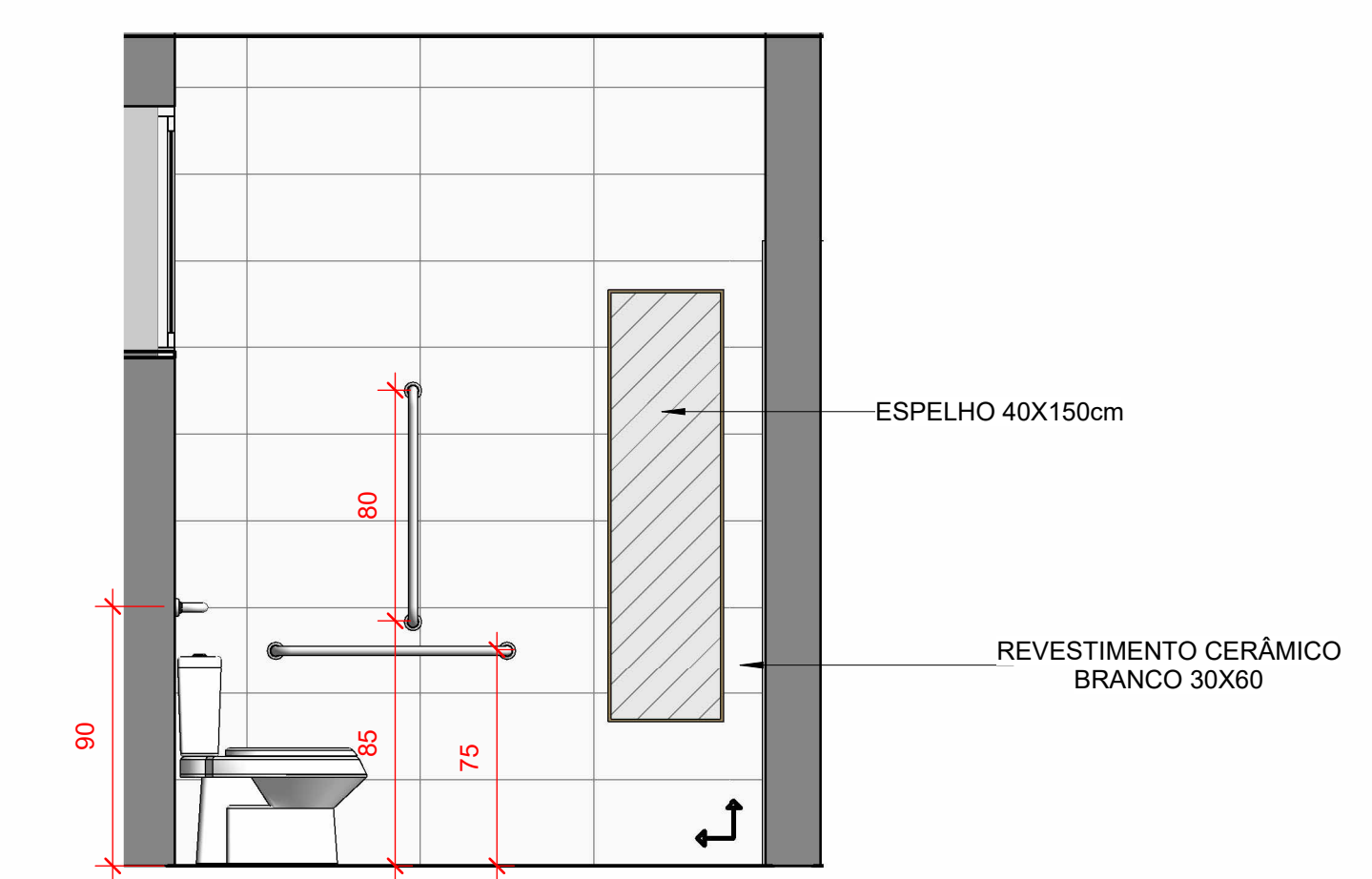
1 PLANTA BAIXA DETALHES SANIT. PCD
1:25



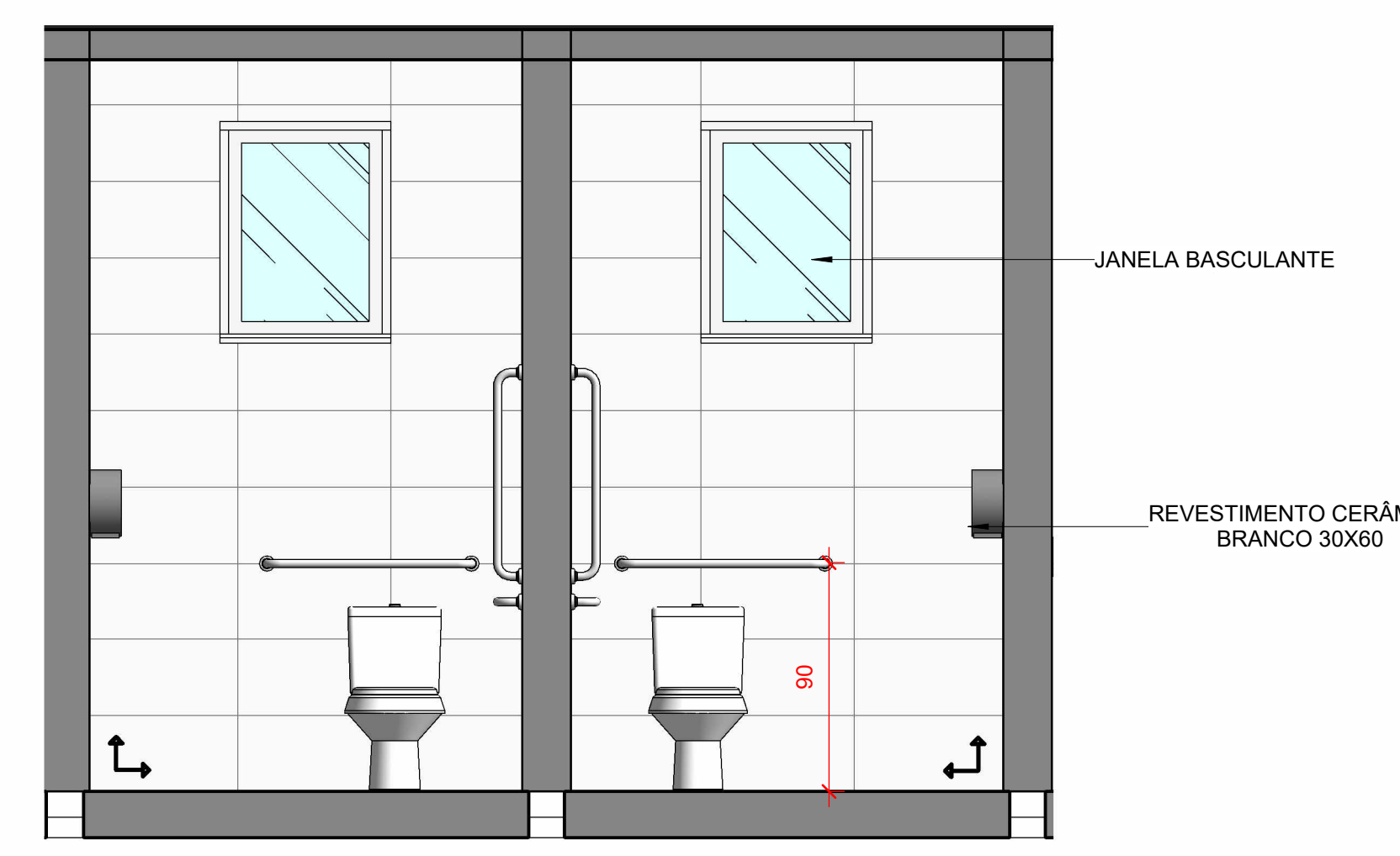
2 SANIT. PCD - VISTA 1
1:25



3 SANIT. PCD - VISTA 2
1:25



4 SANIT. PCD - VISTA 3
1:25



5 SANIT. PCD - VISTA 4
1:25

ARQUITETÔNICO		
OBRA:	Unidade Básica de Saúde Rachadel	
PROPRIETÁRIO:	Município de Antônio Carlos	
ENDEREÇO:	Rua Nilton Cleogério Schmitz, s/n, bairro Rachadel - Antônio Carlos/SC	
Município de Antônio Carlos		
Projeto de Engenharia LTDA - CREA/SC 191981-1	Rua Coronel Pedro de Oliveira nº 158 - Brusque/SC - CEP: 89104-000 - Fone: (51) 3661-4444 - contato: contato@projeto.com.br	
QuatroD		
Quatro D Engenharia LTDA - CREA/SC 191981-1	CAUF 259115-1	
Tabela de revisão		
Número	Descrição	Data
VISTAS VESTIBÁRIOS E SANITÁRIOS PCD		
Desenhada por:	Guim Menezes - CREA/SC 159.024-4	ARQ 8/9
Engenheiro Civil		
Data		Escala: Conforme Indicado