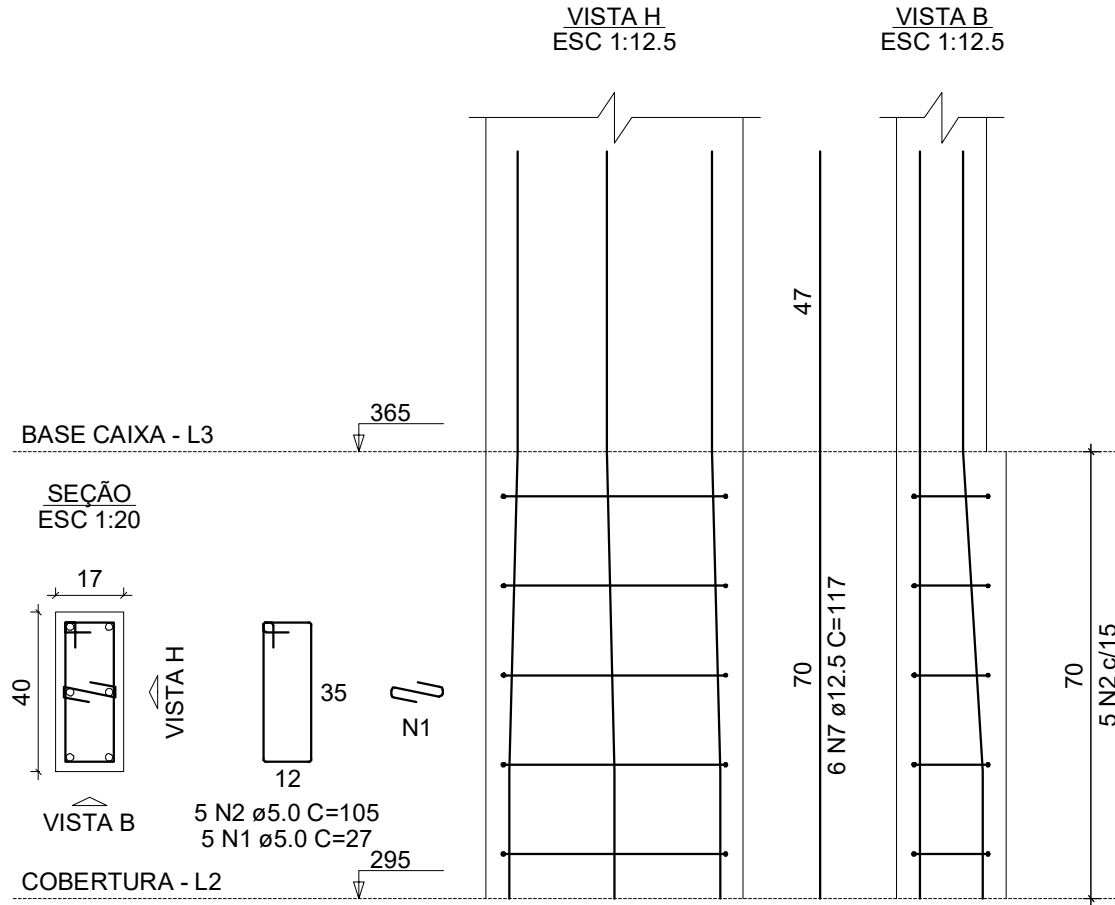
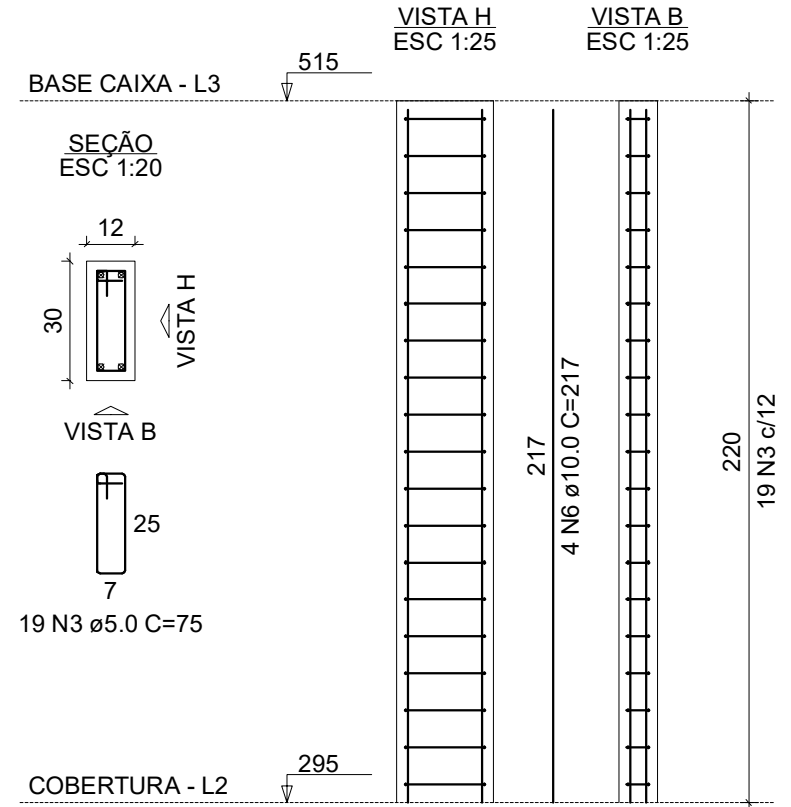


P30=P31=P36=P37



P40=P43=P44=P45



P41=P42

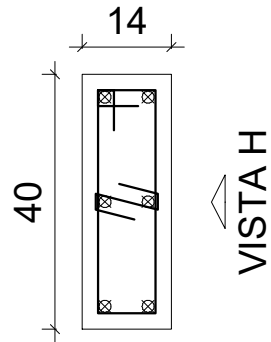
VISTA H
ESC 1:25

VISTA B
ESC 1:25

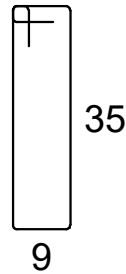
BASE CAIXA - L3

515

SEÇÃO
ESC 1:20



VISTA B

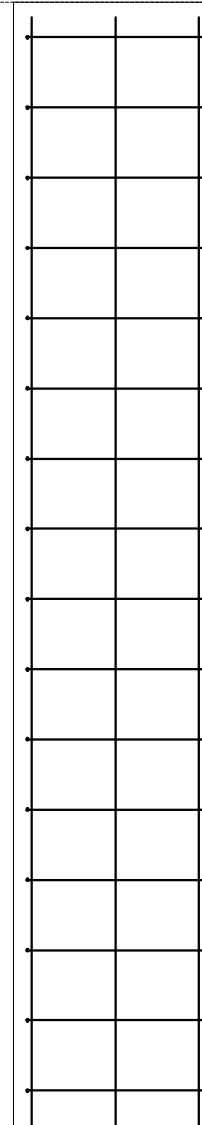


N4

16 N5 ϕ 5.0 C=99
16 N4 ϕ 5.0 C=24

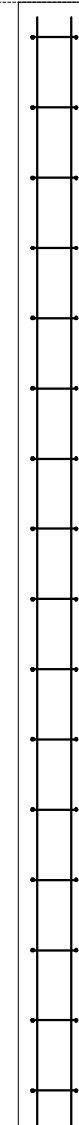
COBERTURA - L2

295



217

6 N8 ϕ 12.5 C=217



220

16 N5 c/14

RELAÇÃO DO AÇO

4xP30

4xP40

2xP41

AÇO	N	DIAM (mm)	QUANT	C.UNIT (cm)	C.TOTAL (cm)
CA60	1	5.0	20	27	540
	2	5.0	20	105	2100
	3	5.0	76	75	5700
	4	5.0	32	24	768
	5	5.0	32	99	3168
CA50	6	10.0	16	217	3472
	7	12.5	24	117	2808
	8	12.5	12	217	2604

RESUMO DO AÇO

AÇO	DIAM (mm)	C.TOTAL (m)	QUANT + 10% (Barras)	PESO + 10% (kg)
CA50	10.0	34.7	4	23.5
	12.5	54.1	5	57.3
CA60	5.0	122.8	12	20.8
PESO TOTAL (kg)				
CA50	80.9			
CA60	20.8			

Volume de concreto (C-25) = 0.75 m³

Área de forma = 15.34 m²