

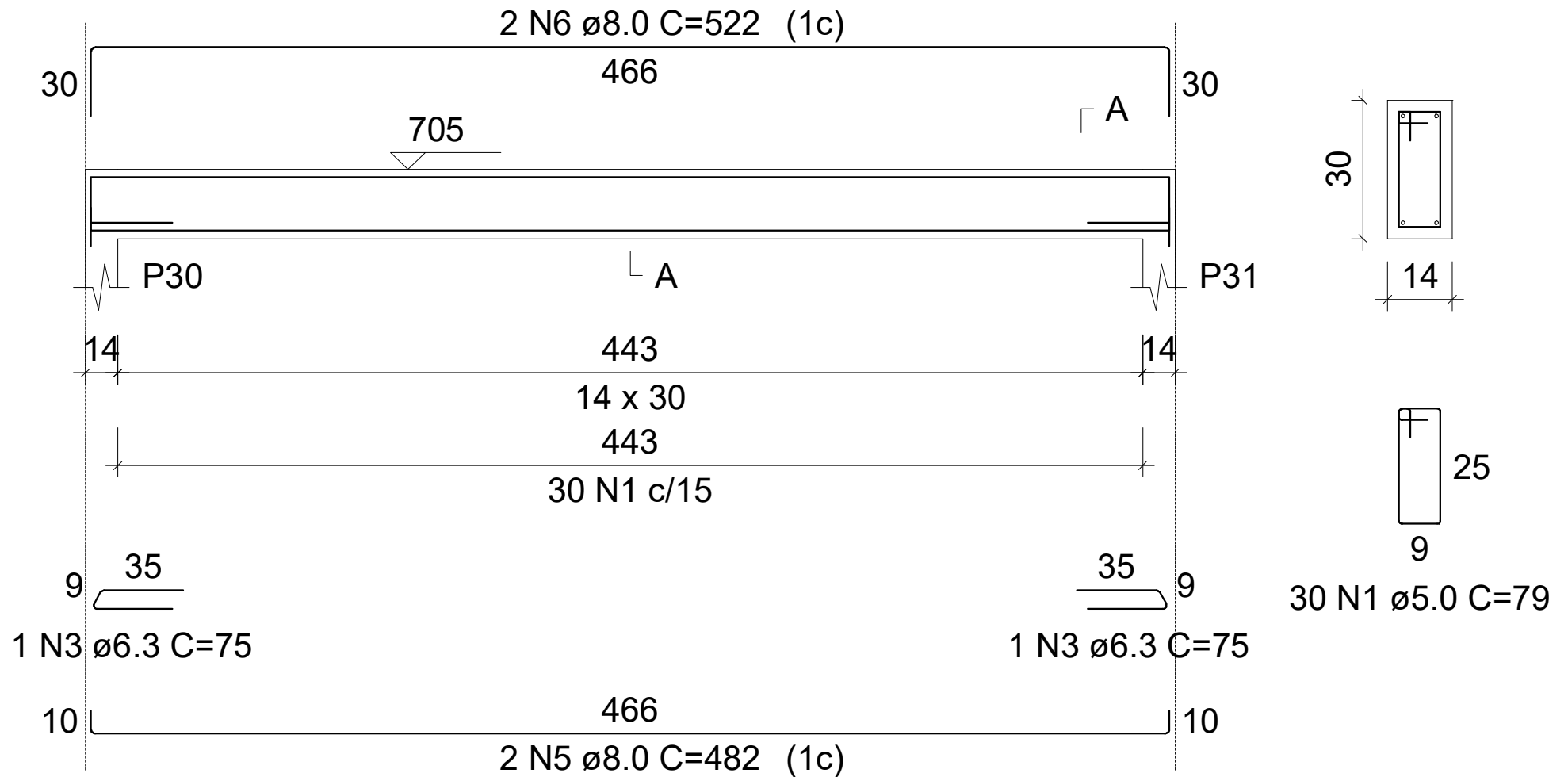
tampa caixa

V1

ESC 1:50

SEÇÃO A-A

ESC 1:25



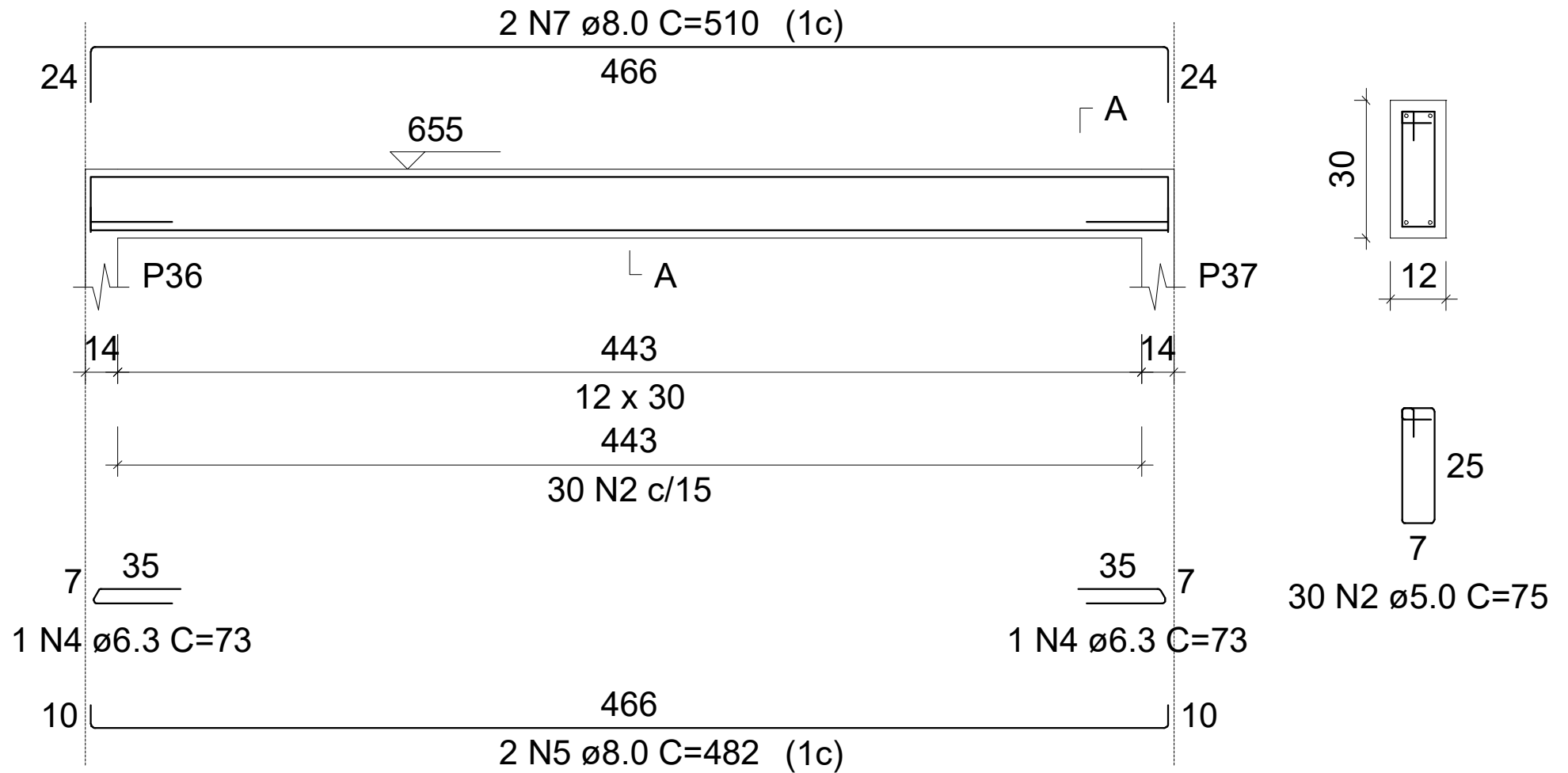
tampa caixa

V2

ESC 1:50

SEÇÃO A-A

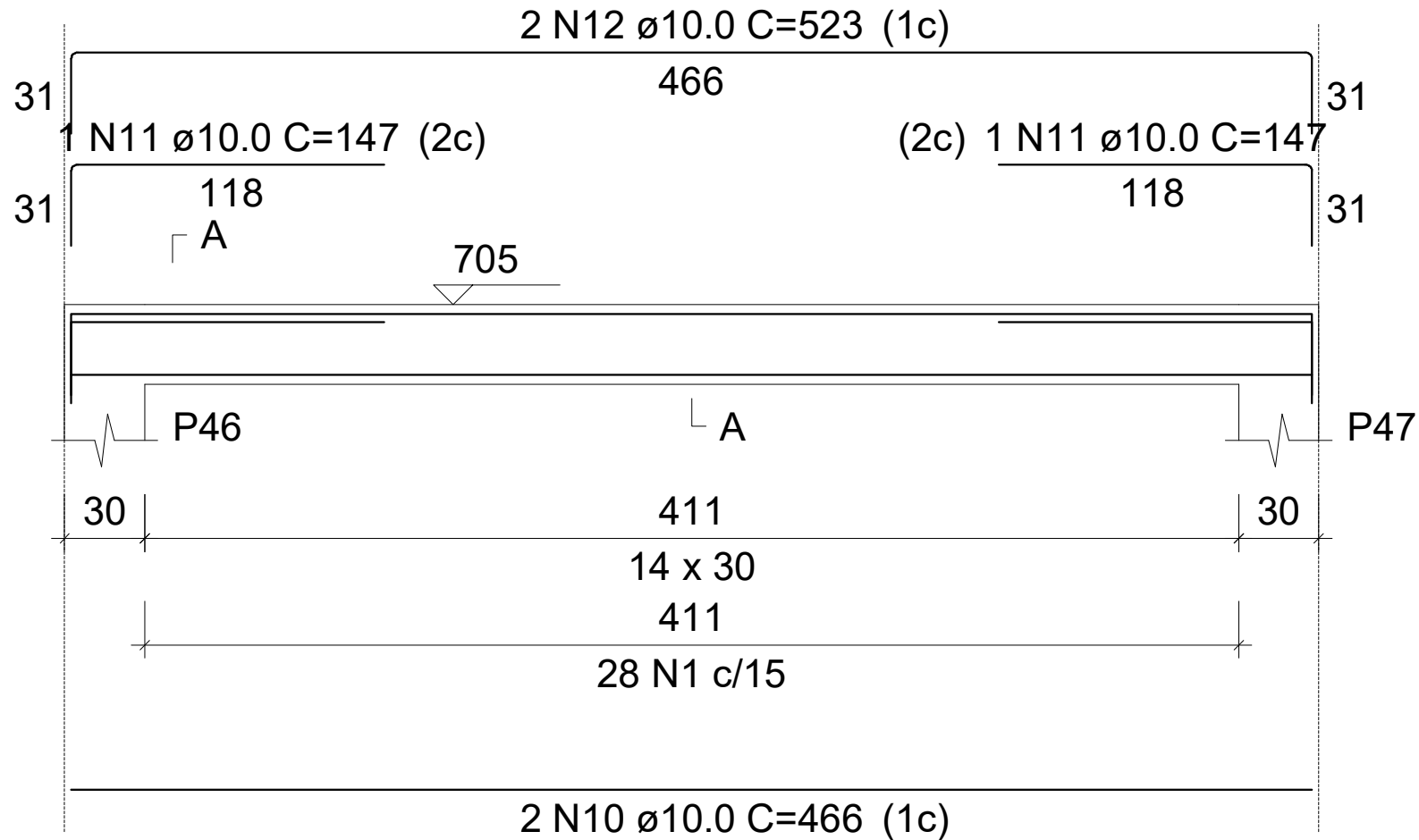
ESC 1:25



tampa caixa

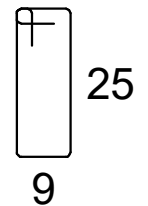
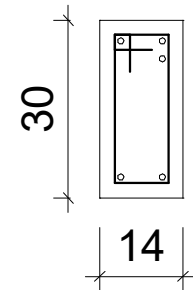
V3

ESC 1:50



SEÇÃO A-A

ESC 1:25

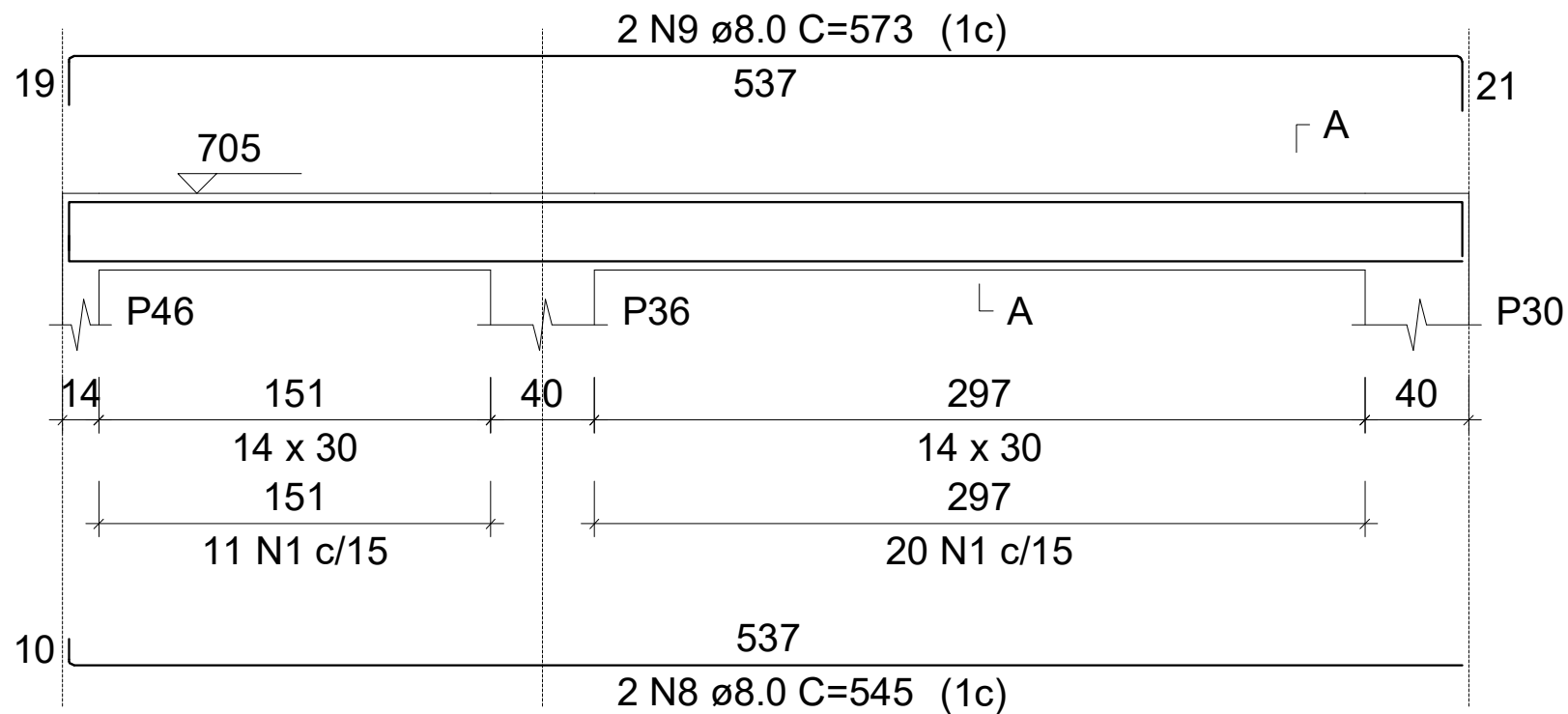


28 N1 ϕ 5.0 C=79

tampa caixa

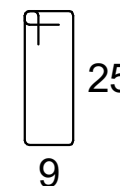
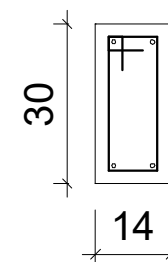
V4

ESC 1:50



SEÇÃO A-A

ESC 1:25

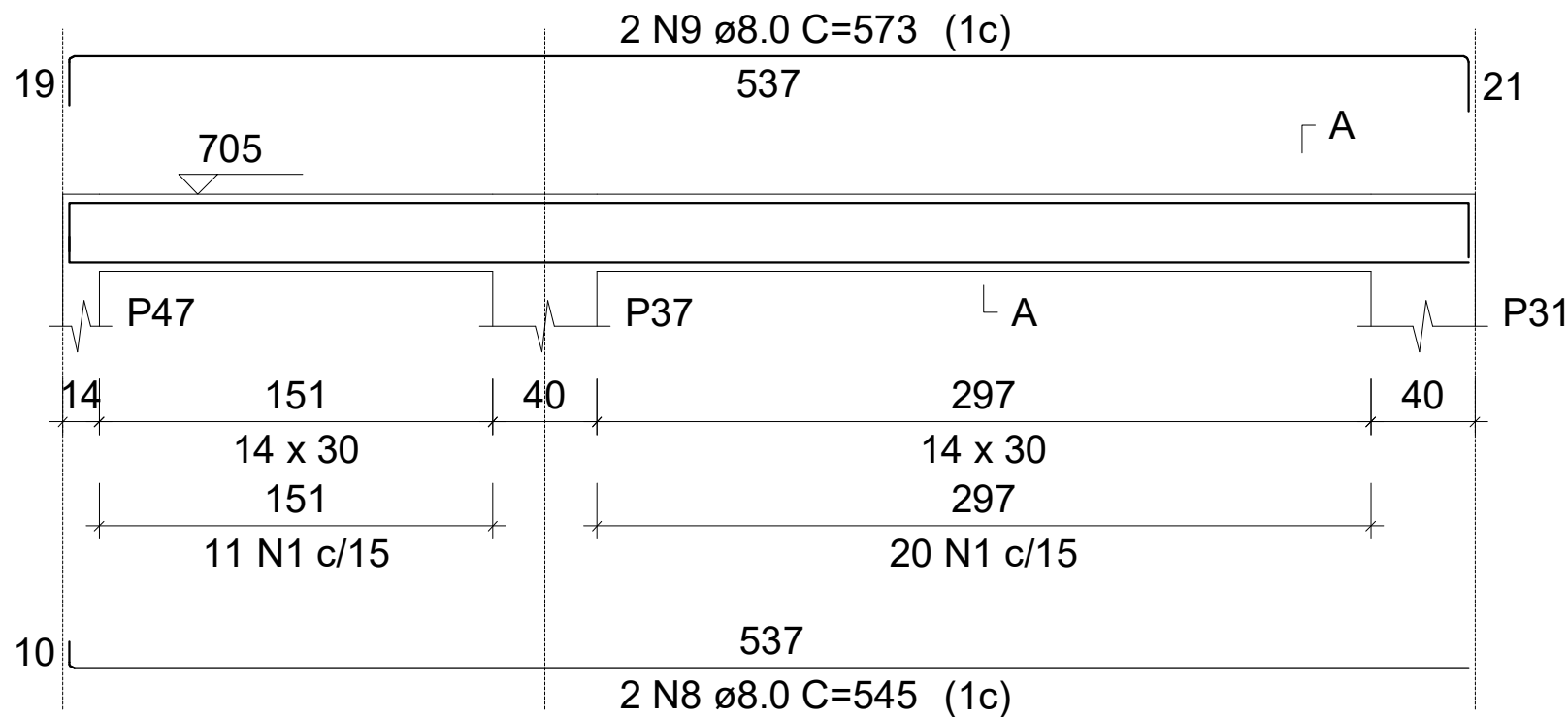


31 N1 $\varnothing 5.0$ C=79

tampa caixa

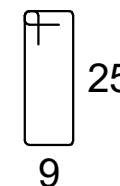
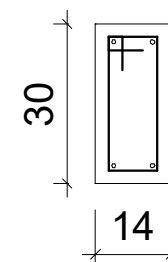
V5

ESC 1:50



SEÇÃO A-A

ESC 1:25



31 N1 $\varnothing 5.0$ C=79

RELAÇÃO DO AÇO

V1
V4

V2
V5

V3

AÇO	N	DIAM (mm)	QUANT	C.UNIT (cm)	C.TOTAL (cm)
CA60	1	5.0	120	79	9480
	2	5.0	30	75	2250
CA50	3	6.3	2	75	150
	4	6.3	2	73	146
	5	8.0	4	482	1928
	6	8.0	2	522	1044
	7	8.0	2	510	1020
	8	8.0	4	545	2180
	9	8.0	4	573	2292
	10	10.0	2	466	932
	11	10.0	2	147	294
	12	10.0	2	523	1046

RESUMO DO AÇO

AÇO	DIAM (mm)	C.TOTAL (m)	QUANT + 10% (Barras)	PESO + 10% (kg)
CA50	6.3	3	1	0.8
	8.0	84.6	8	36.7
	10.0	22.7	3	15.4
CA60	5.0	117.3	11	19.9
PESO TOTAL (kg)				
CA50	52.9			
CA60	19.9			

Volume de concreto (C-25) = 0.89 m³

Área de forma = 18.38 m²