

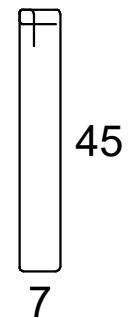
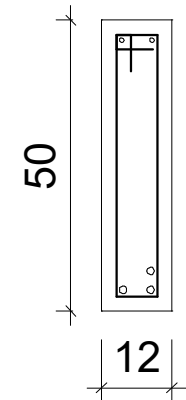
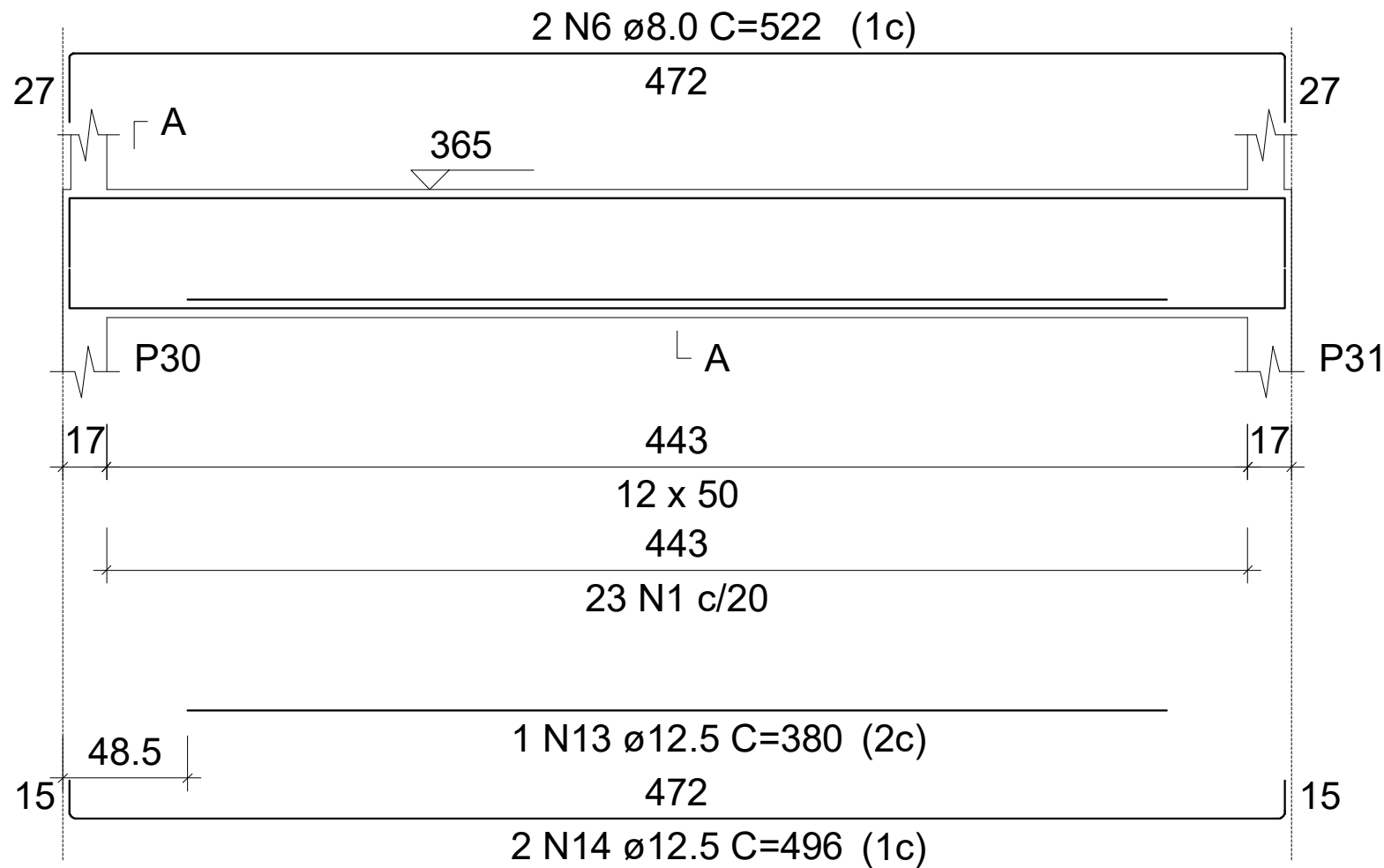
Base caixa

V1

ESC 1:50

SEÇÃO A-A

ESC 1:25



23 N1 ϕ 5.0 C=115

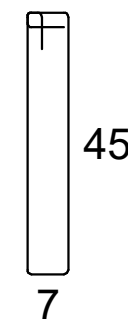
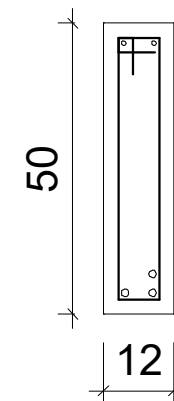
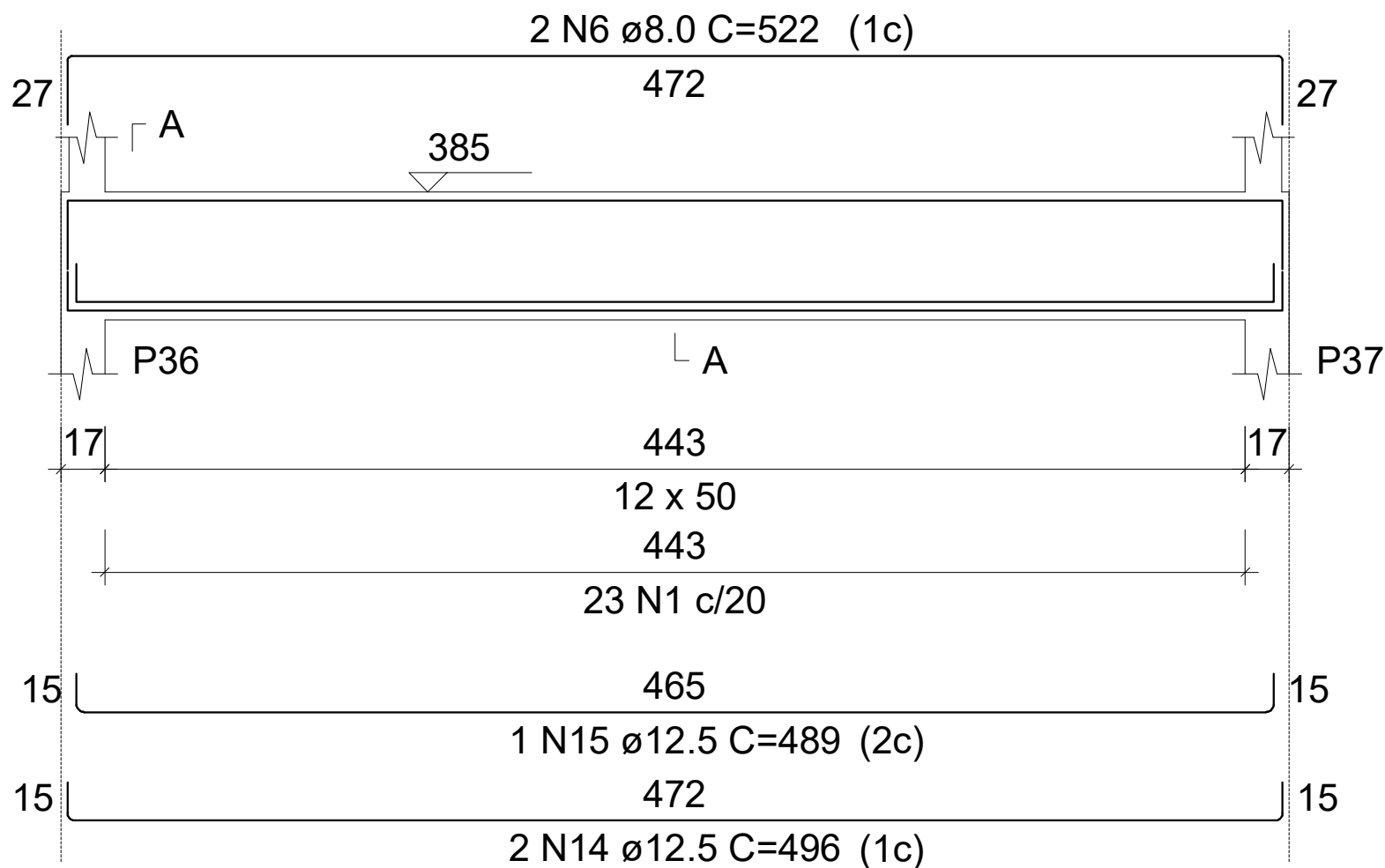
Base caixa

V2

ESC 1:50

SEÇÃO A-A

ESC 1:25



23 N1 \varnothing 5.0 C=115

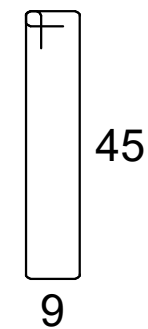
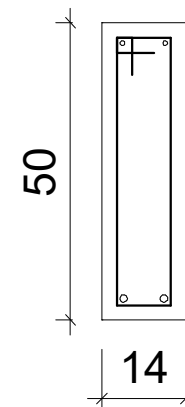
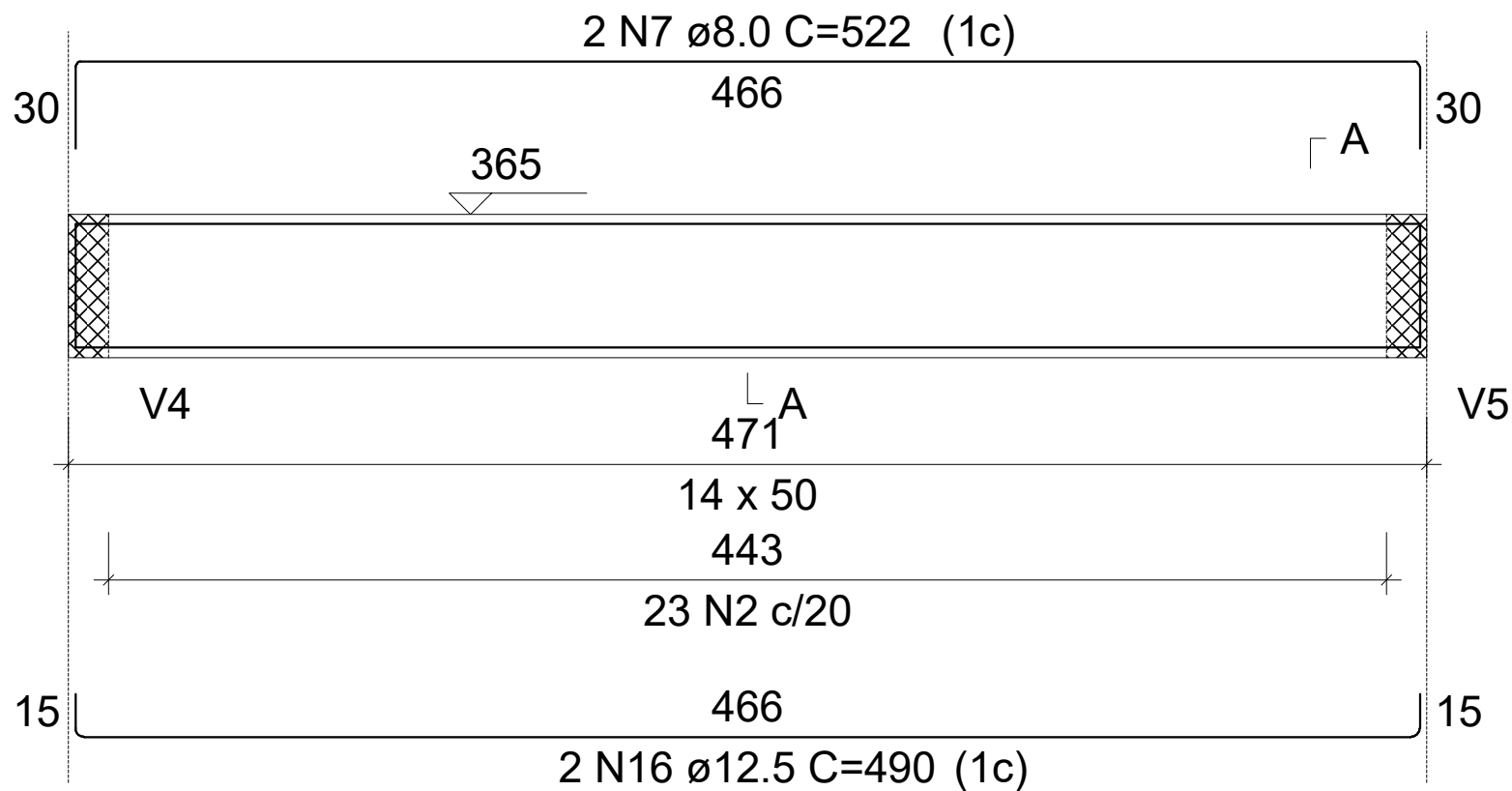
Base caixa

V3

ESC 1:50

SEÇÃO A-A

ESC 1:25

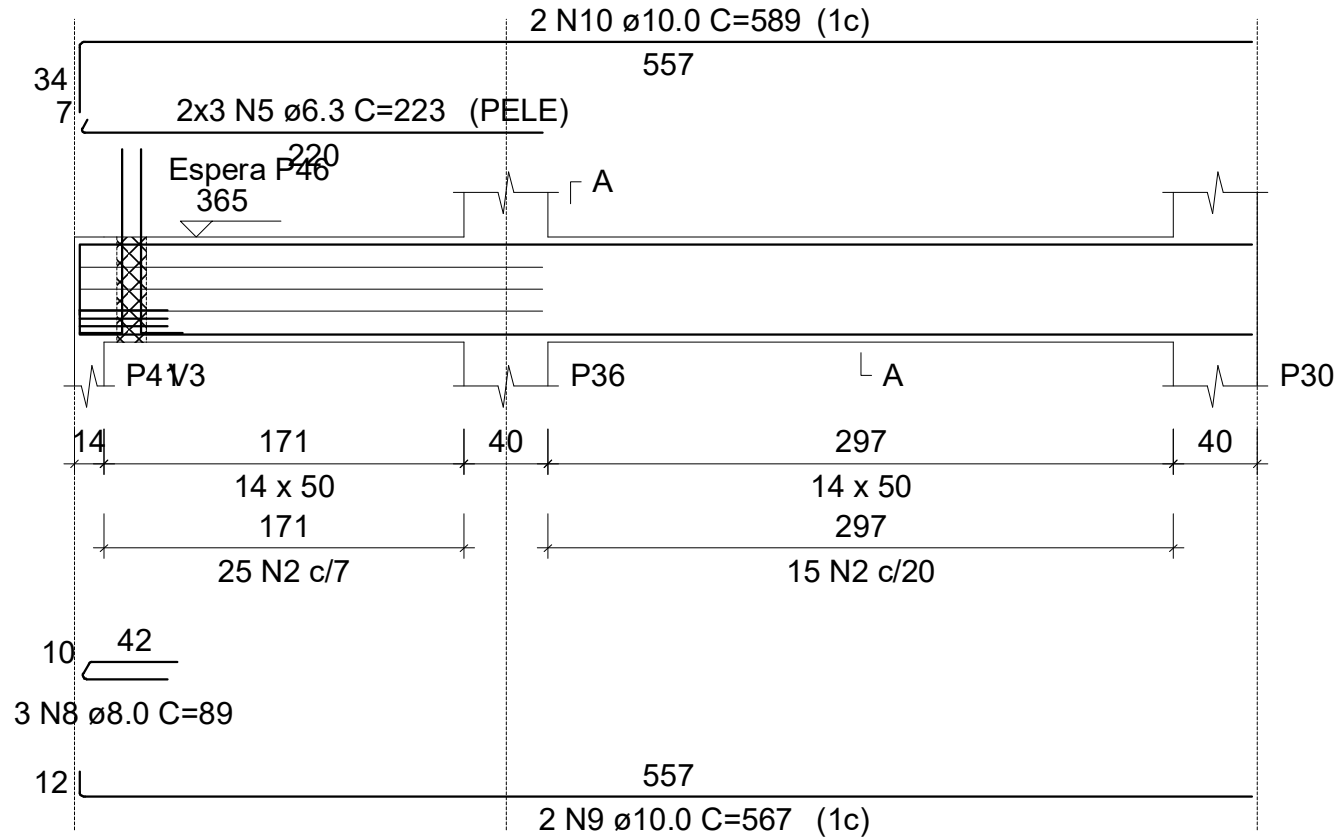


23 N2 ϕ 5.0 C=119

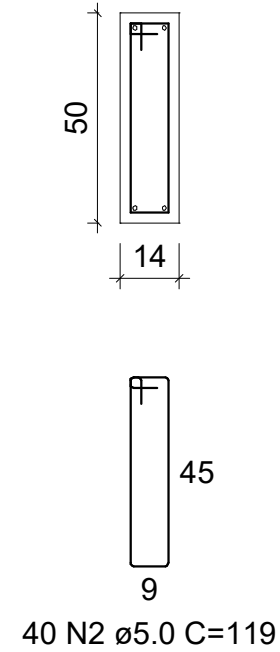
Base caixa

V4

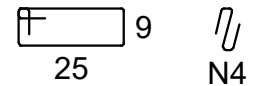
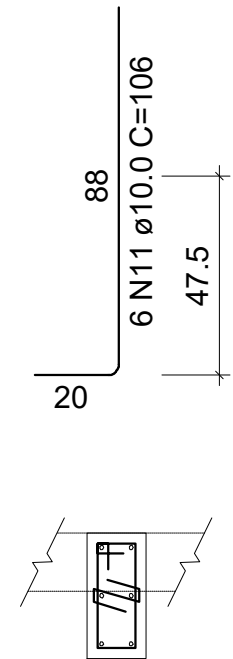
ESC 1:50



SEÇÃO A-A
ESC 1:25



ESPERA P46
ESC 1:25



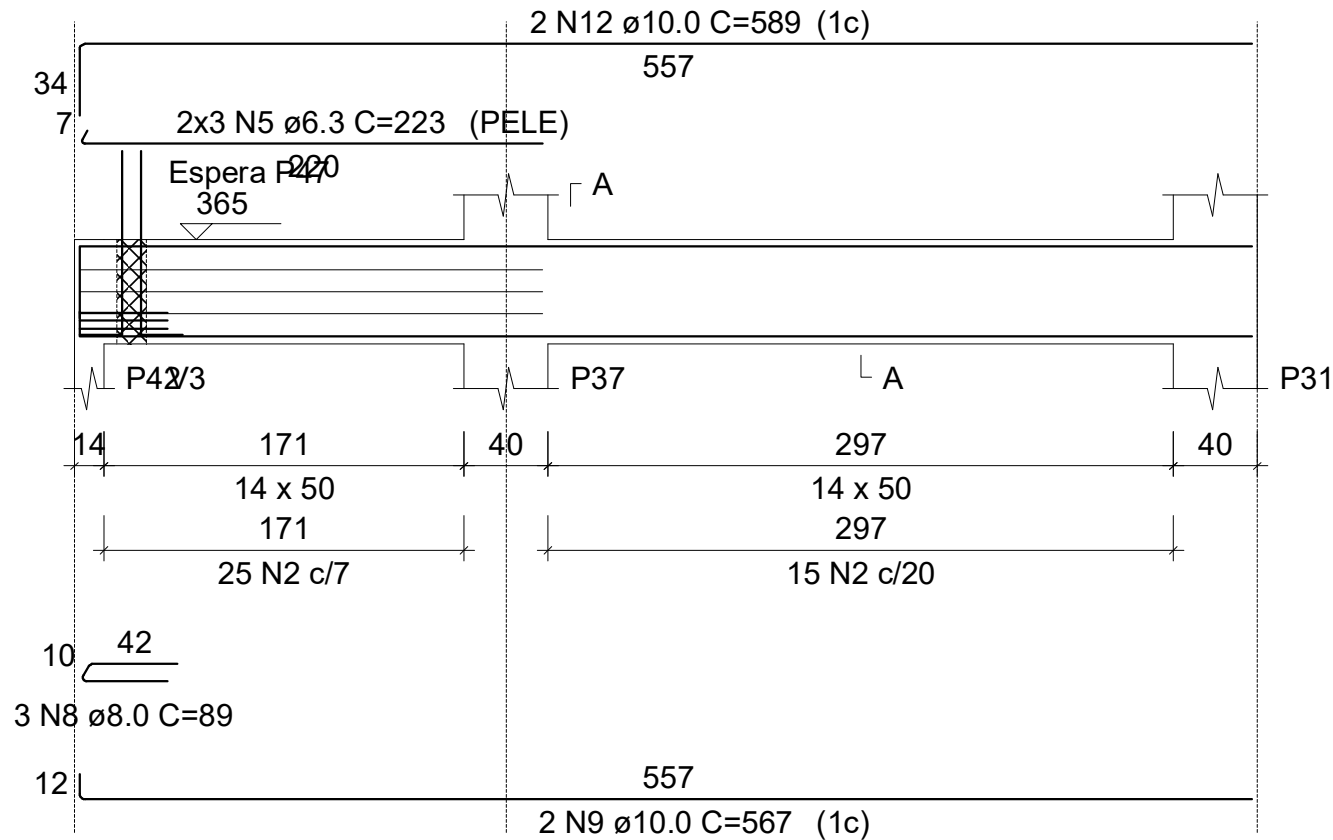
4 N3 \varnothing 5.0 c/12 C=78

4 N4 \varnothing 5.0 C=24

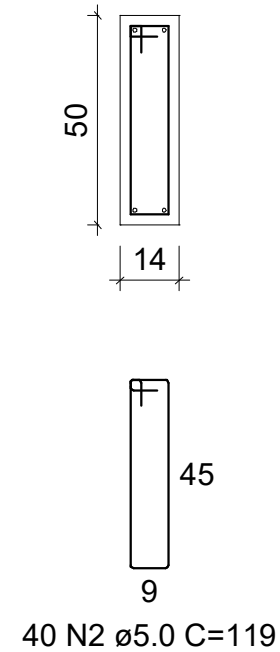
Base caixa

V5

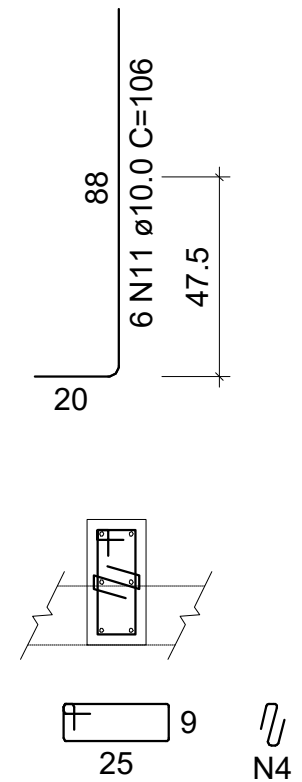
ESC 1:50



SEÇÃO A-A
ESC 1:25



ESPERA P47
ESC 1:25



4 N3 ϕ 5.0 c/12 C=78
4 N4 ϕ 5.0 C=24

RELAÇÃO DO AÇO

V1
V4

V2
V5

V3

AÇO	N	DIAM (mm)	QUANT	C.UNIT (cm)	C.TOTAL (cm)
CA60	1	5.0	46	115	5290
	2	5.0	103	119	12257
	3	5.0	8	78	624
	4	5.0	8	24	192
CA50	5	6.3	12	223	2676
	6	8.0	4	522	2088
	7	8.0	2	522	1044
	8	8.0	6	89	534
	9	10.0	4	567	2268
	10	10.0	2	589	1178
	11	10.0	12	106	1272
	12	10.0	2	589	1178
	13	12.5	1	380	380
	14	12.5	4	496	1984
	15	12.5	1	489	489
	16	12.5	2	490	980

RESUMO DO AÇO

AÇO	DIAM (mm)	C.TOTAL (m)	QUANT + 10% (Barras)	PESO + 10% (kg)
CA50	6.3	26.8	3	7.2
	8.0	36.7	4	15.9
	10.0	59	6	40
	12.5	38.3	4	40.6
CA60	5.0	183.6	17	31.1
PESO TOTAL (kg)				
CA50	103.7			
CA60	31.1			

Volume de concreto (C-25) = 1.52 m³

Área de forma = 28.87 m²