

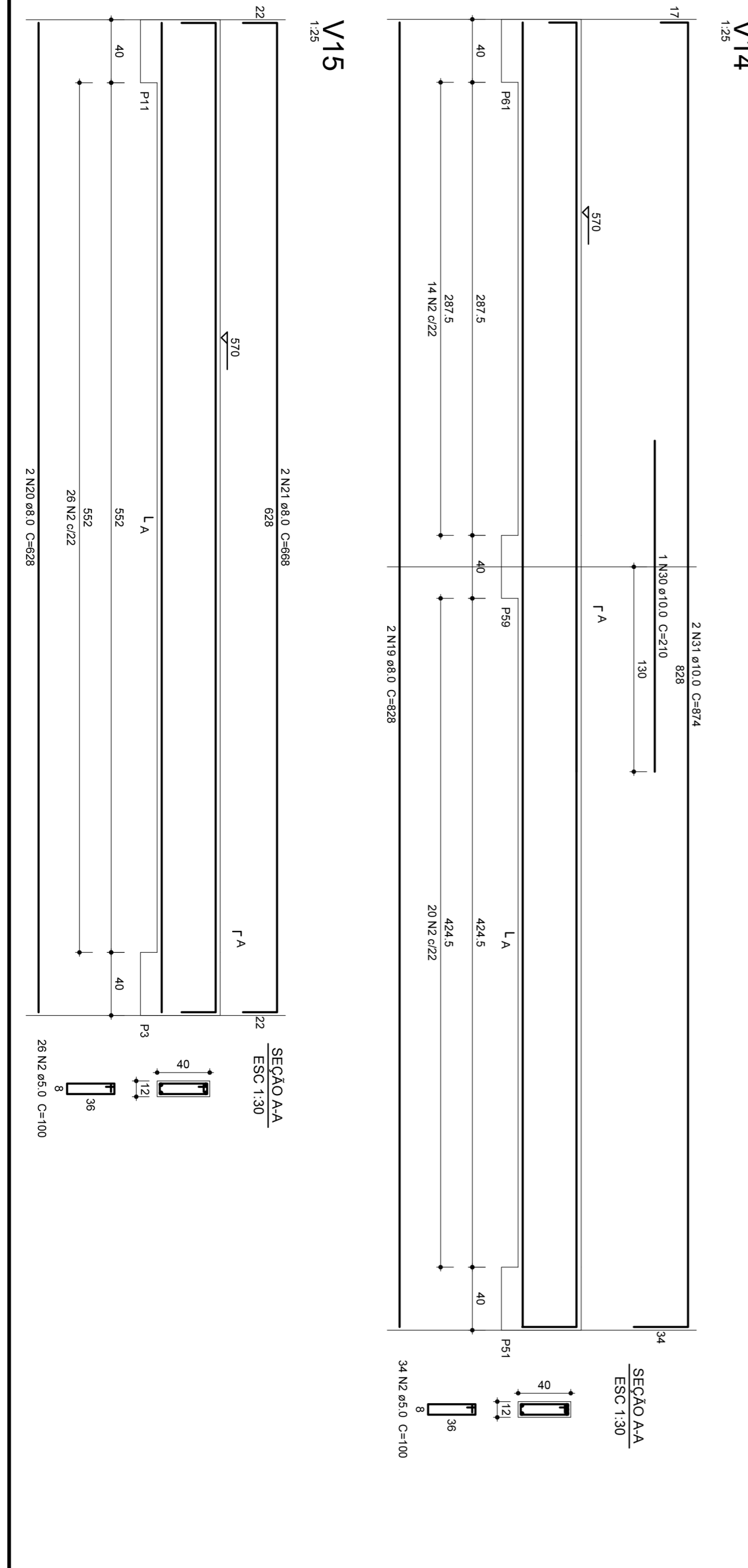
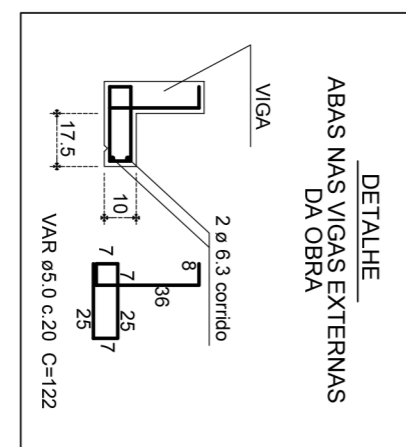
Relação do aço

ACO	N	DIAM	Q	UNIT	COTOTAL
C400	1	5,0	82	(cm)	(cm²)
C400	2	5,0	314	100	31400
C400	3	5,0	2	232	464
C400	4	8,0	6	812	4872
C400	5	8,0	2	1110	2220
C400	6	8,0	2	625	1250
C400	7	8,0	2	1250	2500
C400	8	8,0	2	146	292
C400	9	8,0	2	833	1666
C400	10	8,0	2	352	704
C400	11	8,0	1	154	308
C400	12	8,0	1	154	308
C400	13	8,0	1	154	308
C400	14	8,0	4	1107	4428
C400	15	8,0	1	156	312
C400	16	8,0	1	156	312
C400	17	8,0	1	153	306
C400	18	8,0	2	851	1702
C400	19	8,0	2	828	1656
C400	20	8,0	2	688	1376
C400	21	8,0	2	688	1376
C400	22	10,0	1	1198	2396
C400	23	10,0	2	2396	4792
C400	24	10,0	2	235	470
C400	25	10,0	2	828	1656
C400	26	10,0	2	828	1656
C400	27	10,0	2	1480	2960
C400	28	10,0	2	830	1660
C400	29	10,0	2	210	420
C400	30	10,0	1	824	1648
C400	31	10,0	2	824	1648

Resumo do aço

ACO	DIAM	COTOTAL	FESO + 10%
C400	8,0	159,5	175,5
C400	10,0	159,5	175,5
C400	5,0	405,6	446,2
C400	6,8	68,8	75,7

Vol. de concreto total (C=25) = 4,714 m³
Área de forma total = 86,85 m²



ESTRUTURAL
ANTÔNIO CARLOS - SC

MUNICÍPIO

OBRA: ESCOLA MUNICIPAL

PROJETO: ESCOLA MUNICIPAL

Eng. CIVIL Virginia Maria Wolff

CREA-SC 37928-1

DESENHO: ESCOLA

GRANFPOUS

INDICADAS

DATA: DEZ/2011

ÁREA: 1301,00m²

FRANCHA: 20/26

CONTEUDO: VIEWS DA COBERTURA - PLANCHA 2

ASSOCIAÇÃO DOS MUNICÍPIOS DA REGIÃO DA GRANDE FLORIANÓPOLIS "GRANFPOUS"

ASSESSORIA DE ENGENHARIA E ARQUITETURA