

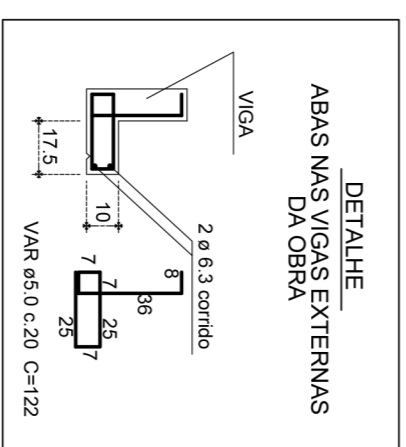
Relação do aço

ACO	N	DIAM	Q	UNIT	C TOTAL
CA50	1	5,0	284	(CM)	2968,4
	2	5,0	8	CPNR	2880
	3	5,0	8	CPNR	2880
	4	5,0	66	140	8240
	5	5,0	2	CPNR	200
	6	5,0	2	CPNR	200
	7	5,0	10	108	1080
	8	5,0	2	100	200
	9	5,0	2	127	254
	10	6,3	2	110	220
	11	8,0	2	410	820
	12	8,0	4	833	3332
	13	8,0	2	254	508
	14	8,0	2	254	508
	15	8,0	2	288	596
	16	8,0	2	821	1642
	17	8,0	2	410	820
	18	8,0	2	228	456
	19	8,0	2	812	1624
	20	8,0	2	788	1576
	21	8,0	3	505	1515
	22	8,0	3	625	1875
	23	8,0	1	208	208
	24	8,0	1	208	208
	25	8,0	2	282	564
	26	8,0	2	282	564
	27	10,0	1	1200	1200
	28	10,0	1	288	288
	29	10,0	2	576	1152
	30	10,0	2	576	1152
	31	10,0	1	1095	1095
	32	10,0	1	188	188
	33	10,0	1	188	188
	34	12,5	2	431	862
	35	12,5	2	605	1210
	36	12,5	1	605	605
	37	12,5	3	1815	3630
	38	12,5	1	242	242
	39	12,5	2	484	968
	40	12,5	2	484	968
	41	12,5	2	818	1636
	42	12,5	2	708	1416

Resumo do aço

ACO	DIAM	C TOTAL	FESO + 10%
CA50	6,3	186,4	80,9
	8,0	107,7	72,6
	10,0	107,7	114,1
CA80	12,5	485,8	62,4
<b>FESO TOTAL</b>			<b>324,0</b>
CA50	288,4		
CA80	62,4		

Vol. de concreto total (C-25) = 4,23 m³  
Área de forma total = 79,59 m²



# ESTRUTURAL

## ANTÔNIO CARLOS - SC

MUNICÍPIO

OPERAÇÃO: ESCOLA MUNICIPAL

CONTEÚDO: VIGAS DA COBERTURA - PRANCHA 1

PROJETO: Eng. Civil Virginia Maria Wolff

DESENHO: GRANFOLIS

INDICADAS: DATA: 13/01/2011

ÁREA: 1301,00m²

FRANCHA: 19/26