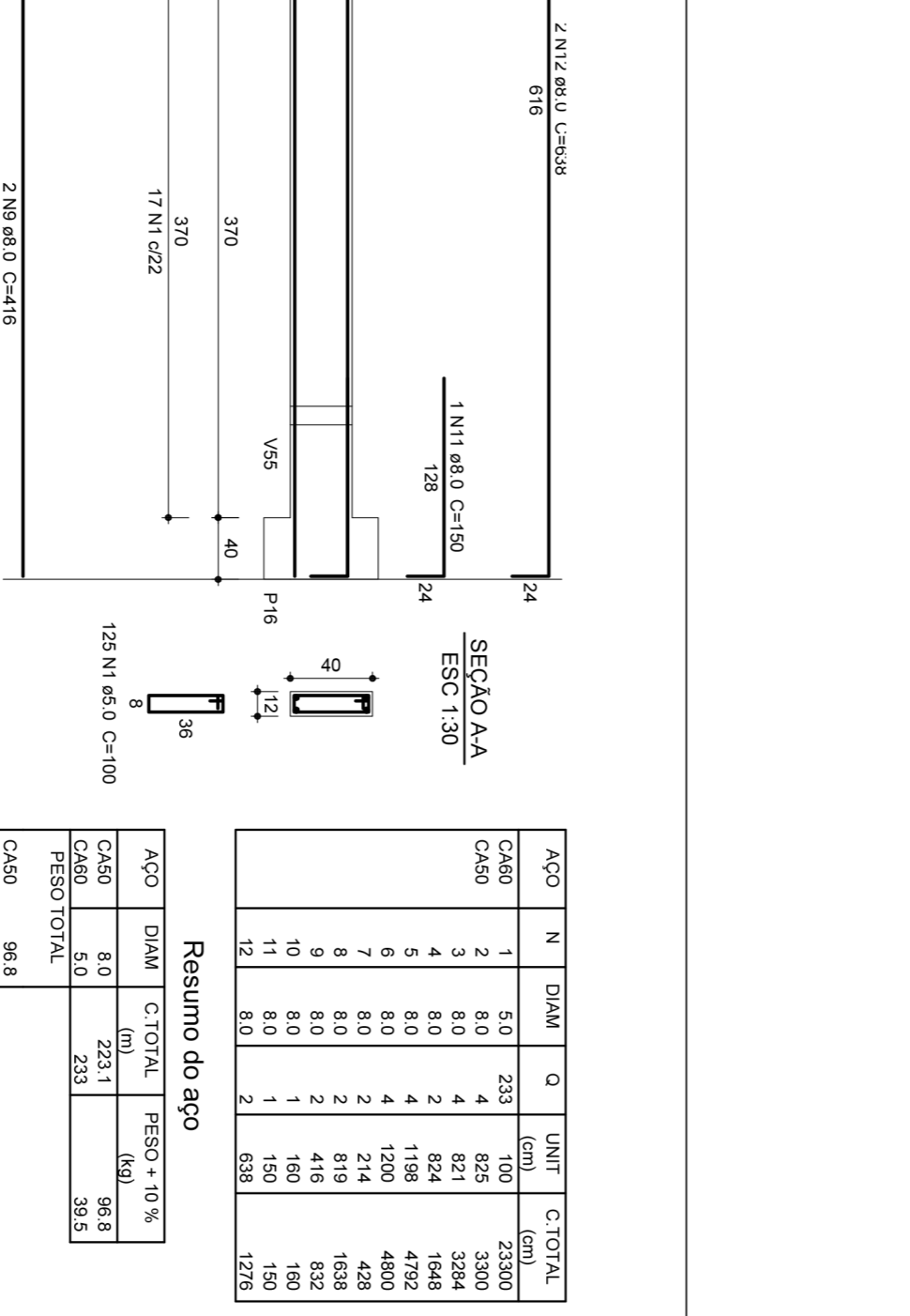
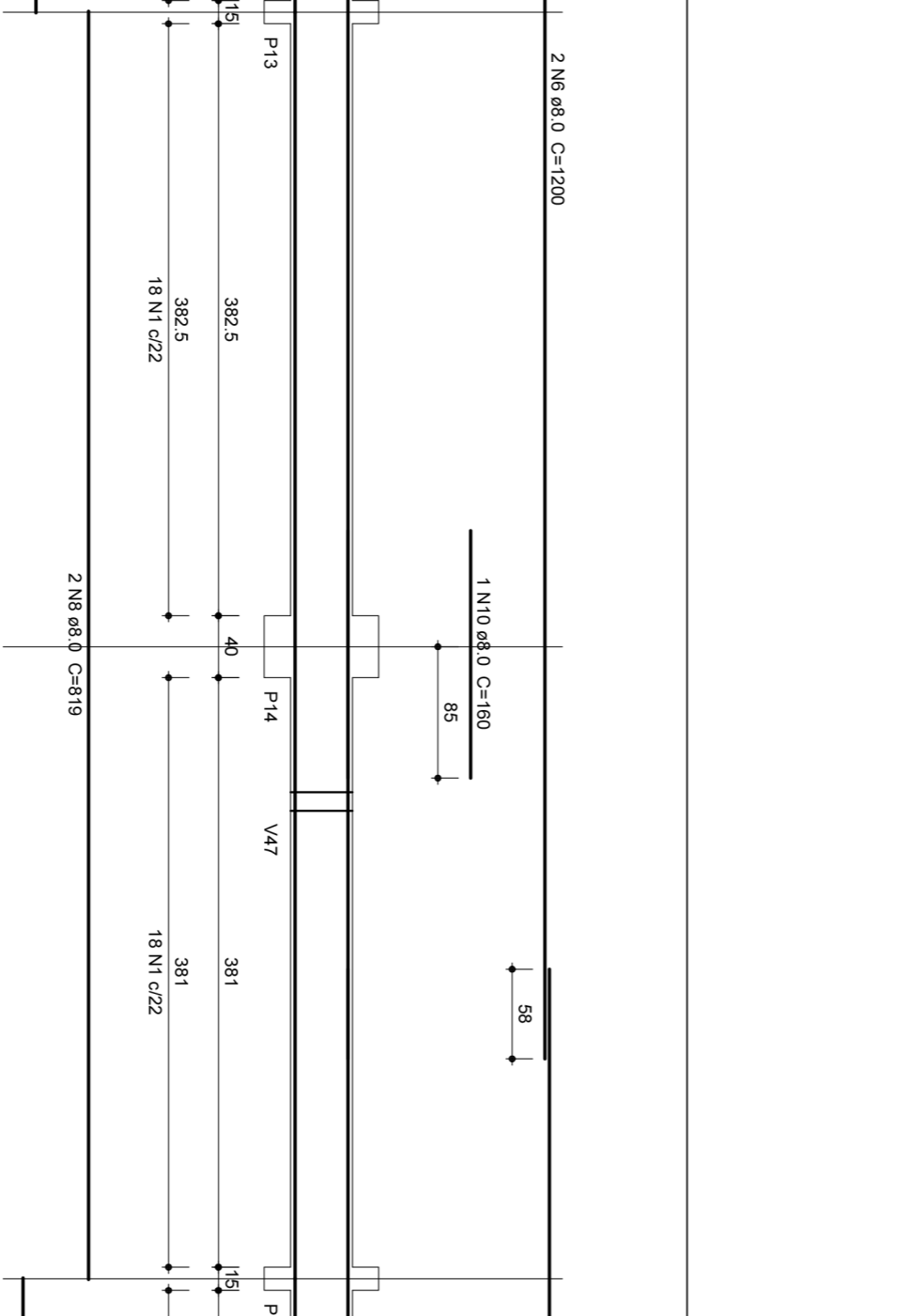
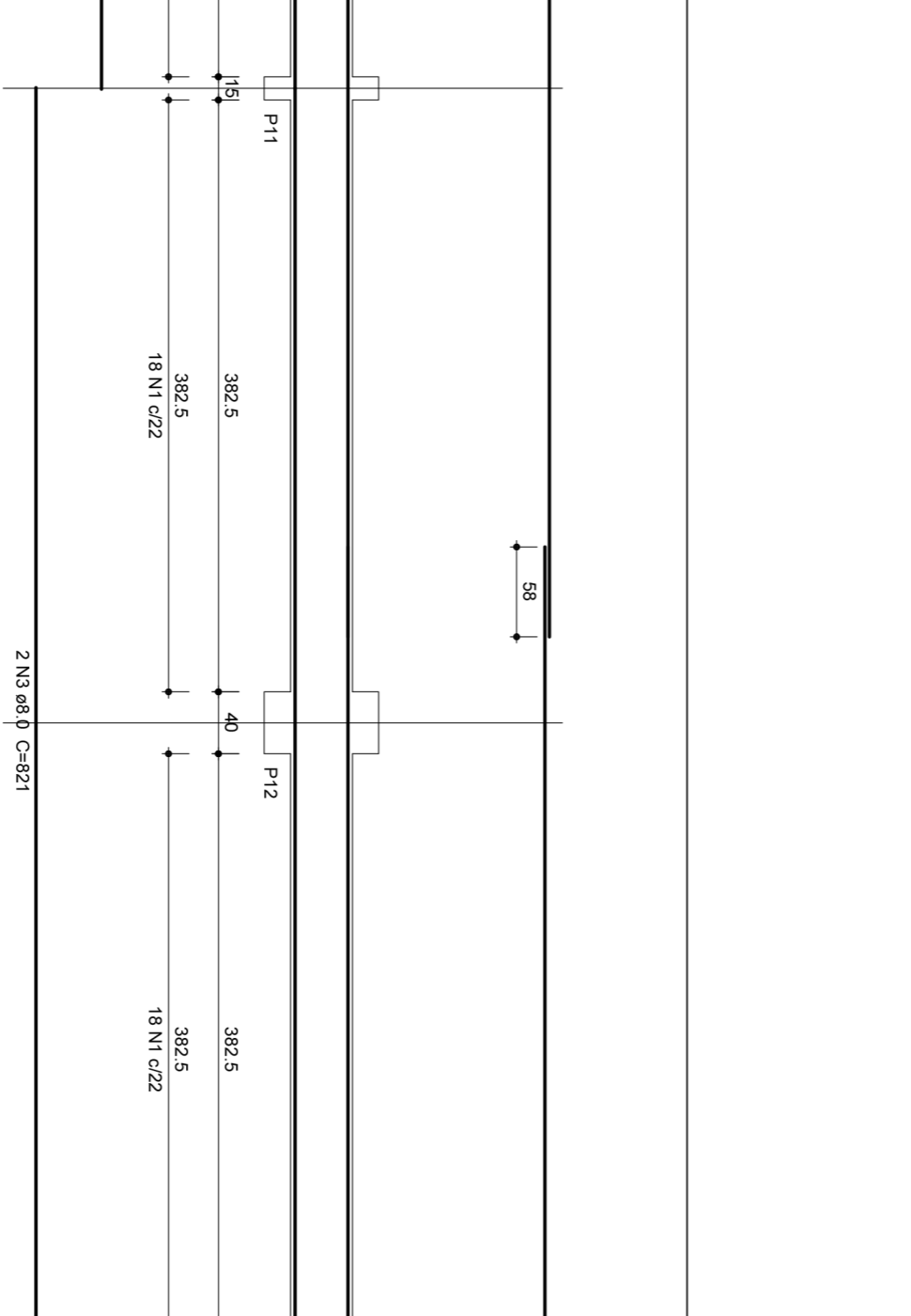
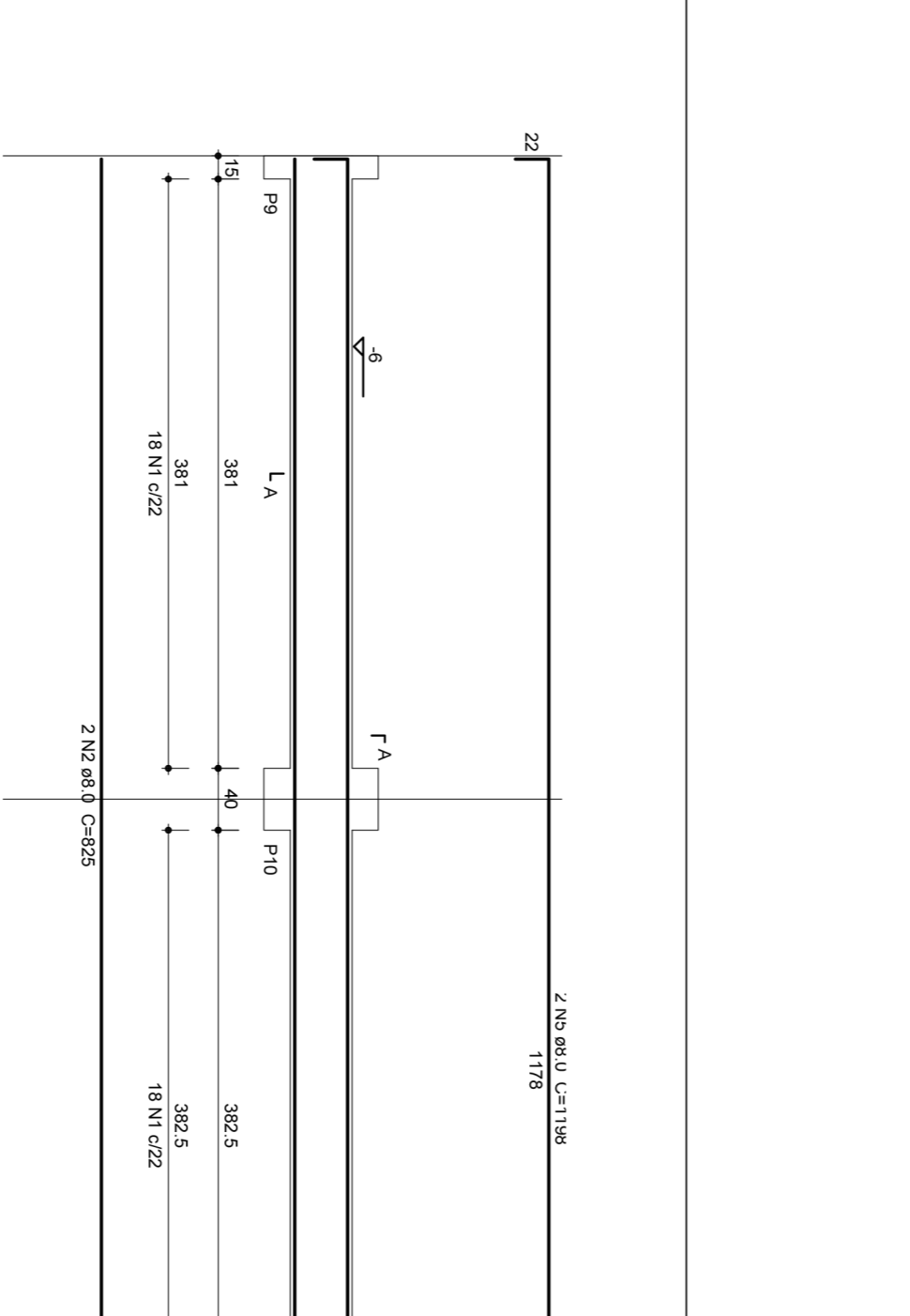


Relatório do aço

ACO	N	DIAM	Q	UNIT	C/TOTAL	RESO - 10 %
CA80	1	8.0	227	620	140200	59.47
CA50	2	8.0	458	916	282000	86.4
CA80	3	8.0	1097	2134	692000	207.3
CA80	4	8.0	720	1440	456000	136.8
CA80	5	8.0	720	1440	456000	136.8
CA80	6	8.0	823	1646	516800	155.0
CA80	7	8.0	416	832	258400	77.5
CA80	8	8.0	437	874	271600	81.7
CA80	9	10.0	2	474	94800	28.3
CA80	10	10.0	2	513	102600	31.4
CA80	11	10.0	1	180	36000	10.9
CA80	12	10.0	1	180	36000	10.9
CA80	13	10.0	1	180	36000	10.9
CA80	14	10.0	2	719	143800	43.3
CA80	15	10.0	2	1134	226800	68.5
CA80	16	10.0	2	1134	226800	68.5
CA80	17	10.0	2	858	171600	51.5
CA80	18	10.0	1	252	50400	15.0
CA80	19	10.0	2	632	126400	37.5
CA80	20	10.0	2	178	35600	10.7
CA80	21	10.0	2	178	35600	10.7
CA80	22	10.0	2	675	135000	40.5

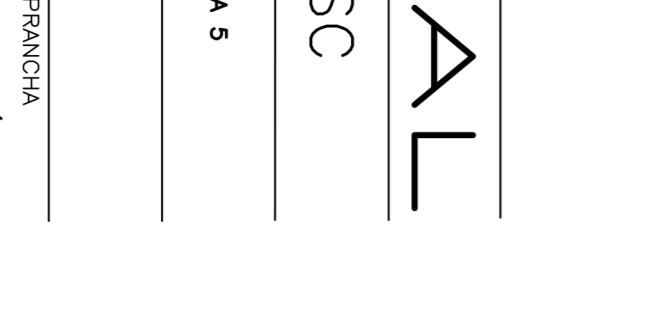
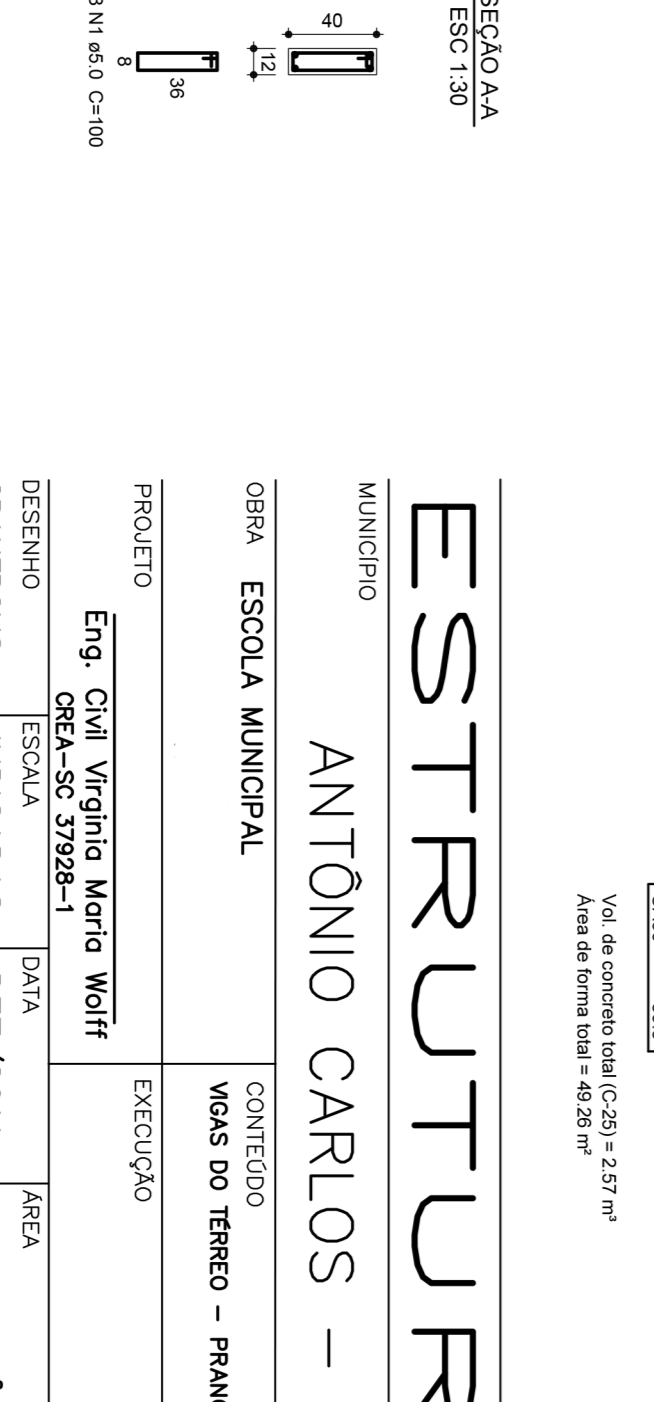
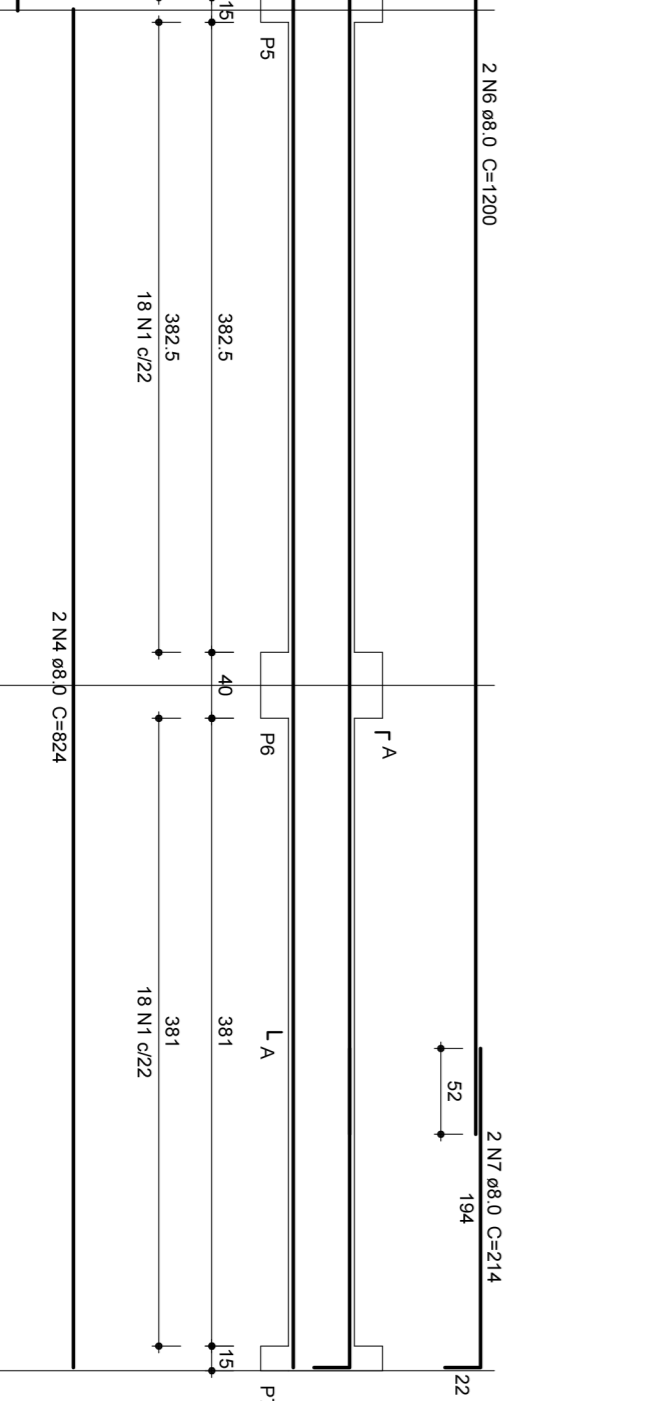
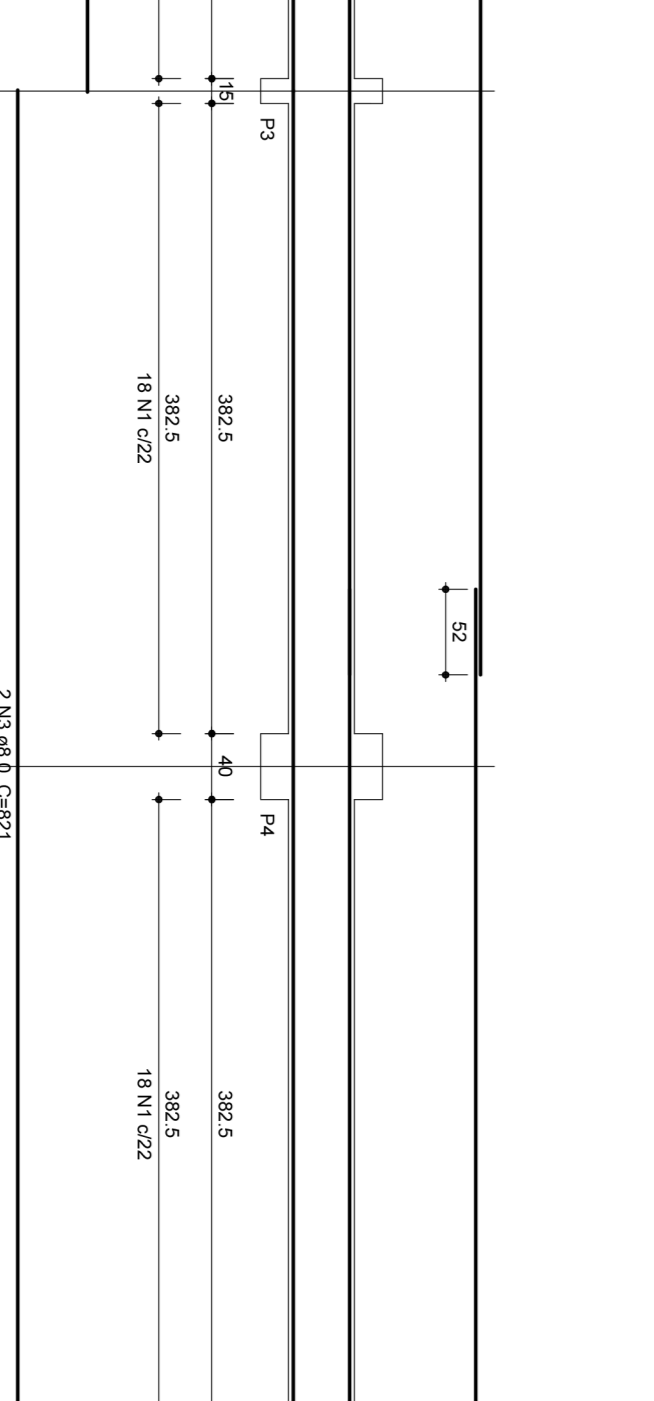
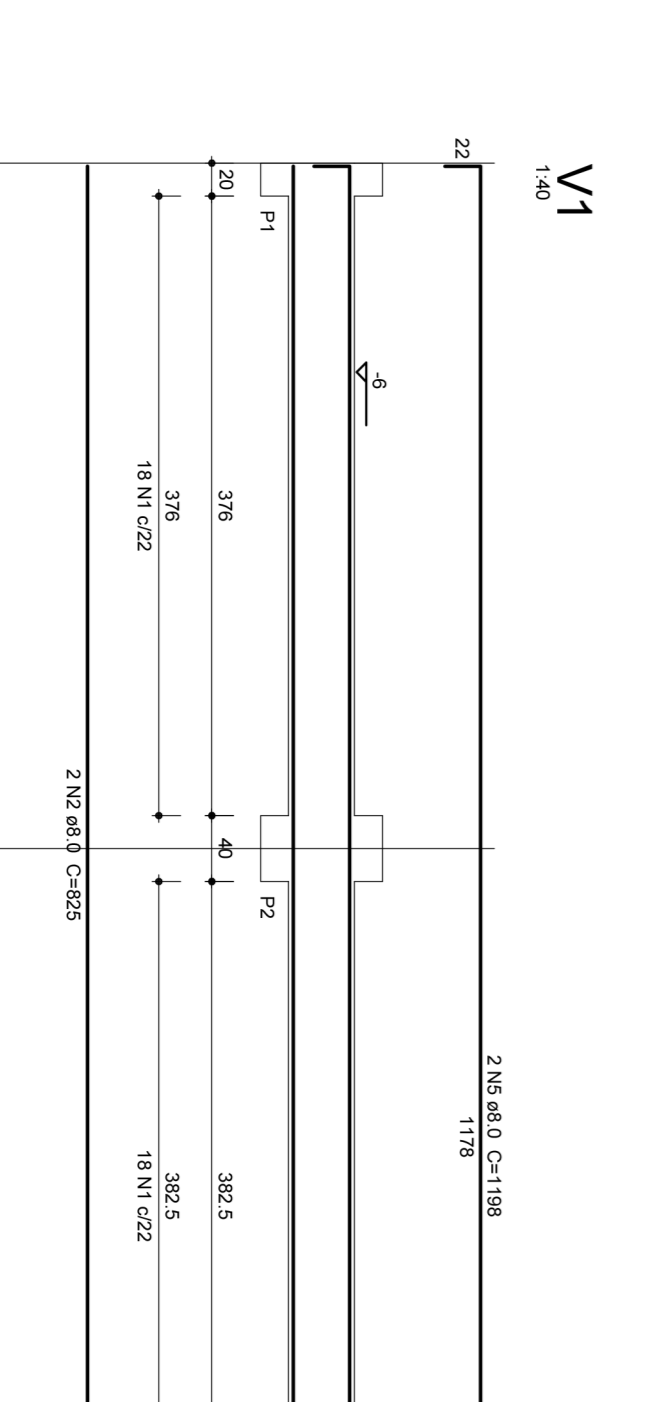
Vol de concreto total (C-29) = 2.58 m³
Área de forma total = 49.54 m²



Resumo do aço

ACO	N	DIAM	Q	UNIT	C/TOTAL	RESO - 10 %
CA80	1	5.0	233	466	147800	45.3
CA80	2	8.0	825	1650	517500	157.5
CA80	3	8.0	821	1642	512640	156.8
CA80	4	8.0	1528	3056	956800	292.0
CA80	5	8.0	1200	2400	744000	228.0
CA80	6	8.0	4	80	24000	7.3
CA80	7	8.0	2	40	12000	3.7
CA80	8	8.0	2	40	12000	3.7
CA80	9	8.0	1	20	6000	1.8
CA80	10	8.0	1	20	6000	1.8
CA80	11	8.0	1	20	6000	1.8
CA80	12	8.0	2	40	12000	3.7
CA80	13	8.0	2	40	12000	3.7
CA80	14	8.0	2	40	12000	3.7
CA80	15	8.0	2	40	12000	3.7
CA80	16	8.0	2	40	12000	3.7
CA80	17	8.0	2	40	12000	3.7
CA80	18	8.0	2	40	12000	3.7
CA80	19	8.0	2	40	12000	3.7
CA80	20	8.0	2	40	12000	3.7
CA80	21	8.0	2	40	12000	3.7
CA80	22	8.0	2	40	12000	3.7

Vol de concreto total (C-29) = 2.57 m³
Área de forma total = 49.26 m²



Resumo do aço

ACO	N	DIAM	Q	UNIT	C/TOTAL	RESO - 10 %
CA80	1	5.0	233	466	147800	45.3
CA80	2	8.0	825	1650	517500	157.5
CA80	3	8.0	821	1642	512640	156.8
CA80	4	8.0	1528	3056	956800	292.0
CA80	5	8.0	1200	2400	744000	228.0
CA80	6	8.0	4	80	24000	7.3
CA80	7	8.0	2	40	12000	3.7
CA80	8	8.0	2	40	12000	3.7
CA80	9	8.0	1	20	6000	1.8
CA80	10	8.0	1	20	6000	1.8
CA80	11	8.0	1	20	6000	1.8
CA80	12	8.0	2	40	12000	3.7
CA80	13	8.0	2	40	12000	3.7
CA80	14	8.0	2	40	12000	3.7
CA80	15	8.0	2	40	12000	3.7
CA80	16	8.0	2	40	12000	3.7
CA80	17	8.0	2	40	12000	3.7
CA80	18	8.0	2	40	12000	3.7
CA80	19	8.0	2	40	12000	3.7
CA80	20	8.0	2	40	12000	3.7
CA80	21	8.0	2	40	12000	3.7
CA80	22	8.0	2	40	12000	3.7

Vol de concreto total (C-29) = 2.57 m³
Área de forma total = 49.26 m²

ESTRUTURAL

ANTÔNIO CARLOS - SC

MUNICÍPIO

OPERAÇÃO: ESCOLA MUNICIPAL

CONTEÚDO: VIAS DO TERREO - PRANCHA 5

PROJETO: Eng. CIVIL Virginia Maria Wolff

CREA-SC 37928-1

EXECUÇÃO:

DESENHO: GRANFPOOLS

INDICADAS: DEZ/2011

ÁREA: 1301,00m²

PRANCHA: 12/26

ASSOCIAÇÃO DOS MUNICÍPIOS DA REGIÃO DA GRANDE FLORIANÓPOLIS "GRANFPOOLS"

ASSESSORIA DE ENGENHARIA E ARQUITETURA