

Vigas			
Nome	Seção (cm)	Elevação (cm)	Nível (cm)
V1	14x20	0	180
V2	14x20	0	180
V3	14x20	0	180
V4	14x20	0	180

Características dos materiais		
f _{ck} (kgf/cm ²)	f _{cd} (kgf/cm ²)	Abatimento (cm)
25	24,10	5,00

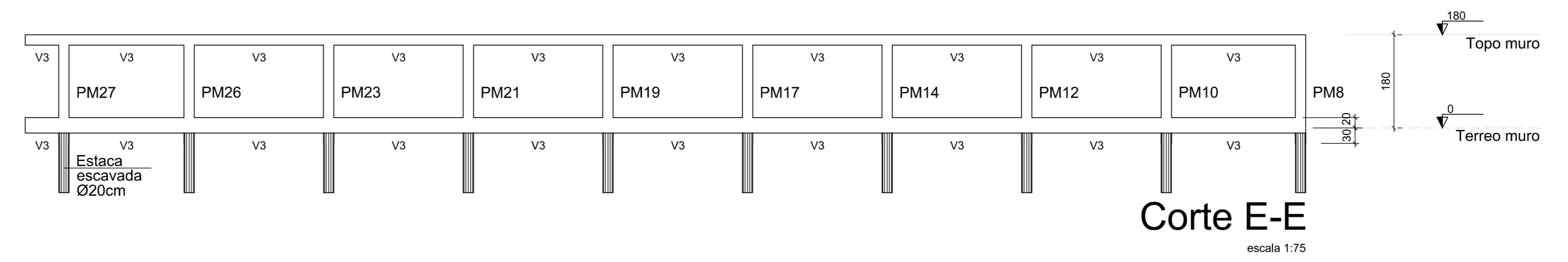
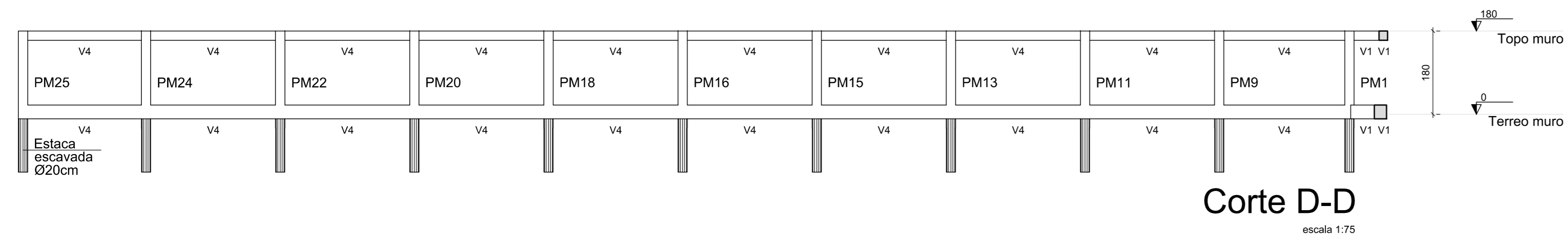
Dimensão máxima do agregado = 19 mm

Pilares			
Nome	Seção (cm)	Elevação (cm)	Nível (cm)
PM1	20x20	0	180
PM2	20x20	0	180
PM3	20x20	0	180
PM4	20x20	0	180
PM5	20x20	0	180
PM6	20x20	0	180
PM7	20x20	0	180
PM8	20x20	0	180
PM9	20x20	0	180
PM10	20x20	0	180
PM11	20x20	0	180
PM12	20x20	0	180
PM13	20x20	0	180
PM14	20x20	0	180
PM15	20x20	0	180
PM16	20x20	0	180
PM17	20x20	0	180
PM18	20x20	0	180
PM19	20x20	0	180
PM20	20x20	0	180
PM21	20x20	0	180
PM22	20x20	0	180
PM23	20x20	0	180
PM24	20x20	0	180
PM25	20x20	0	180
PM26	20x20	0	180
PM27	20x20	0	180

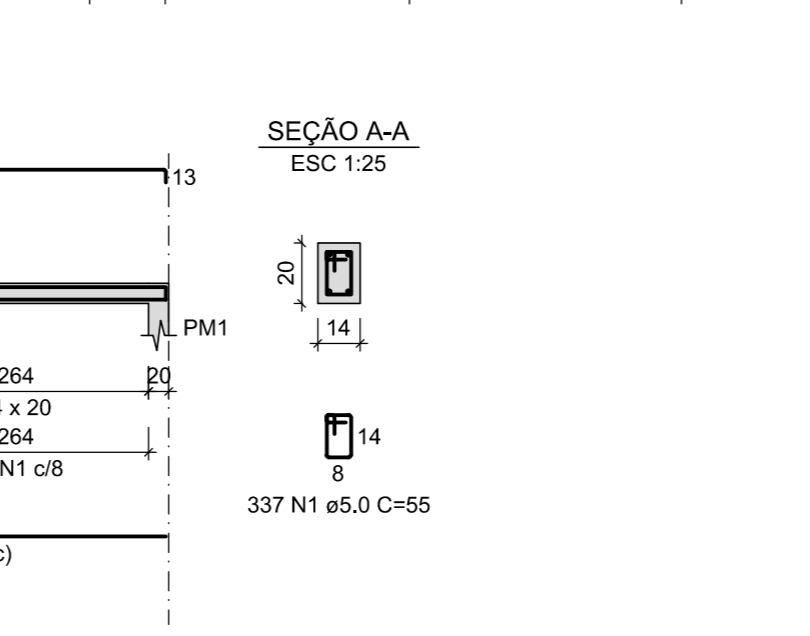
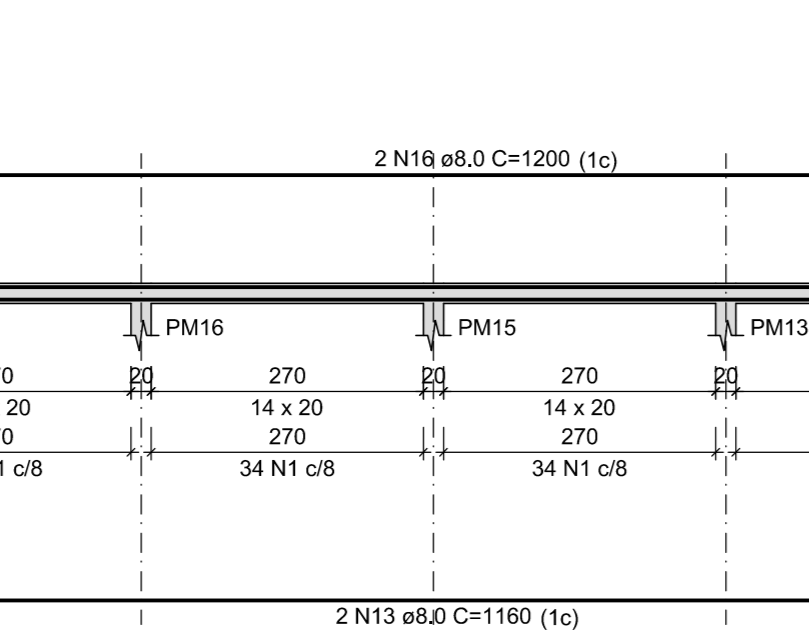
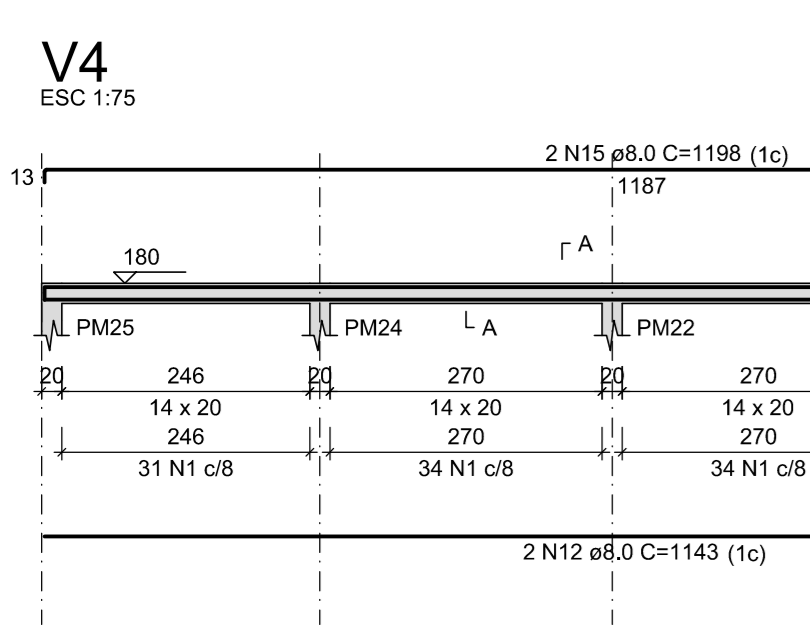
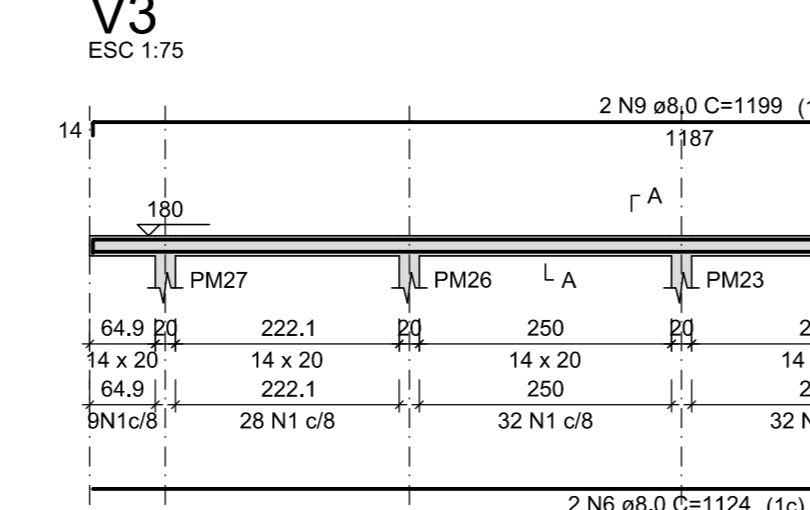
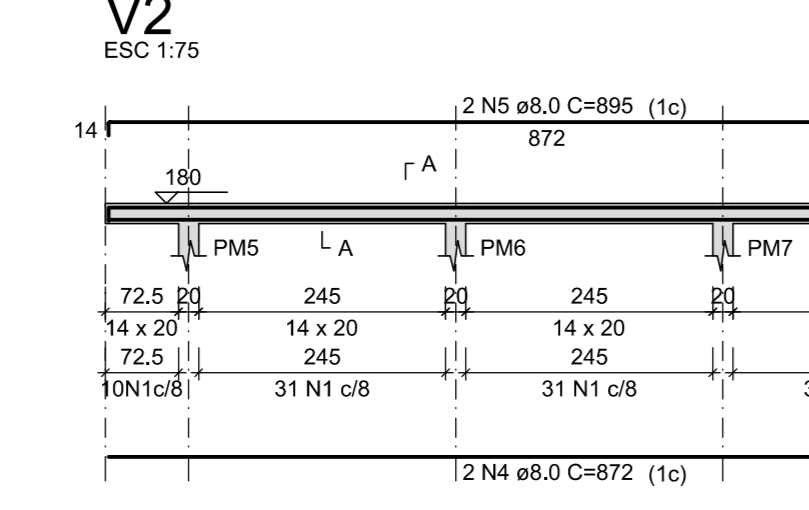
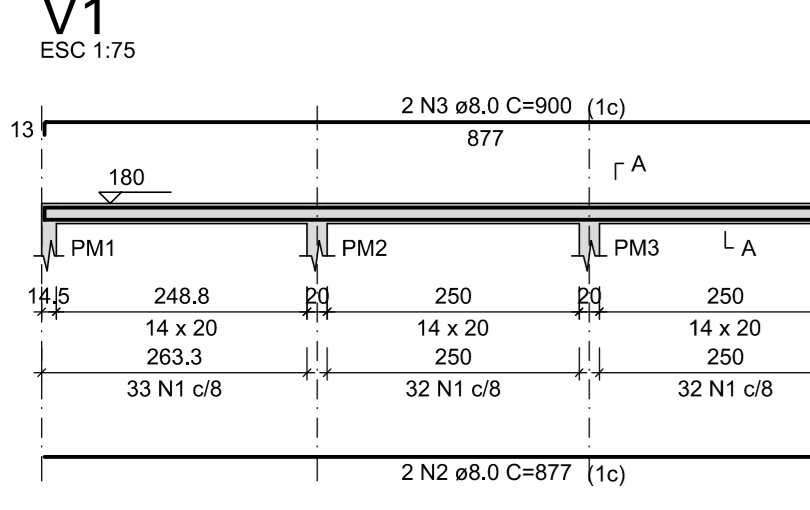
Legenda dos pilares
 [Symbol] Pilar que morre

Legenda das vigas e paredes
 [Symbol] Viga

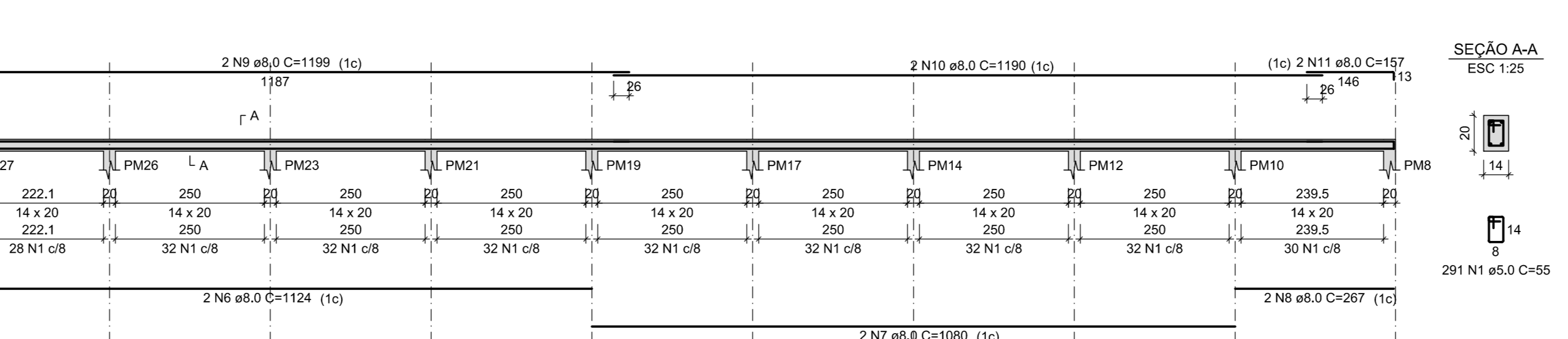
Forma do pavimento Topo muro (Nível 180)
 escala 1:75



VIGAS DO TOPO DO MURO



Corte D-D
 escala 1:75



RELAÇÃO DO AÇO

AÇO	N	DIAM (mm)	QUANT	C.LINHT (cm)	C.TOTAL (cm)
CA80	1	8,0	835	55	45925
CA80	2	8,0	2	977	1754
CA80	3	8,0	2	900	1800
CA80	4	8,0	2	972	1744
CA80	5	8,0	2	895	1790
CA80	6	8,0	2	1124	2248
CA80	7	8,0	2	1080	2160
CA80	8	8,0	2	287	554
CA80	9	8,0	2	1199	2398
CA80	10	8,0	2	1190	2380
CA80	11	8,0	2	187	374
CA80	12	8,0	2	1143	2286
CA80	13	8,0	2	1160	2320
CA80	14	8,0	2	591	1182
CA80	15	8,0	2	1198	2396
CA80	16	8,0	2	1200	2400
CA80	17	8,0	2	560	1120

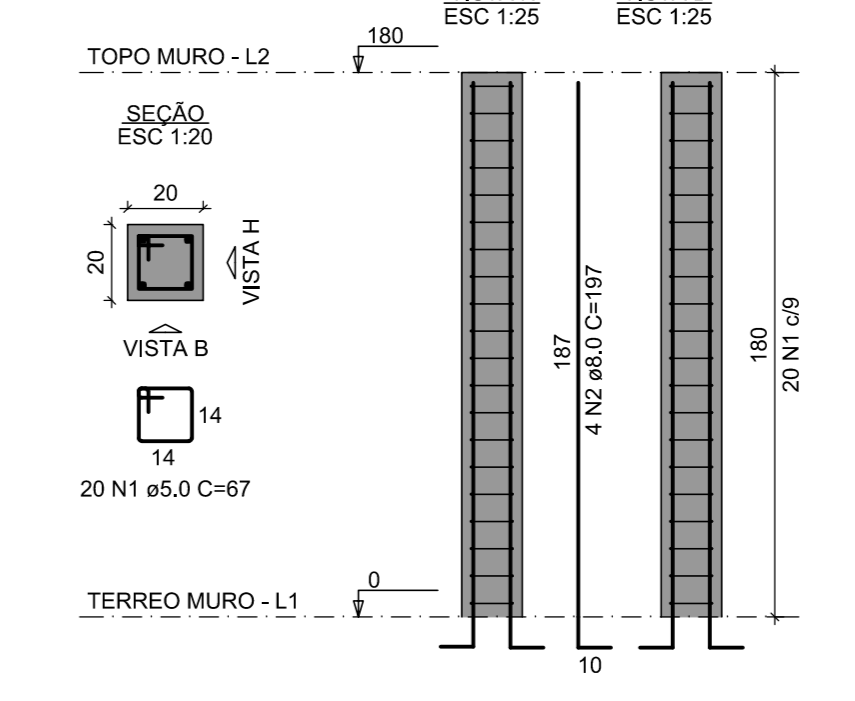
RESUMO DO AÇO

AÇO	DIAM (mm)	C.TOTAL (m)	PESO + 0% (kg)
CA80	8,0	268,1	113,7
CA80	5,0	456,3	70,8
PESO TOTAL (kg)			184,5
CA80	113,7		
CA80	70,8		

Volume de concreto (C-25) = 2,00 m³
 Área de forma = 38,48 m²

PILARES

PM1=PM2=PM3=PM4=PM5=
 =PM6=PM7=PM8=PM9=PM10=
 =PM11=PM12=PM13=PM14=
 =PM15=PM16=PM17=PM18=
 =PM19=PM20=PM21=PM22=
 =PM23=PM24=PM25=PM26=
 =PM27



RELAÇÃO DO AÇO

AÇO	N	DIAM (mm)	QUANT	C.LINHT (cm)	C.TOTAL (cm)
CA80	1	8,0	540	67	36190
CA80	2	8,0	198	197	21276
RESUMO DO AÇO					
AÇO	DIAM (mm)	C.TOTAL (m)	PESO + 0% (kg)		
CA80	8,0	212,8	83,4		
CA80	5,0	361,8	55,8		
PESO TOTAL (kg)					139,2
CA80	75,4				
CA80	55,8				

Volume de concreto (C-25) = 1,94 m³
 Área de forma = 38,88 m²

DATA DA ÚLTIMA ALTERAÇÃO	DISCRIMINAÇÃO DA ALTERAÇÃO	RESPONSÁVEL

CARIMBOS E APROVAÇÕES

DESENHO: Virginia
 ESCALA: Indicada
 DATA: DEZ/2021
 ÁREA: 71,20 m²
 FRANÇA: 10

ESTRUTURAL

MUNICÍPIO: ANTÔNIO CARLOS - SC

OBRA: REFORMA ESCOLA - LOURO - NÚCLEO MUNICIPAL PROF. XENIA GODEBERT

PROJETO: KREMER

Eng. Civil Virginia Maria Wolff Junckes

CONTEÚDO: MURO FORMAS E ARMADOURAS DAS VIGAS E PILARES DO TOPO DO MURO

EXECUÇÃO: [Signature]

ASSOCIAÇÃO DOS MUNICÍPIOS DA REGIÃO DA GRANDE FLORIANÓPOLIS "GRANFPOLIS" ASSESSORIA DE ENGENHARIA E ARQUITETURA