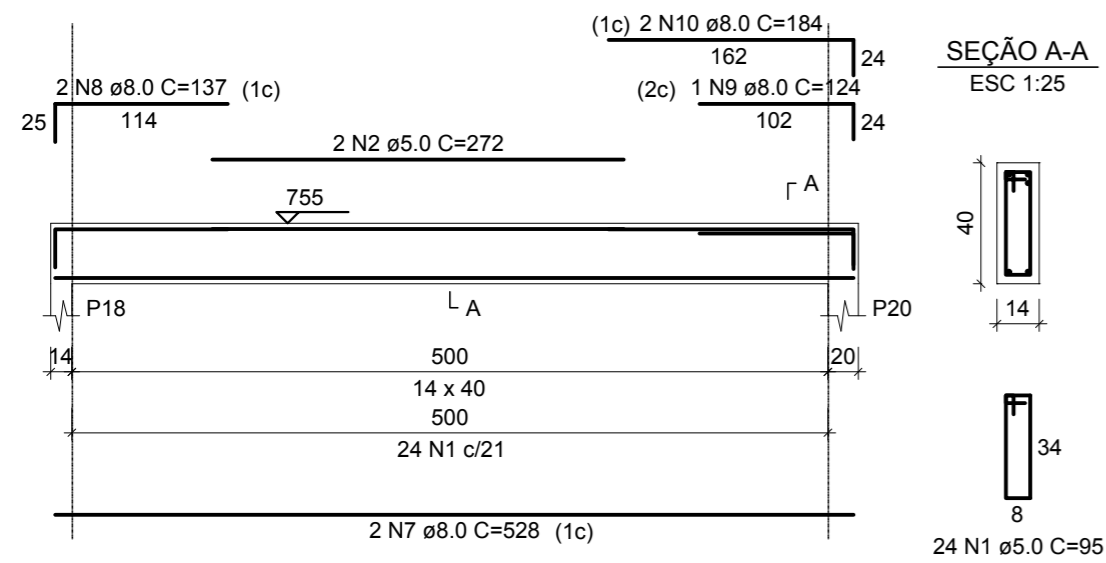


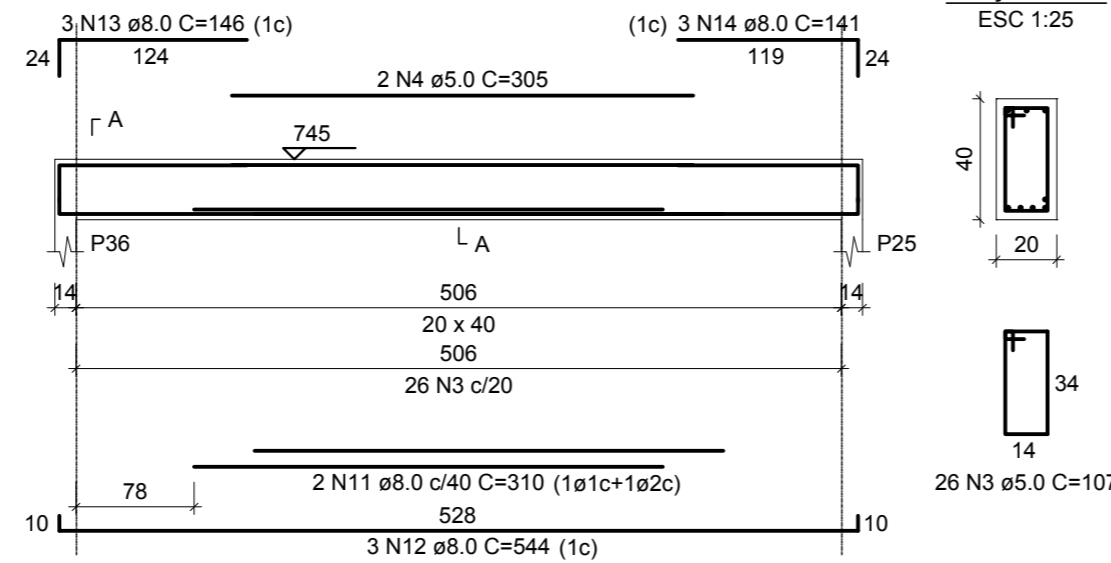
V1 (14 x 40)

ESC 1:50



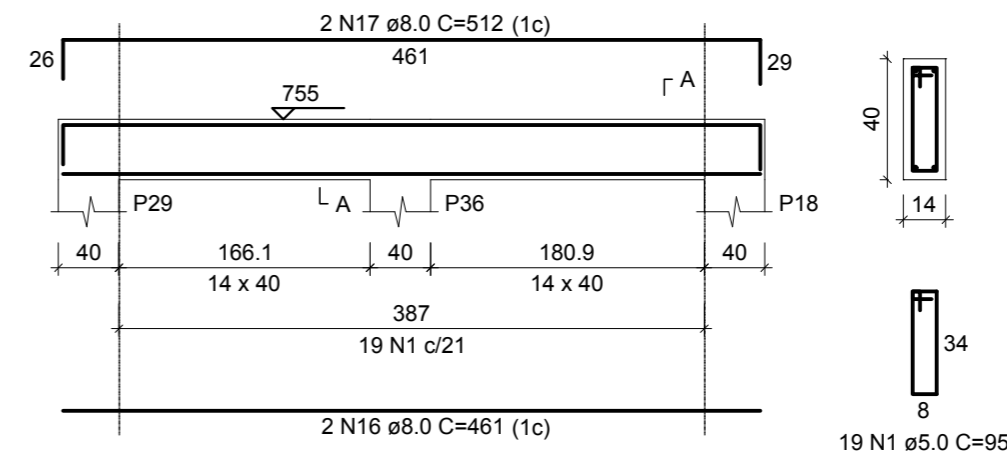
V2 (20 x 40)

ESC 1:50



V4 (14 x 40)

ESC 1:50

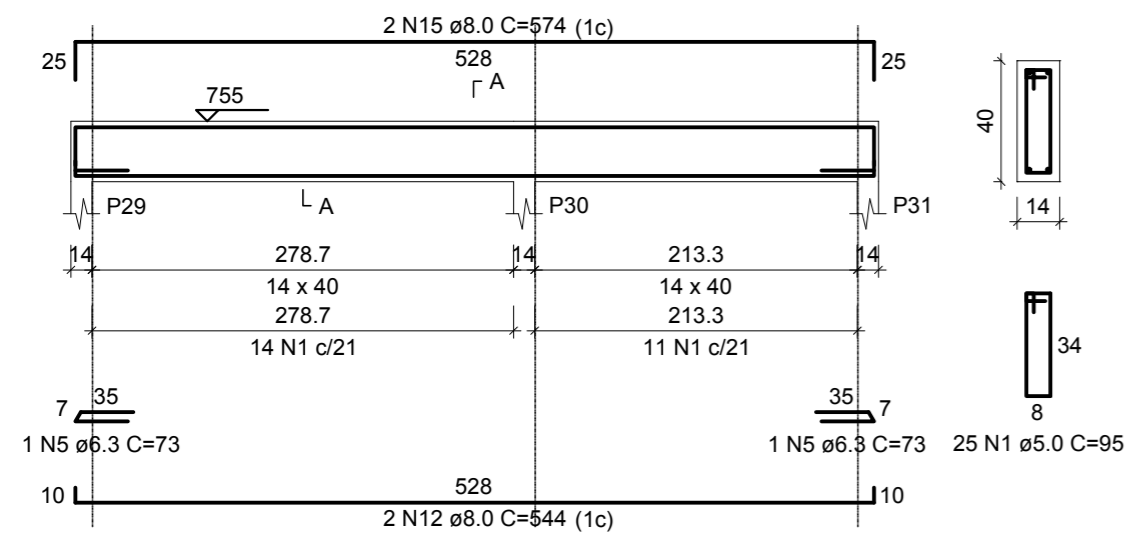


RELAÇÃO DO AÇO

AÇO	N	DIAM (mm)	QUANT	C.UNIT (cm)	C.TOTAL (cm)
CA60	1	5.0	111	95	10545
	2	5.0	2	272	544
	3	5.0	26	107	2782
	4	5.0	2	305	610
	5	6.3	3	73	219
	6	6.3	4	240	960
	7	8.0	2	528	1056
	8	8.0	2	137	274
	9	8.0	1	124	124
	10	8.0	2	184	368
	11	8.0	2	310	620
	12	8.0	5	544	2720
	13	8.0	3	146	438
	14	8.0	3	141	423
	15	8.0	2	574	1148
	16	8.0	4	461	1844
	17	8.0	2	512	1024
	18	8.0	2	507	1014
	19	8.0	2	309	618
	20	8.0	2	347	694
	21	8.0	2	248	496
	22	8.0	1	269	269
	23	8.0	2	272	544

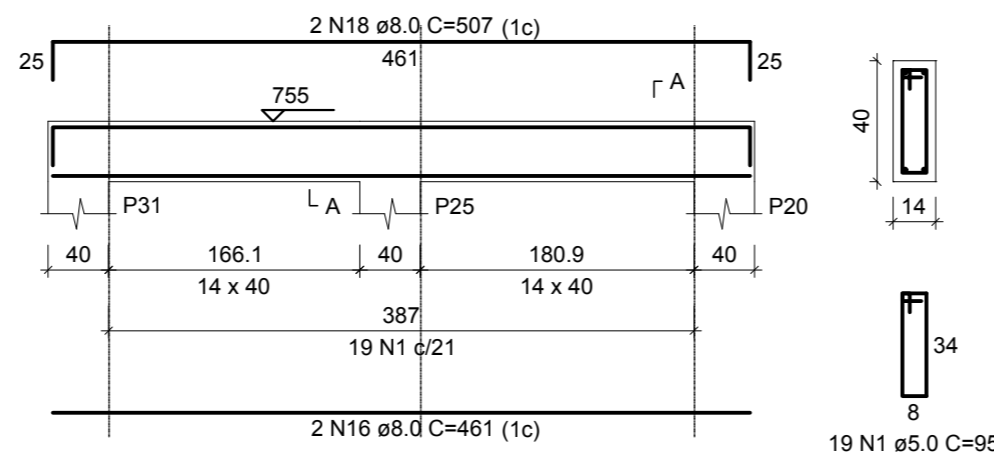
V3 (14 x 40)

ESC 1:50



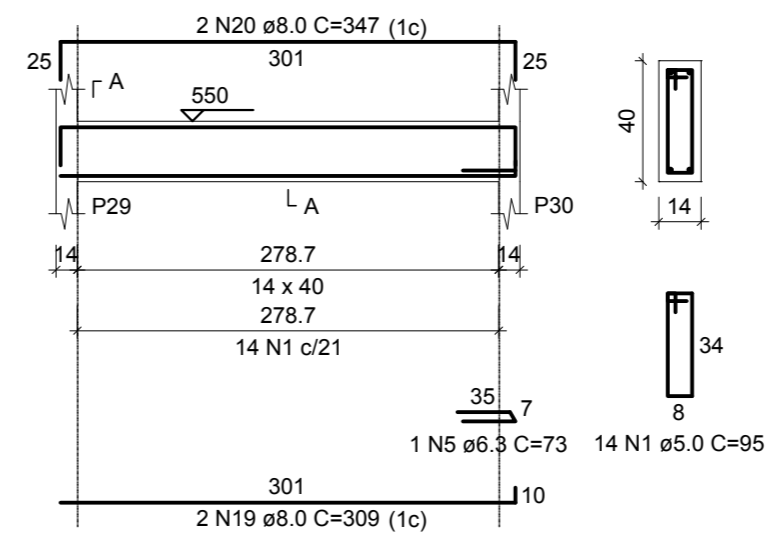
V5 (14 x 40)

ESC 1:50



V6 (14 x 40)

ESC 1:50



RESUMO DO AÇO

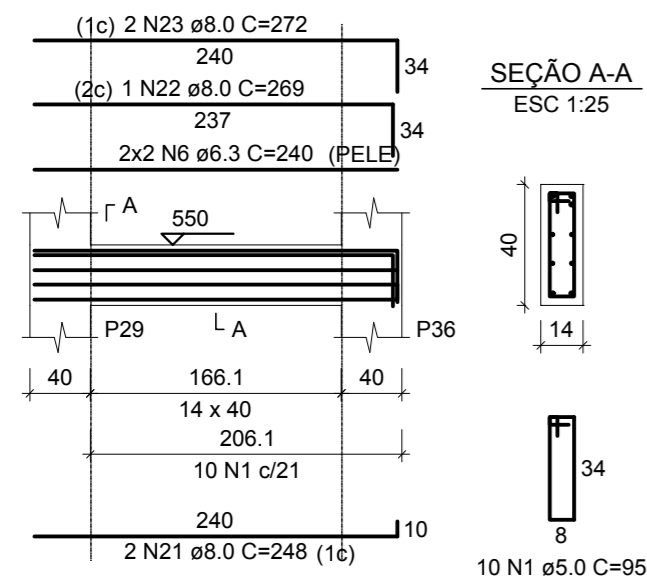
AÇO	DIAM (mm)	C.TOTAL (m)	PESO + 0% (kg)
CA50	6.3	11.8	2.9
CA60	8.0	136.7	54
CA60	5.0	144.8	22.3

PESO TOTAL (kg)
CA50 56.8
CA60 22.3

Volume de concreto (C-25) = 1.86 m³
Área de forma = 29.36 m²

V7 (14 x 40)

ESC 1:50



ESTRUTURAL

MUNICÍPIO

ANTÔNIO CARLOS - SC

OBRA
CASA DO AGRICULTOR

CONTEÚDO
VIGAS DO TETO DA CAIXA DÁGUA - FORMAS E ARMADURAS

PROJETO

EXECUÇÃO

Eng.Civil Virginia Maria Wolff

CREA-SC.37928-1

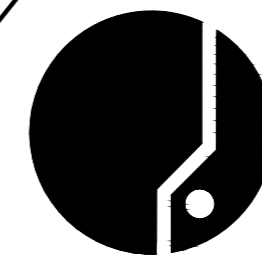
DESENHO
GRANFPOLIS

ESCALA
INDICADAS

DATA
MAI/2019

ÁREA
287,50 m²

PRANCHA
18



ASSOCIAÇÃO DOS MUNICÍPIOS
DA REGIÃO DA GRANDE FLORIANÓPOLIS
"GRANFPOLIS"
ASSESSORIA DE ENGENHARIA E ARQUITETURA