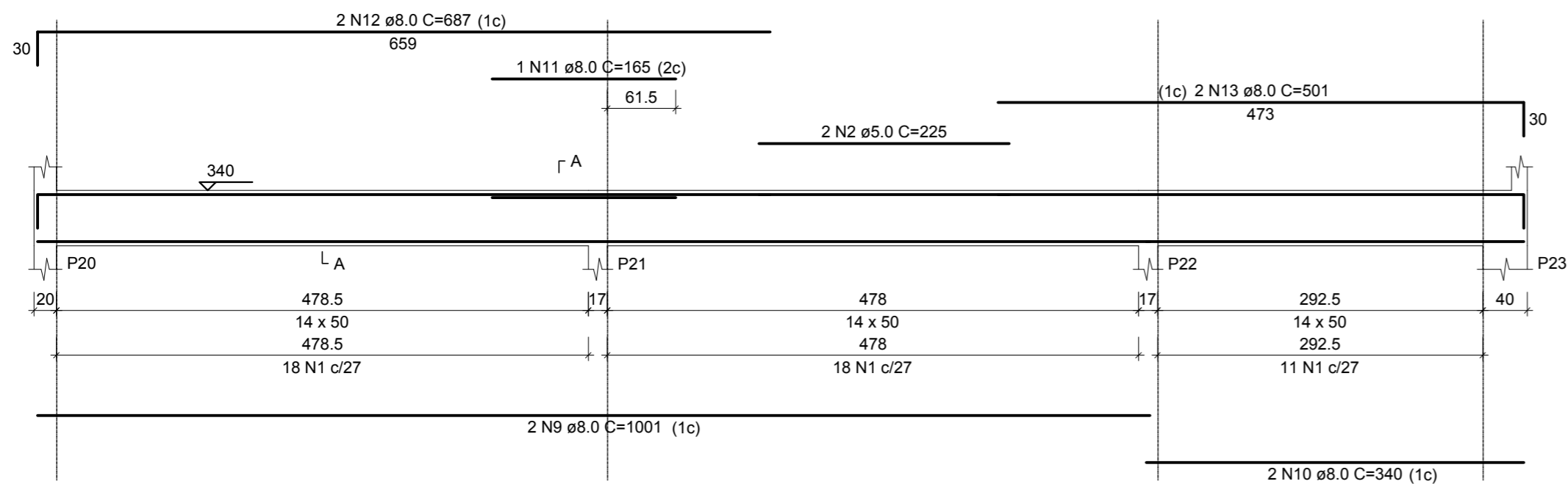


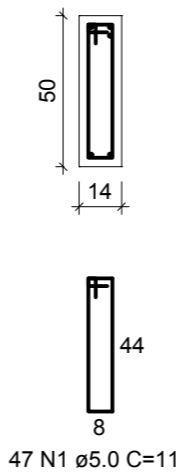
V6 (14 x 50)

ESC 1:50



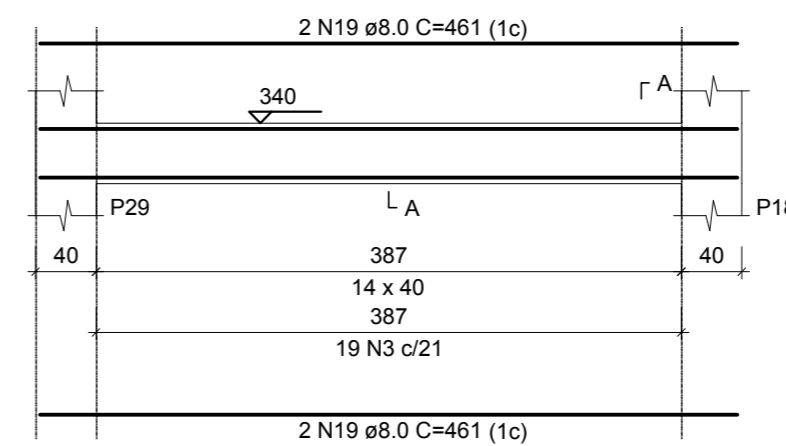
SEÇÃO A-A

ESC 1:25



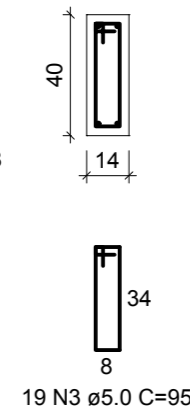
V10 (14 x 40)

ESC 1:50



SEÇÃO A-A

ESC 1:25



RELAÇÃO DO AÇO

| AÇO | N | DIAM (mm) | QUANT | C.UNIT (cm) | C.TOTAL (cm) |
|------|----|-----------|-------|-------------|--------------|
| CA60 | 1 | 5.0 | 259 | 115 | 29785 |
| | 2 | 5.0 | 2 | 225 | 450 |
| | 3 | 5.0 | 51 | 95 | 4845 |
| CA50 | 4 | 6.3 | 6 | 1196 | 7176 |
| | 5 | 6.3 | 6 | 192 | 1152 |
| | 6 | 6.3 | 1 | 73 | 73 |
| | 7 | 6.3 | 6 | 846 | 5076 |
| | 8 | 6.3 | 2 | 125 | 250 |
| | 9 | 8.0 | 2 | 1001 | 2002 |
| | 10 | 8.0 | 2 | 340 | 680 |
| | 11 | 8.0 | 1 | 165 | 165 |
| | 12 | 8.0 | 2 | 687 | 1374 |
| | 13 | 8.0 | 2 | 501 | 1002 |
| | 14 | 8.0 | 1 | 289 | 289 |
| | 15 | 8.0 | 2 | 500 | 1000 |
| | 16 | 8.0 | 2 | 348 | 696 |
| | 17 | 8.0 | 1 | 527 | 527 |
| | 18 | 8.0 | 2 | 854 | 1708 |
| | 19 | 8.0 | 4 | 461 | 1844 |
| | 20 | 8.0 | 1 | 240 | 240 |
| | 21 | 8.0 | 4 | 384 | 1536 |
| | 22 | 8.0 | 1 | 235 | 235 |
| | 23 | 8.0 | 1 | 209 | 209 |
| | 24 | 8.0 | 2 | 426 | 852 |
| | 25 | 10.0 | 2 | 498 | 996 |
| | 26 | 10.0 | 1 | 190 | 190 |
| | 27 | 10.0 | 2 | 1198 | 2396 |
| | 28 | 10.0 | 2 | 263 | 526 |
| | 29 | 10.0 | 1 | 152 | 152 |
| | 30 | 10.0 | 1 | 280 | 280 |
| | 31 | 10.0 | 1 | 629 | 629 |
| | 32 | 10.0 | 2 | 846 | 1692 |
| | 33 | 10.0 | 2 | 426 | 852 |

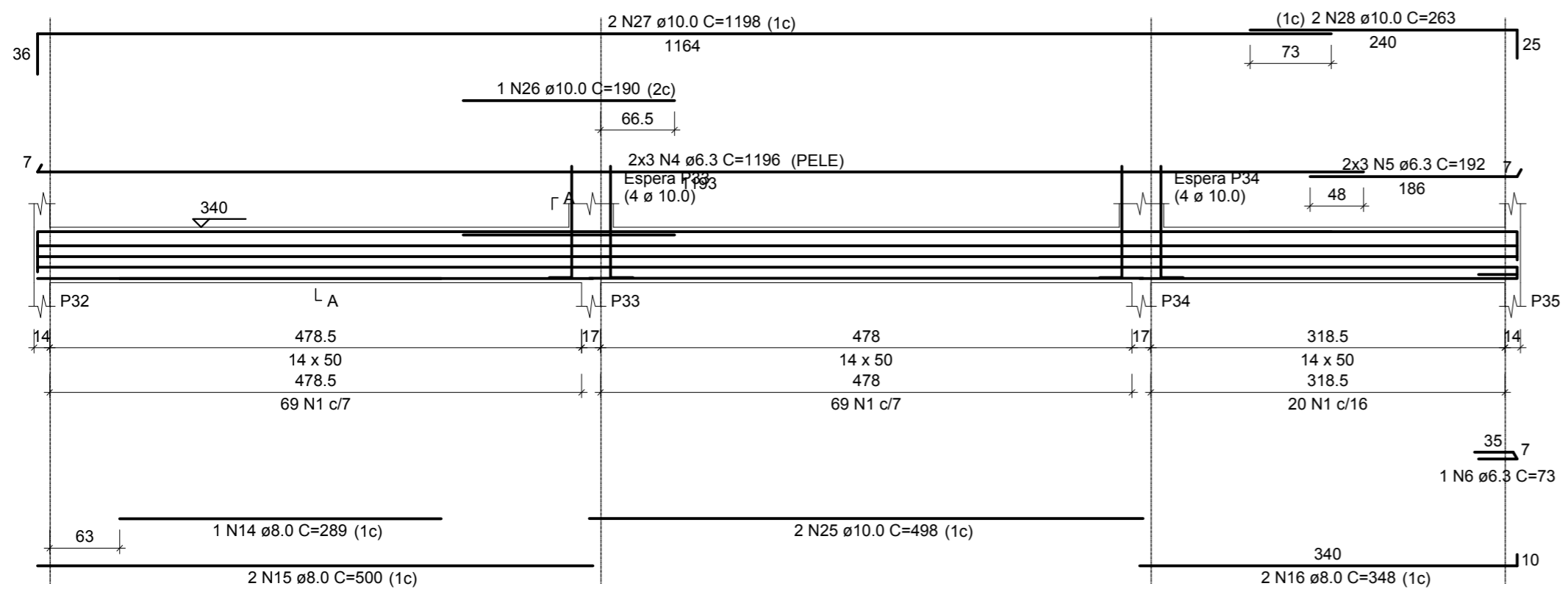
RESUMO DO AÇO

| AÇO | DIAM (mm) | C.TOTAL (m) | PESO + 0% (kg) |
|------------------------|-----------|-------------|----------------|
| CA50 | 6.3 | 137.3 | 33.6 |
| | 8.0 | 143.6 | 56.7 |
| | 10.0 | 77.1 | 47.6 |
| CA60 | 5.0 | 350.8 | 54.1 |
| PESO TOTAL (kg) | | | |
| CA50 | | 137.8 | |
| CA60 | | 54.1 | |

Volume de concreto (C-25) = 3.16 m³
Área de forma = 51.84 m²

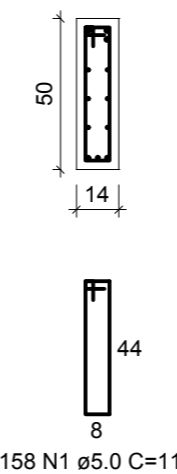
V8 (14 x 50)

ESC 1:50



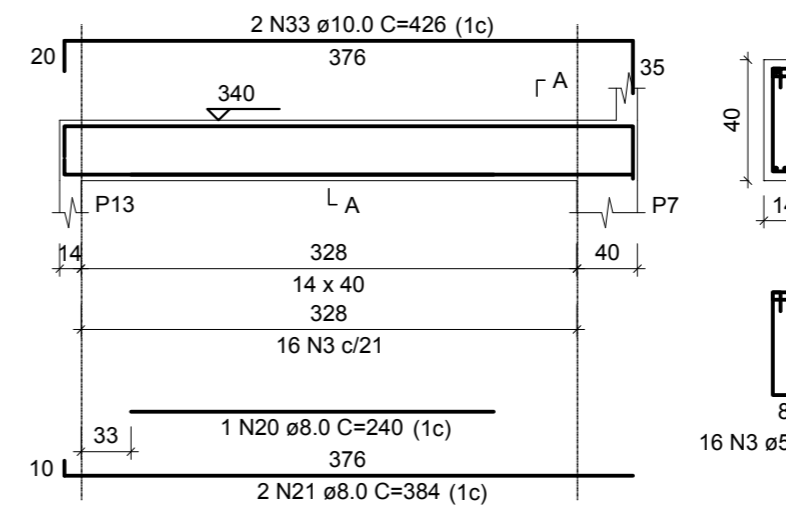
SEÇÃO A-A

ESC 1:25



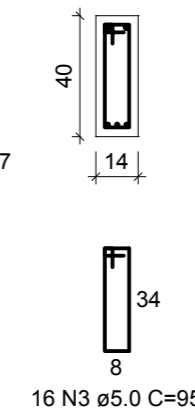
V14 (14 x 40)

ESC 1:50



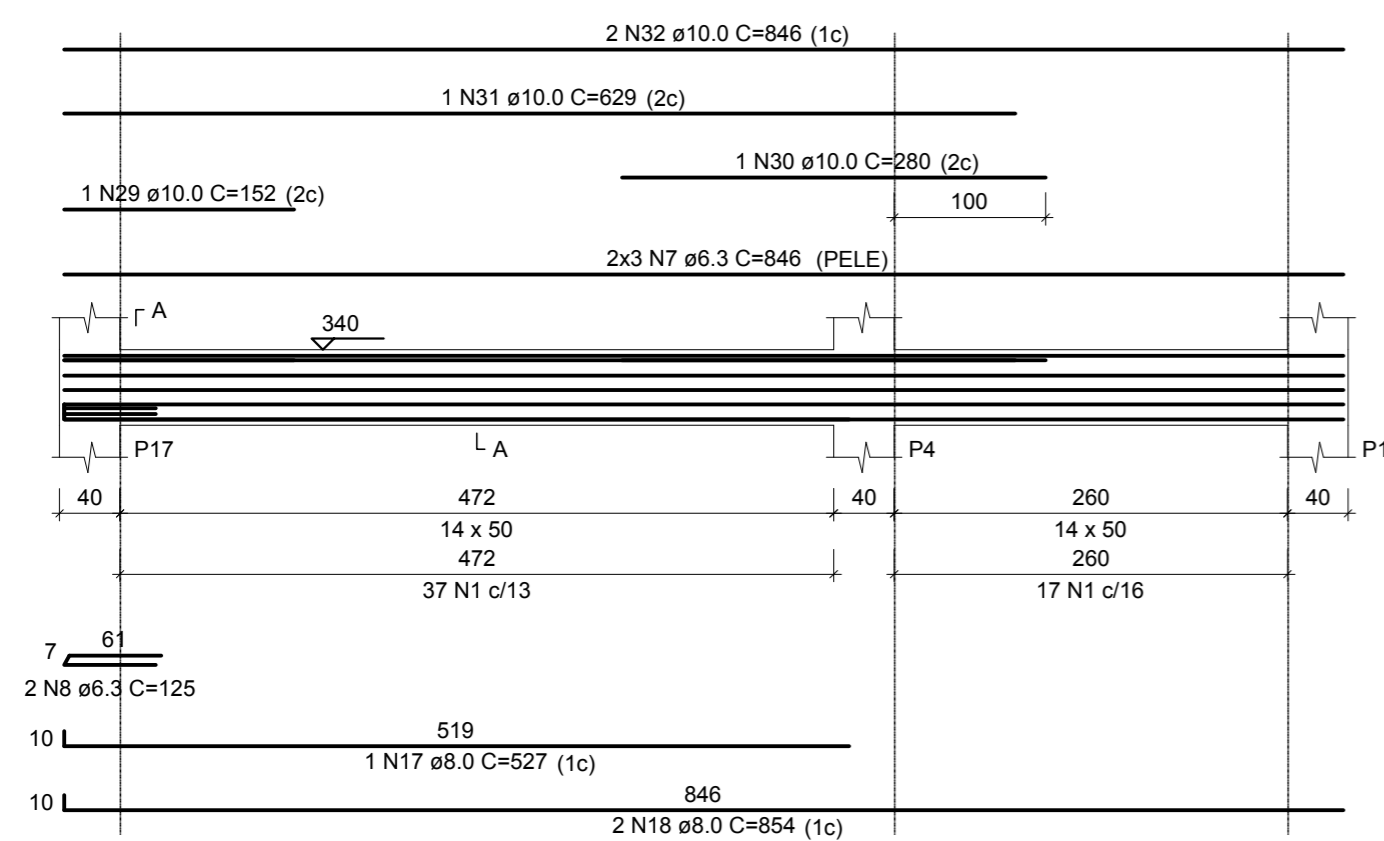
SEÇÃO A-A

ESC 1:25



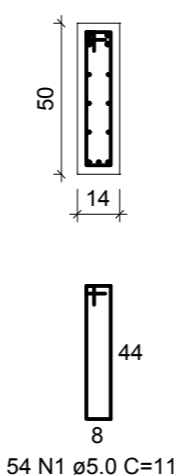
V9 (14 x 50)

ESC 1:50



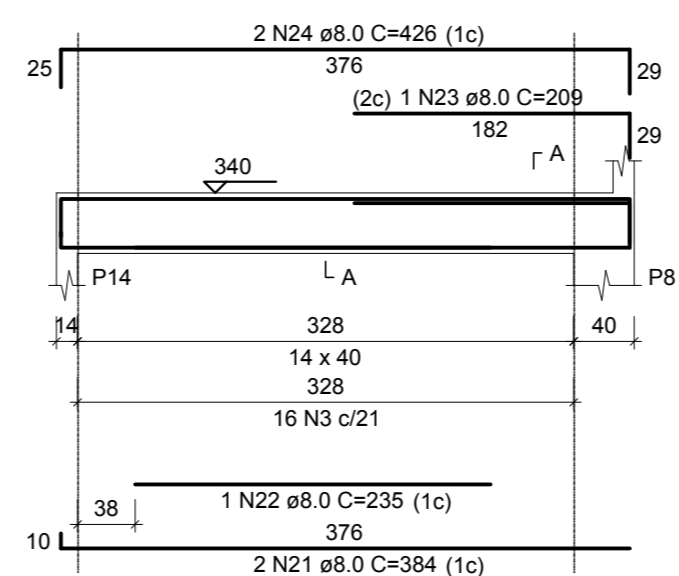
SEÇÃO A-A

ESC 1:25



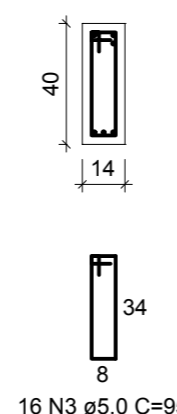
V16 (14 x 40)

ESC 1:50



SEÇÃO A-A

ESC 1:25



ESTRUTURAL

MUNICÍPIO

ANTÔNIO CARLOS - SC

OBRA
CASA DO AGRICULTOR

CONTEÚDO
VIGAS DA COBERTURA - FORMAS E ARMADURAS
PRANCHA 2

PROJETO

EXECUÇÃO

Eng.Civil Virginia Maria Wolff

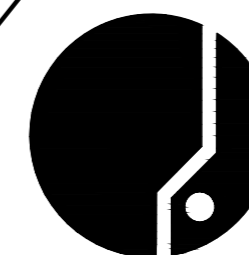
DESENHO
GRANFPOLIS

ESCALA
INDICADAS

DATA
MAI/2019

ÁREA
287,50 m²

PRANCHA
15



ASSOCIAÇÃO DOS MUNICÍPIOS
DA REGIÃO DA GRANDE FLORIANÓPOLIS
"GRANFPOLIS"
ASSESSORIA DE ENGENHARIA E ARQUITETURA