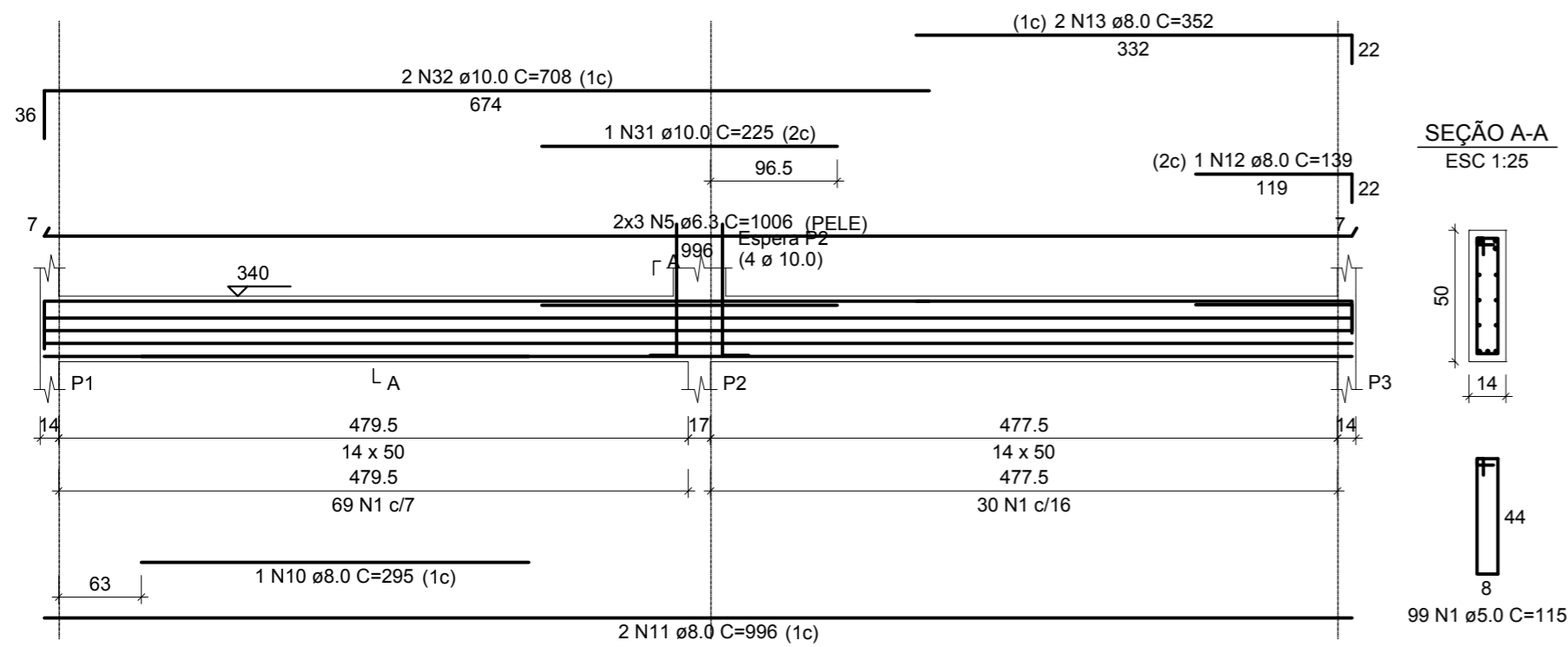


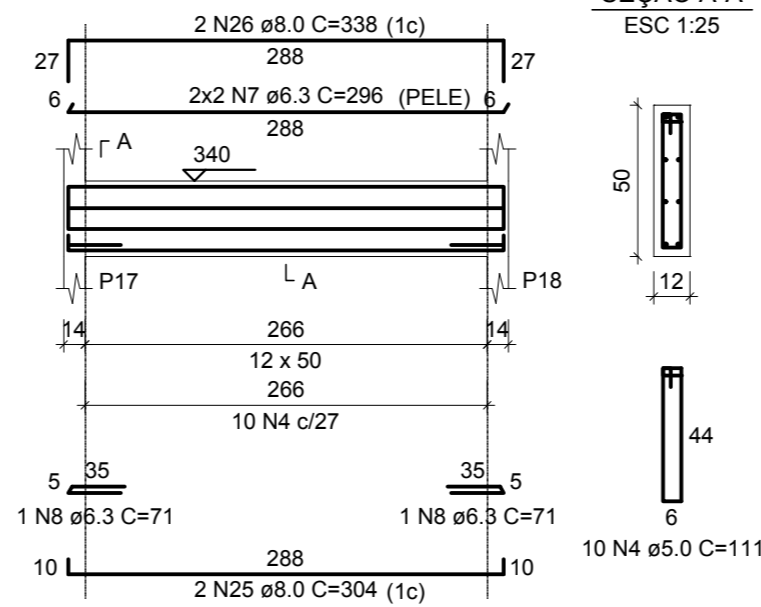
### V1 (14 x 50)

ESC 1:50



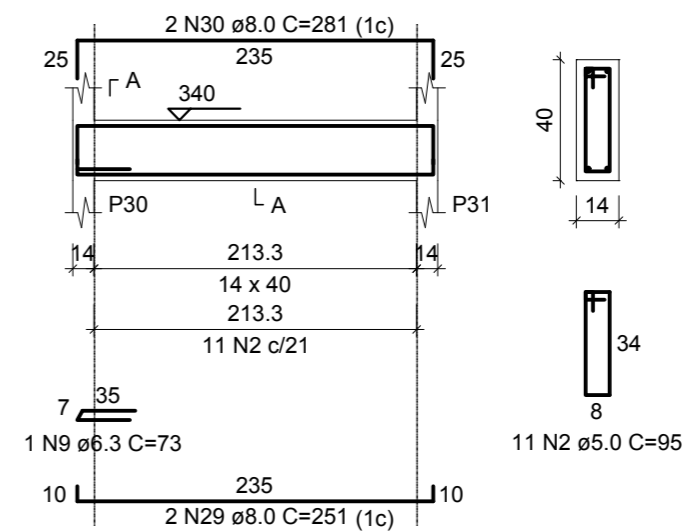
### V4 (12 x 50)

ESC 1:50



### V7 (14 x 40)

ESC 1:50

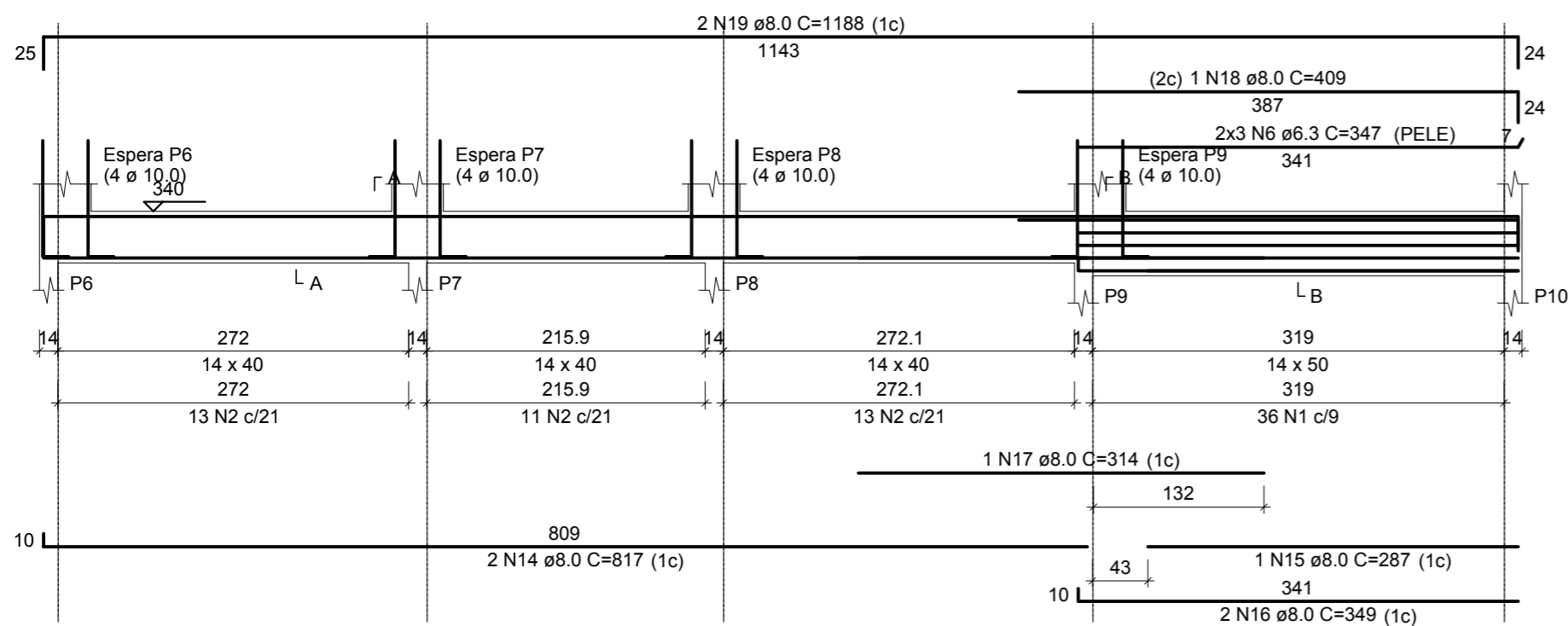


#### RELAÇÃO DO AÇO

AÇO	N	DIAM (mm)	QUANT	C.UNIT (cm)	C.TOTAL (cm)
CA60	1	5.0	193	115	22195
	2	5.0	71	95	6745
	3	5.0	2	263	526
	4	5.0	10	111	1110
CA50	5	6.3	6	1006	6036
	6	6.3	6	347	2082
	7	6.3	4	296	1184
	8	6.3	2	71	142
	9	6.3	1	73	73
	10	8.0	1	295	295
	11	8.0	2	996	1992
	12	8.0	1	139	139
	13	8.0	2	352	704
	14	8.0	2	817	1634
	15	8.0	1	287	287
	16	8.0	2	349	698
	17	8.0	1	314	314
	18	8.0	1	409	409
	19	8.0	2	1188	2376
	20	8.0	2	1058	2116
	21	8.0	2	640	1280
	22	8.0	2	149	298
	23	8.0	2	1154	2308
	24	8.0	2	209	418
	25	8.0	2	304	608
	26	8.0	2	338	676
	27	8.0	2	536	1072
	28	8.0	2	576	1152
	29	8.0	2	251	502
	30	8.0	2	281	562
	31	10.0	1	225	225
	32	10.0	2	708	1416

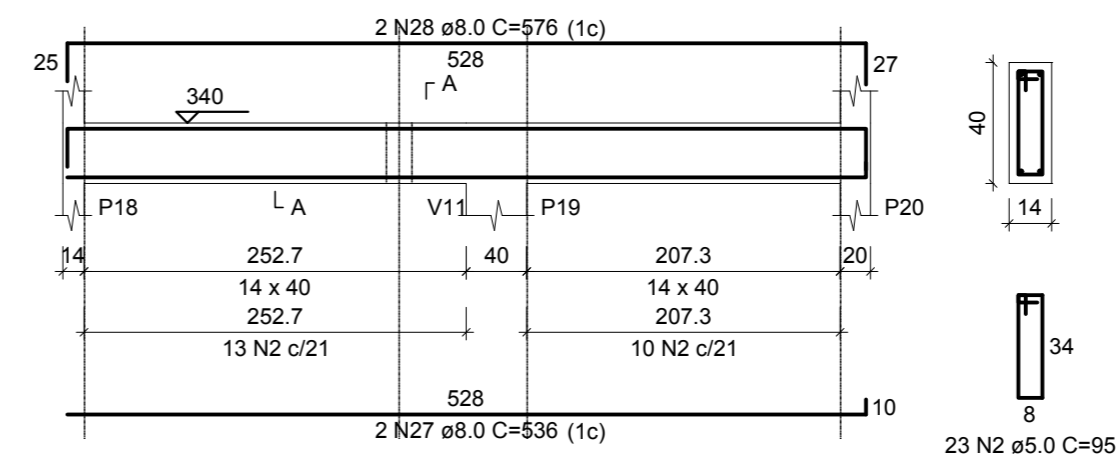
### V2 (var)

ESC 1:50



### V5 (14 x 40)

ESC 1:50



#### RESUMO DO AÇO

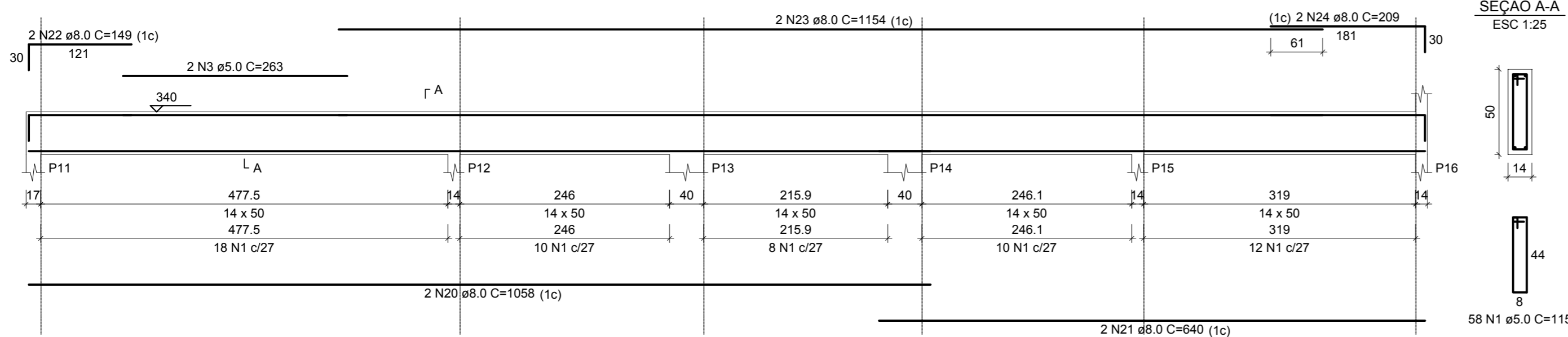
AÇO	DIAM (mm)	C.TOTAL (m)	PESO + 0% (kg)
CA50	6.3	95.2	23.3
	8.0	198.4	78.3
CA60	10.0	16.4	10.1
	5.0	305.8	47.1

PESO TOTAL (kg)	
CA50	111.7
CA60	47.1

Volume de concreto (C-25) = 3.15 m³  
 Área de forma = 52.22 m²

### V3 (14 x 50)

ESC 1:50



# ESTRUTURAL

MUNICÍPIO

ANTÔNIO CARLOS - SC

OBRA  
CASA DO AGRICULTOR

CONTEÚDO  
VIGAS DA COBERTURA - FORMAS E ARMADURAS PRANCHA 1

PROJETO

EXECUÇÃO

Eng.Civil Virginia Maria Wolff

CREA-SC 37928-1

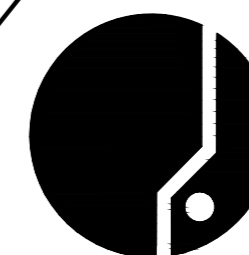
DESENHO  
GRANFPOLIS

ESCALA  
INDICADAS

DATA  
MAI/2019

ÁREA  
287,50 m²

PRANCHA  
14



ASSOCIAÇÃO DOS MUNICÍPIOS  
DA REGIÃO DA GRANDE FLORIANÓPOLIS  
"GRANFPOLIS"  
ASSESSORIA DE ENGENHARIA E ARQUITETURA