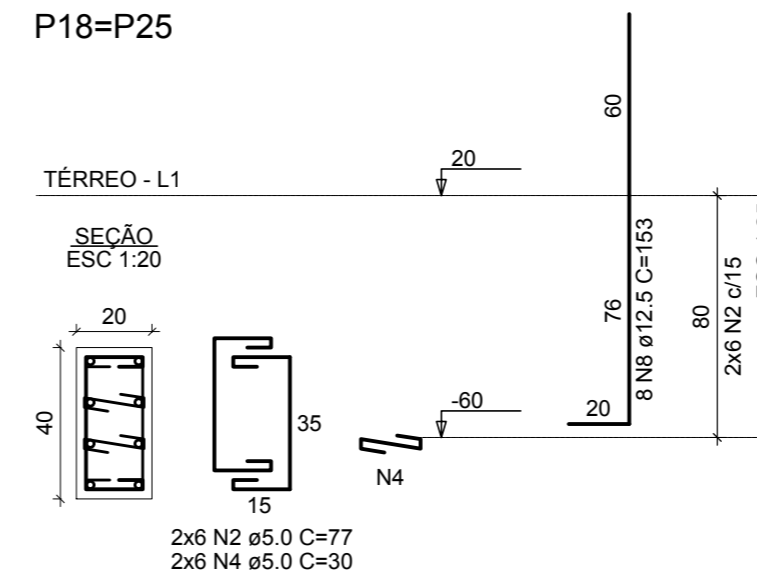
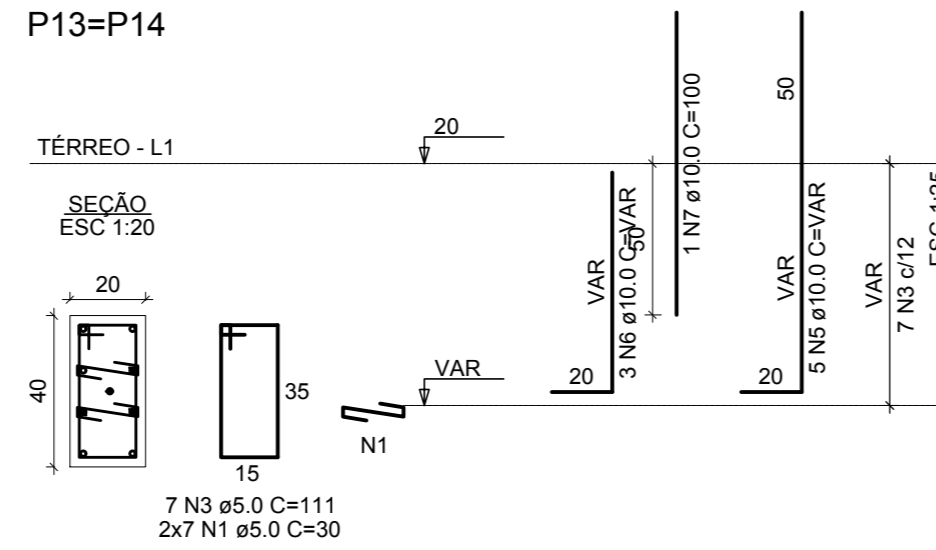
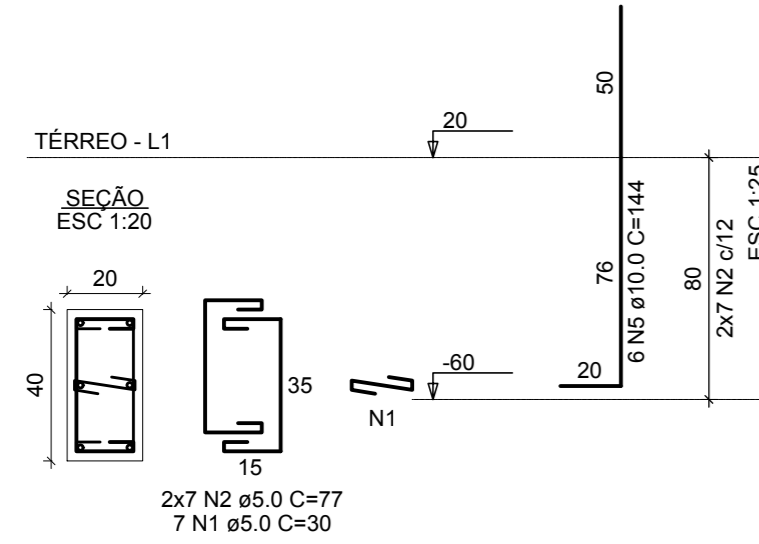


P1=P2=P6=P10=P12=P16=P17=
 =P19=P20=P23=P24=P28=P30=
 =P31=P33=P34=P35



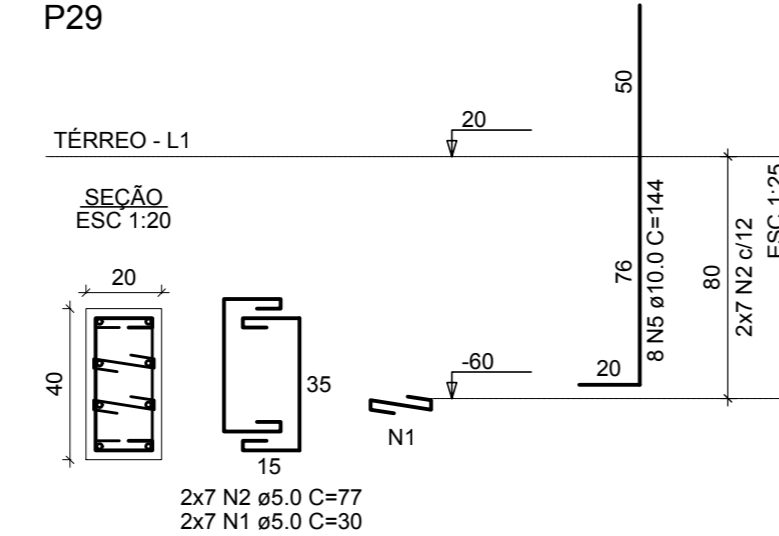
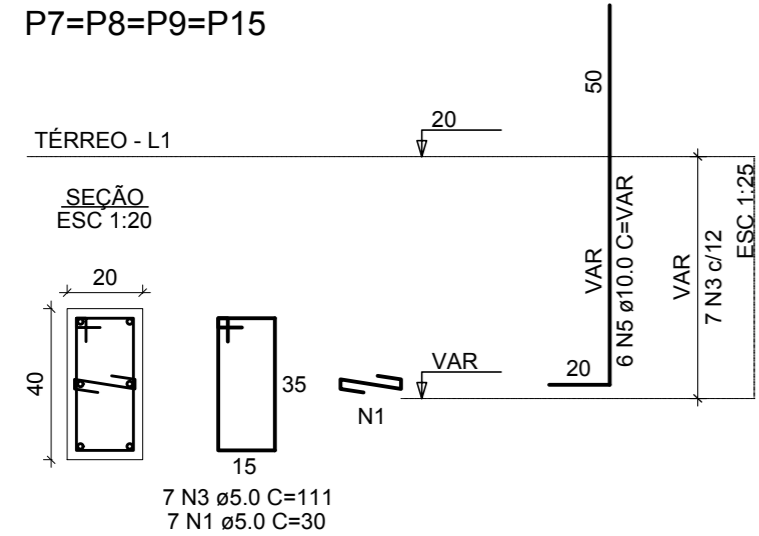
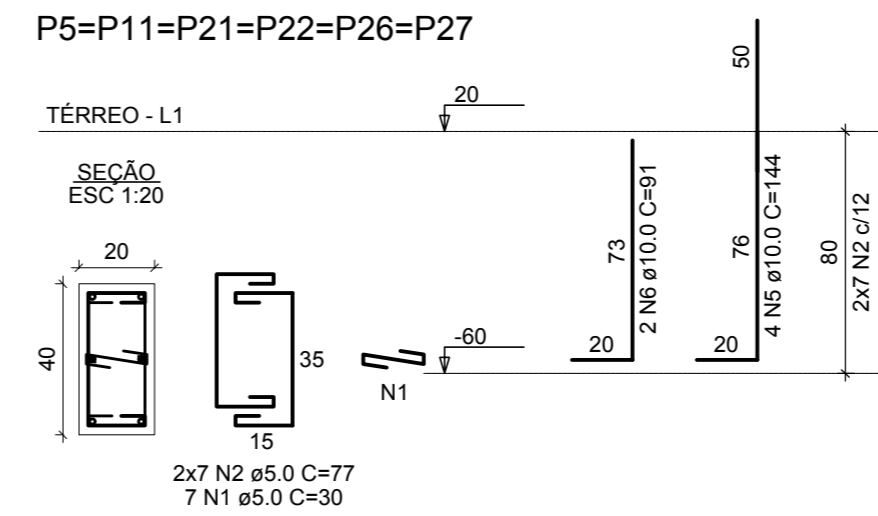
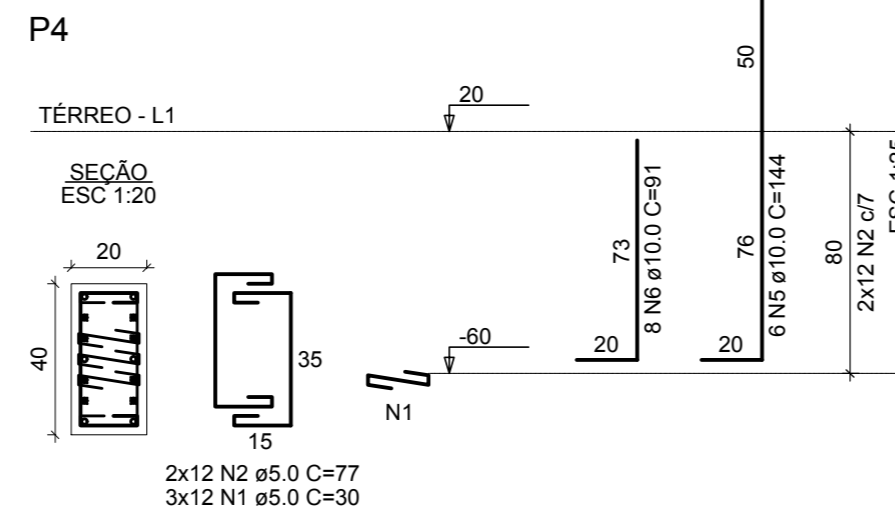
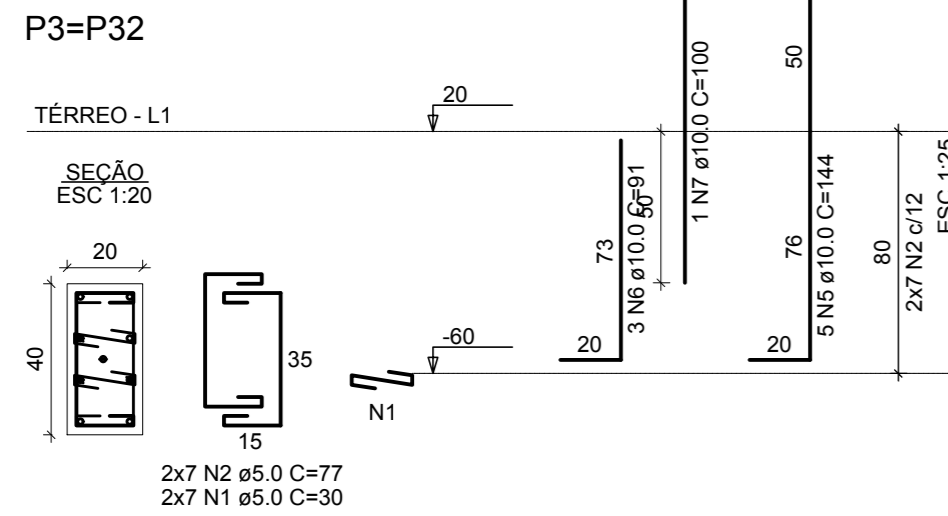
RELAÇÃO DO AÇO

AÇO	N	DIAM (mm)	QUANT	C.UNIT (cm)	C.TOTAL (cm)
CA60	1	5.0	295	30	8850
	2	5.0	412	77	31724
	3	5.0	42	111	4662
	4	5.0	24	30	720
CA50	5	10.0	184	144	26496
	6	10.0	32	91	2912
	7	10.0	4	100	400
	8	12.5	16	153	2448

RESUMO DO AÇO

AÇO	DIAM (mm)	C.TOTAL (m)	PESO + 0% (kg)
CA50	10.0	298.1	183.8
CA60	5.0	459.6	70.8
PESO TOTAL (kg)			
CA50	207.4		
CA60	70.8		

Volume de concreto (C-25) = 2.24 m³
 Área de forma = 33.60 m²



ESTRUTURAL

MUNICÍPIO

ANTÔNIO CARLOS - SC

OBRA
CASA DO AGRICULTOR

CONTEÚDO
PILARES DO TÉRREO - FORMAS E ARMADURAS

PROJETO

Eng.Civil Virginia Maria Wolff

EXECUÇÃO

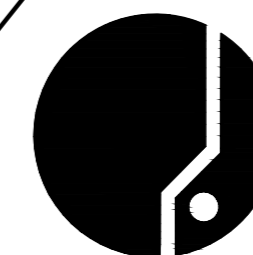
DESENHO
GRANFPOLIS

ESCALA
INDICADAS

DATA
MAI/2019

ÁREA
287,50 m²

PRANCHA
8



ASSOCIAÇÃO DOS MUNICÍPIOS
 DA REGIÃO DA GRANDE FLORIANÓPOLIS
"GRANFPOLIS"
 ASSESSORIA DE ENGENHARIA E ARQUITETURA