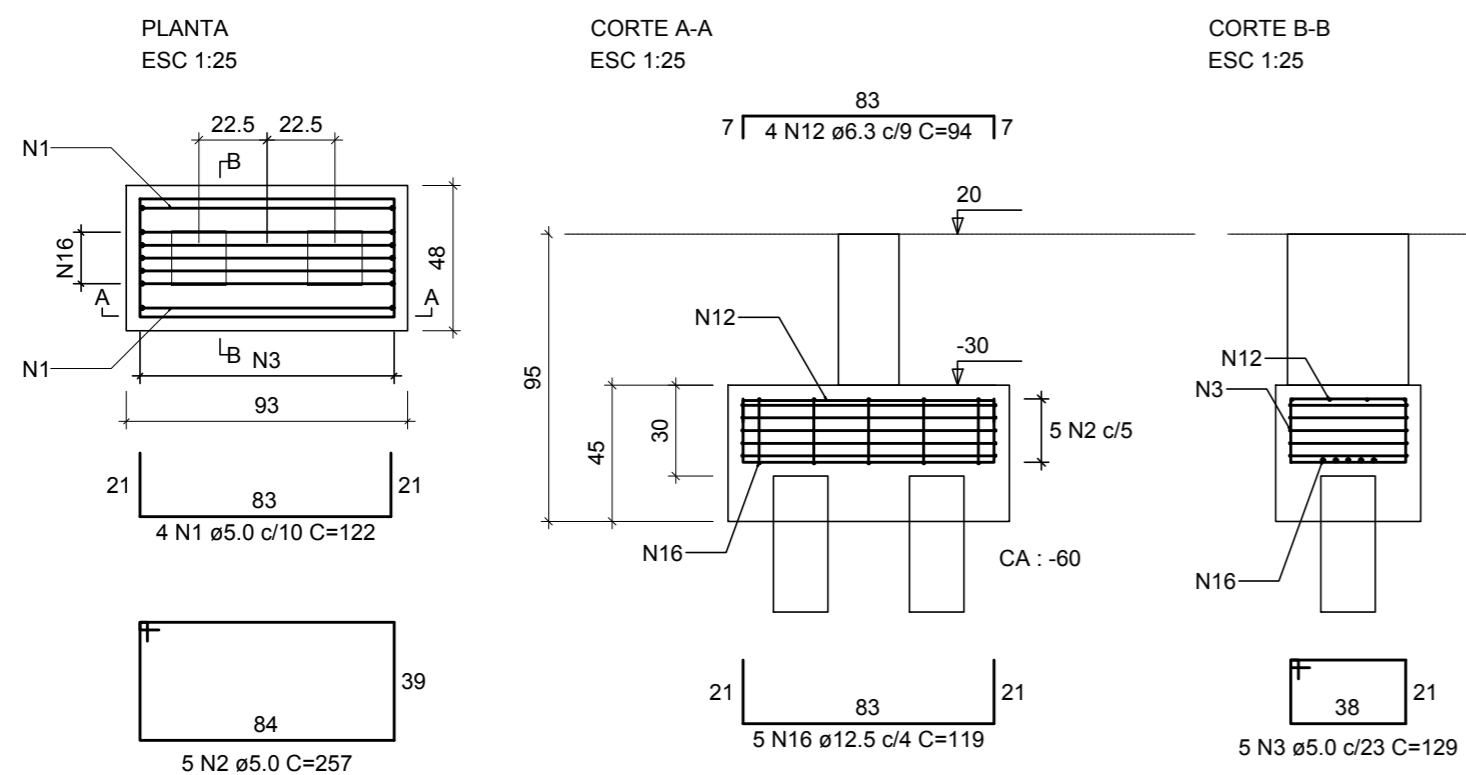
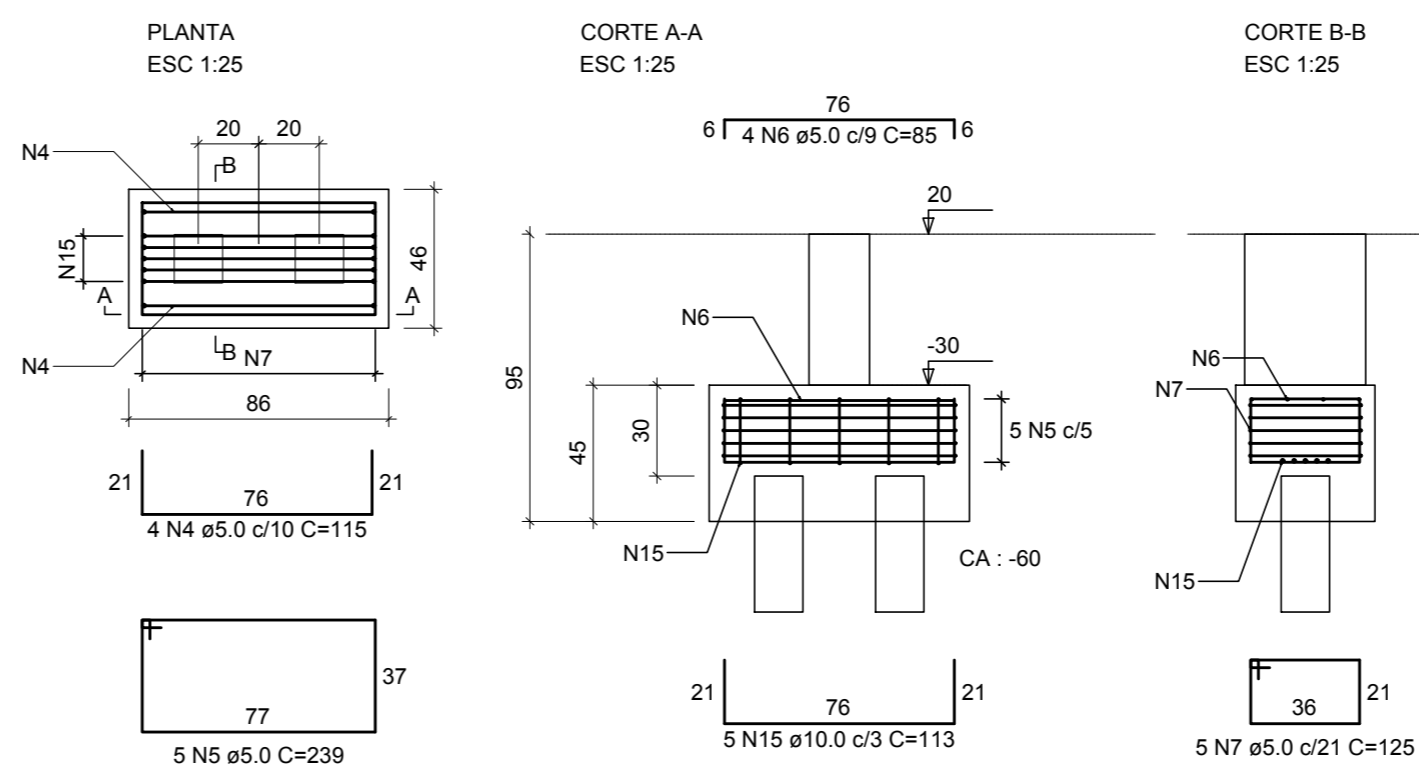


B3=B4=B12=B17=B20=B26  
2x Estaca 18x18



B1=B2=B5=B6=B7=B8=B11=B13=B14=B21=B25=B33  
2x Estaca 16x16



RELAÇÃO DO AÇO

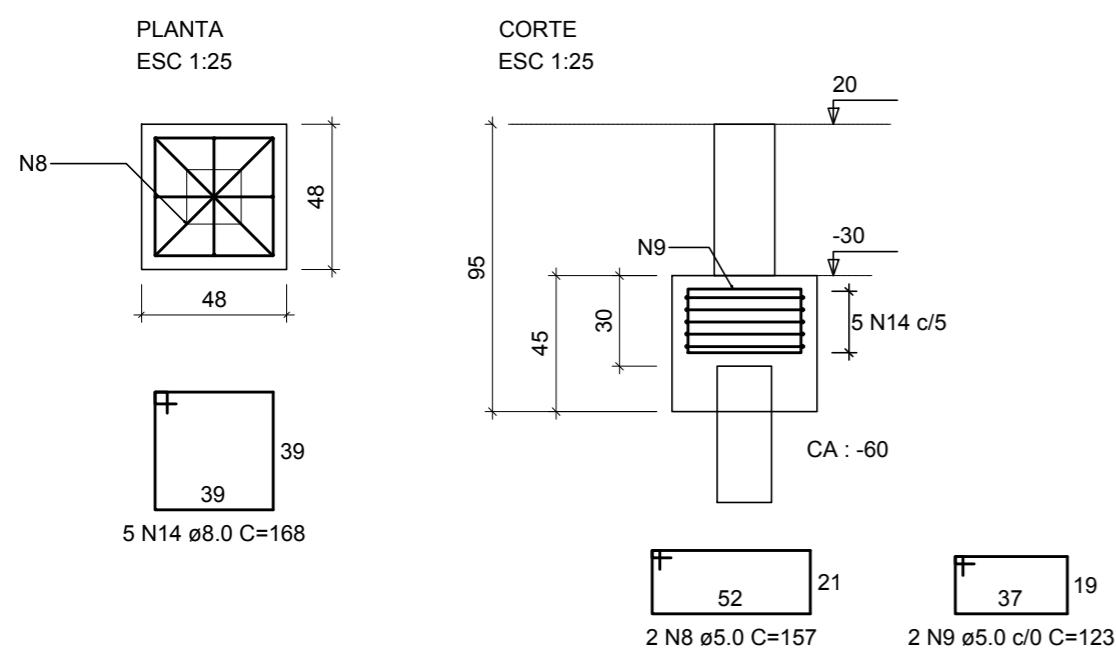
6xB4 14xB34		12xB6		3xB27	
AÇO	N	DIAM (mm)	QUANT	C.UNIT (cm)	C.TOTAL (cm)
CA60	1	5.0	24	122	2928
	2	5.0	30	257	7710
	3	5.0	30	129	3870
	4	5.0	48	115	5520
	5	5.0	60	239	14340
	6	5.0	48	85	4080
	7	5.0	60	125	7500
	8	5.0	6	157	942
	9	5.0	6	123	738
	10	5.0	28	151	4228
	11	5.0	28	119	3332
CA50	12	6.3	24	94	2256
	13	6.3	70	160	11200
	14	8.0	15	168	2520
	15	10.0	60	113	6780
	16	12.5	30	119	3570

RESUMO DO AÇO

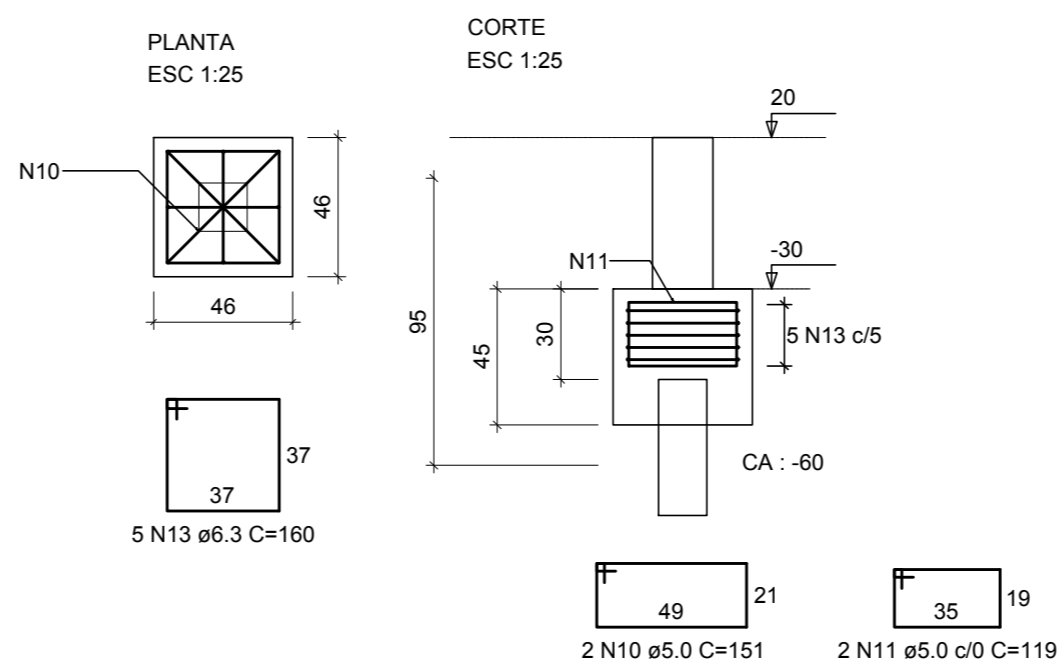
AÇO	DIAM (mm)	C.TOTAL (m)	PESO + 0% (kg)
CA50	6.3	134.6	32.9
	8.0	25.2	9.9
	10.0	67.8	41.8
CA60	12.5	35.7	34.4
	5.0	551.9	85.1
PESO TOTAL (kg)			
CA50		119.1	
CA60		85.1	

Volume de concreto (C-25) = 4.77 m³  
Área de forma = 36.05 m²

B18=B27=B32  
1x Estaca 18x18



B9=B10=B15=B16=B19=B22=B23=B24=B28=B29=B30=B31=B34=B35  
1x Estaca 16x16



# ESTRUTURAL

MUNICÍPIO

ANTÔNIO CARLOS - SC

OBRA  
CASA DO AGRICULTOR

CONTEÚDO  
BLOCOS - FORMAS E ARMADURAS

PROJETO

EXECUÇÃO

Eng.Civil Virginia Maria Wolff

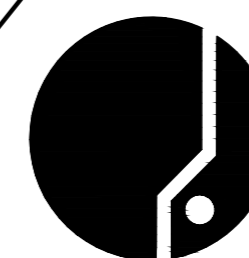
DESENHO  
GRANFPOLIS

ESCALA  
INDICADAS

DATA  
MAI/2019

ÁREA  
287,50 m²

PRANCHA  
7



ASSOCIAÇÃO DOS MUNICÍPIOS  
DA REGIÃO DA GRANDE FLORIANÓPOLIS  
"GRANFPOLIS"  
ASSESSORIA DE ENGENHARIA E ARQUITETURA